



MARIPOSA GOLD PROJECT

July 2026

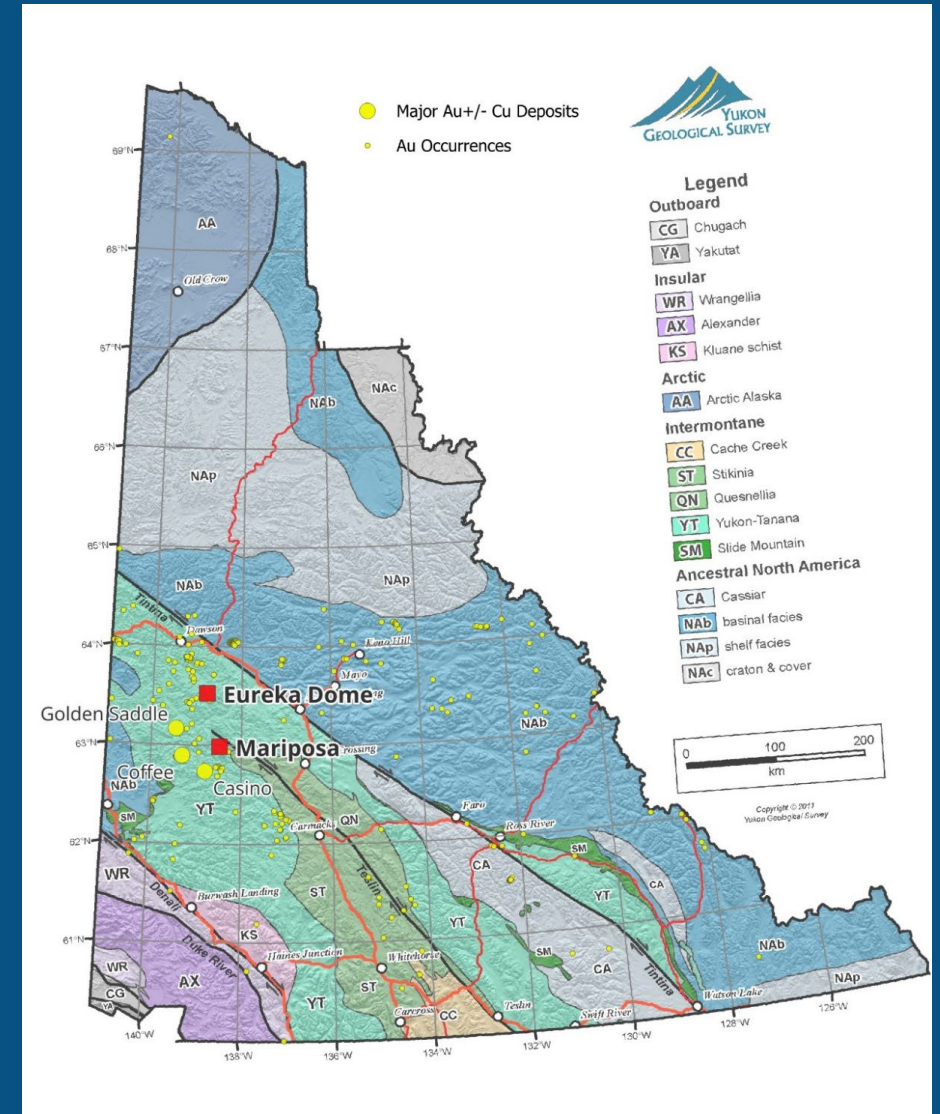
DISCLAIMER

Statements contained in this presentation that are not historical facts may be forward-looking statements within the meaning of the US Private Securities Litigation Reform Act of 1995 and forward looking information under similar Canadian legislation (collectively, "Forward Looking Information"). Forward Looking Information includes, but is not limited to, statements regarding the Company's strategic plans, property search and evaluation plans, estimated levels of mineral reserves, mineral resources and expenditures, success of exploration activities, and acquisition targets and commitments. Forward Looking Information is based on information currently available to the Company and the Company provides no assurance that actual results will meet management's expectations. In certain cases, Forward Looking Information may be identified by such terms as "anticipates", "believes", "could", "estimates", "expects", "may", "shall", "will", or "would", and is based on certain factors and assumptions regarding, among other things, the estimation of mineral resources, the realization of resource estimates, the timing and amount of future exploration and development expenditures, the availability of necessary financing and materials to continue to explore and develop properties, the receipt of necessary regulatory approvals, and assumptions with respect to currency fluctuations, environmental risks, title disputes or claims, and other similar matters. While the Company considers these assumptions to be reasonable based on information currently available to it, they may prove to be incorrect. Forward Looking Information involves known and unknown risks, uncertainties and other factors which may cause the actual results, performance or achievements of the Company to be materially different from any future results, performance or achievements expressed or implied by the Forward Looking Information. Such factors include risks inherent in the exploration and development of mineral deposits, risks relating to variations in mineral resources, grade or recovery rates resulting from current exploration and development activities, risks relating to changes in metal prices and the worldwide demand for and supply of metals, risks related to increased competition in the mining industry generally, risks related to current global financial conditions, uncertainties inherent in the estimation of mineral resources, access and supply risks, reliance on key personnel, operational risks inherent in the conduct of mining activities, risk of delays or increased costs during the development process and relating to the acquisition of licenses and permits, regulatory risks, risks related to disputes concerning property titles and interest, and environmental risks. This list is not exhaustive of the factors that may affect any of the Company's Forward Looking Information. These and other factors should be considered carefully and readers should not place undue reliance on the Company's Forward Looking Information. The Company does not undertake to update any Forward Looking Information or statements that may be made from time to time by the Company or on its behalf, except in accordance with applicable securities laws. Note that mineralization on adjacent properties in similar rocks, and assays based on historical work in surface sampling and drilling, are not representative of the mineralization on the property, and have not been verified and should not be relied upon.

The technical content of this presentation has been prepared by Roger Moss, Ph.D., P.Geo. the company's qualified person.

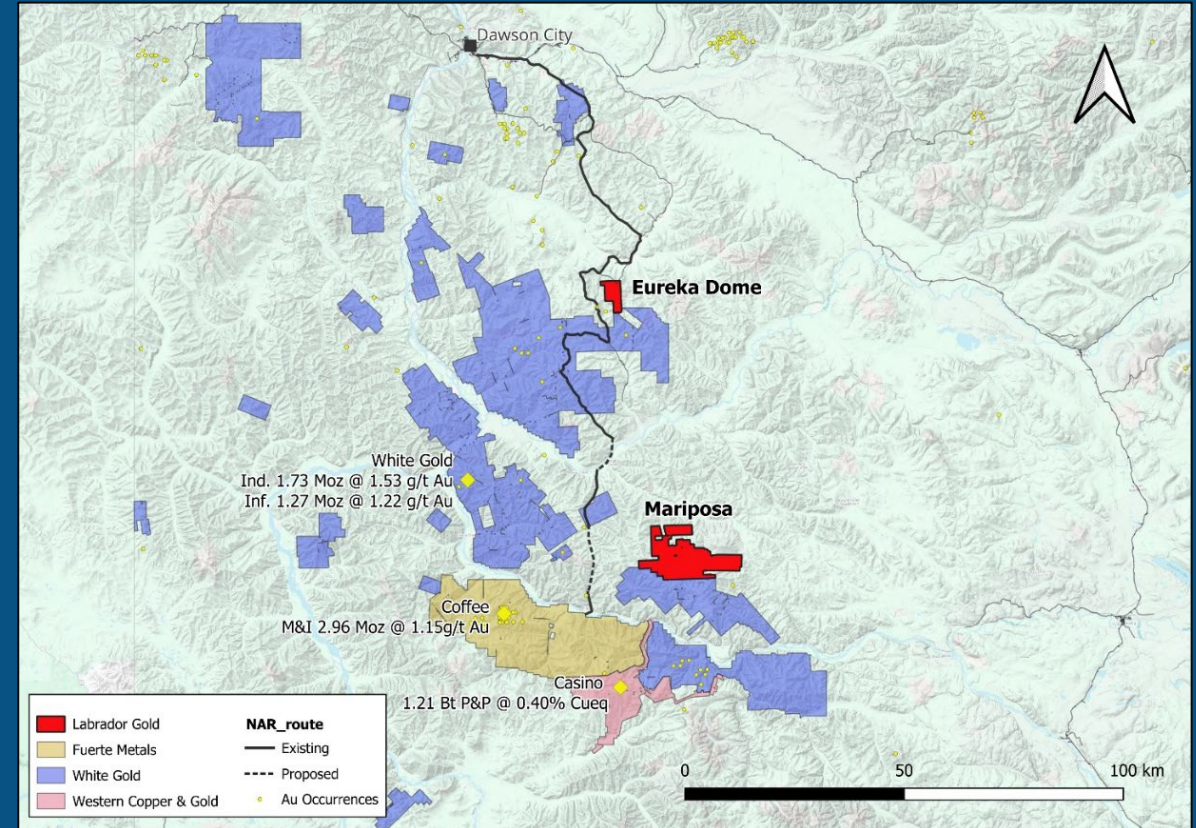
Summary

- ~16,000 ha land package in the heart of the White Gold District
 - Coffee deposit ~44 km SW (3.8 Moz @ 1.15 g/t Au)
 - Golden Saddle deposit ~50 km NNW (2.3 Moz @ 1.78 g/t Au)
- Exploration dataset leveraged to rapidly advance the project with targeted, efficient work programs
- Geology and mineralization style closely mirrors the broader White Gold District, sharing host lithologies, structural controls, and orogenic-style gold mineralization with Coffee and Golden Saddle
- Only 8,636m of shallow drilling to date (0.54m per ha)
- 73,000 oz of placer gold production (1978-2025) from Scroggie Creek - strong bedrock gold endowment yet to be fully defined
- Favourable mining jurisdiction:
 - Considerable exploration activity in White Gold district and Yukon generally
 - improved policy outlook following the pro-development Yukon Party's election



Location & Access

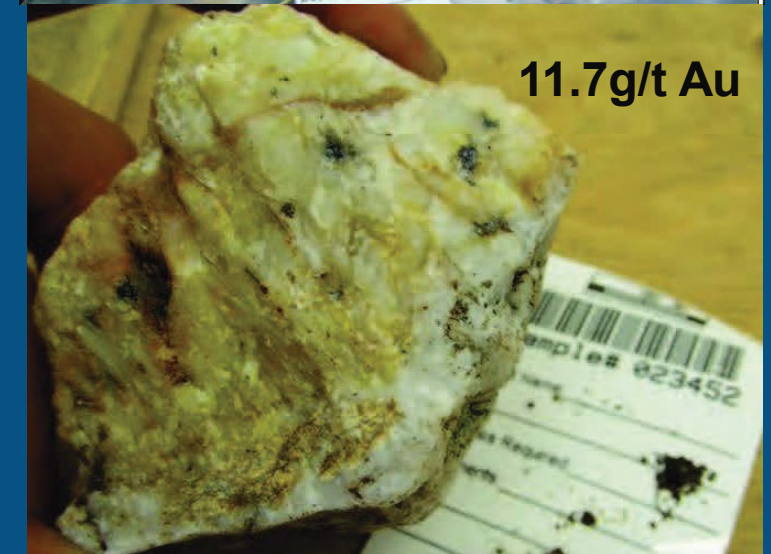
- Located 120 km south of Dawson City, Yukon
- 750 m airstrip enables fixed-wing flights from Dawson City or Whitehorse
- Summer ATV access from Pelly Farm (~70 km)
- Internal access via existing placer mining roads along Scroggie and Mariposa Creeks; remote areas by helicopter
- Talamore Mining's proposed 214 km Northern Access Route (NAR) from Dawson City to the Coffee Gold Project would pass within ~15 km of the property



Gold Mineralization in White Gold District

Mariposa shares characteristics of gold mineralization elsewhere in the White Gold District including:

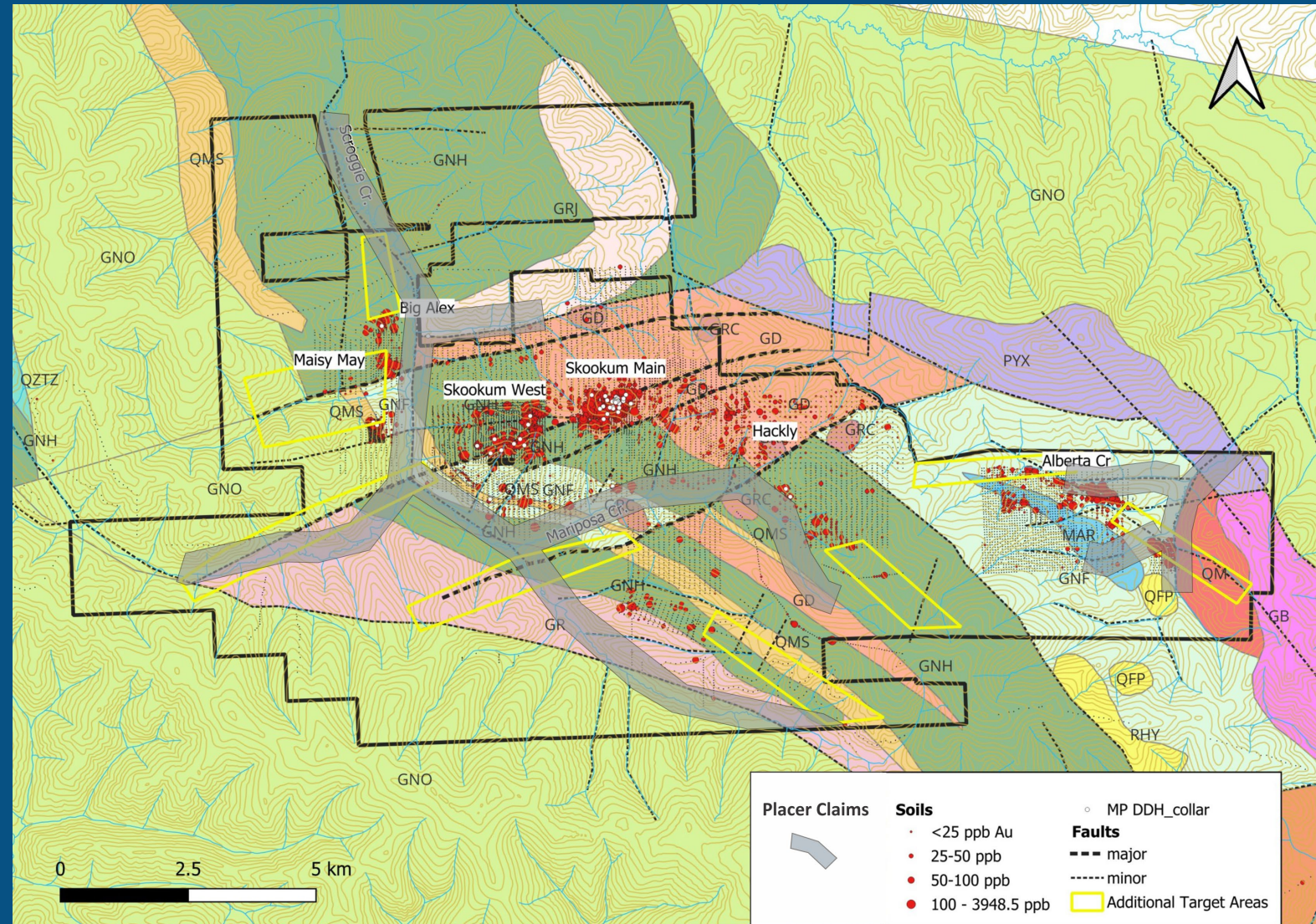
- Similar age (~155Ma) to Golden Saddle mineralization and other prospects in the district suggests widespread orogenic gold event
- East-northeasterly fault system with small-displacement - East-northeast mineralized zones
- Association with quartz veins, stockwork and breccia zones, pyrite veinlets, cubic pyrite and visible gold
- Felsic orthogneiss (meta-intrusive) dominant host rock
- Alteration assemblage sericite, silicification, carbonate, potassium feldspar and hematite
- Associated pathfinders including bismuth, tellurium, molybdenum, mercury, silver, antimony, lead \pm copper, \pm arsenic



Hackly quartz breccia with molybdenite

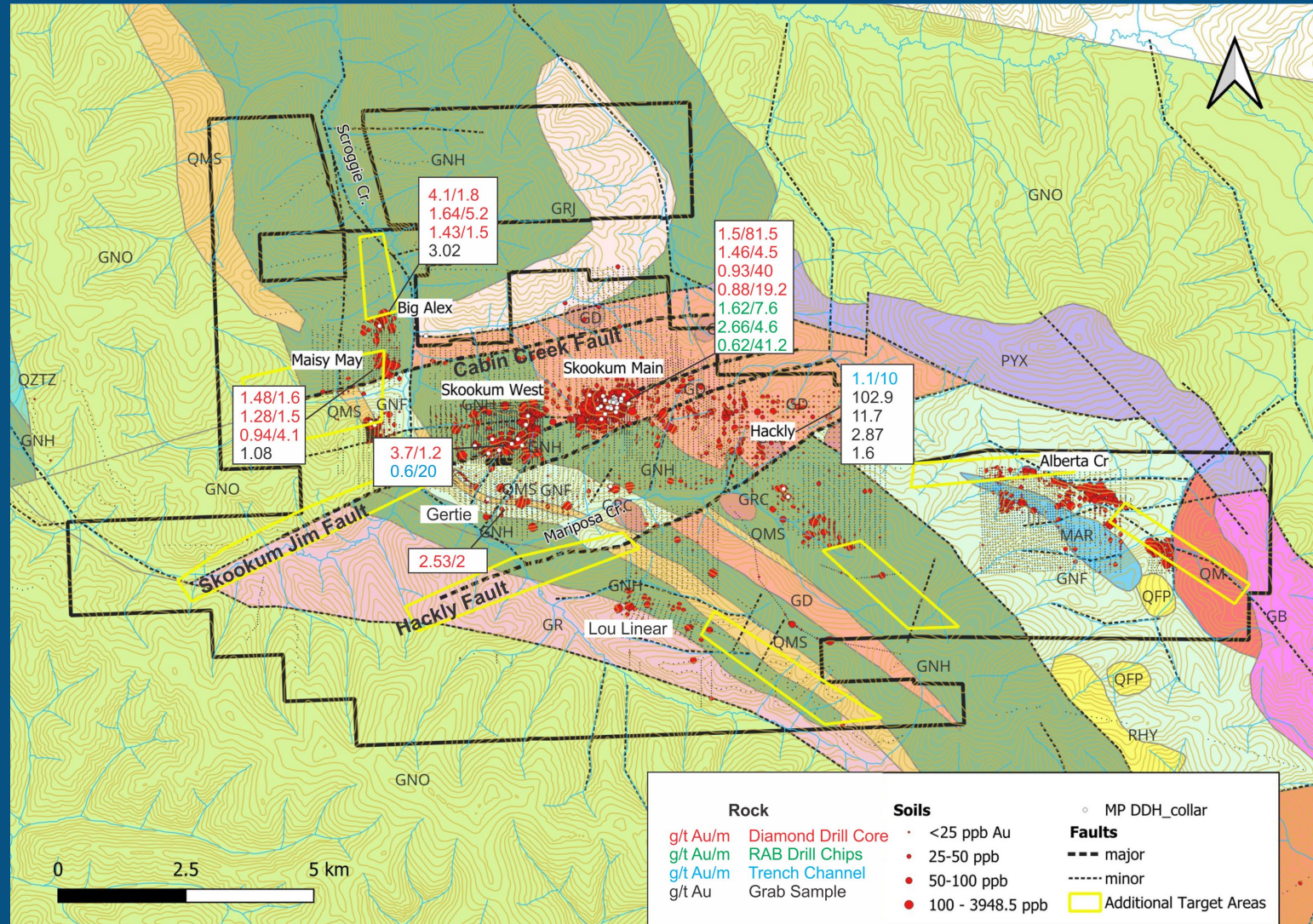
Placer Mining

- Placer activity dates back to 1898 when gold was first discovered in Scroggie and Mariposa Creeks
- Both creeks are still actively mined with 1,136oz reported for Scroggie Creek in 2025
- 73,000 oz of placer gold production (1978-2025) from Scroggie Creek
- Pristine gold nuggets found in Mariposa Creek believed to be close to bedrock source



Gold Occurrences

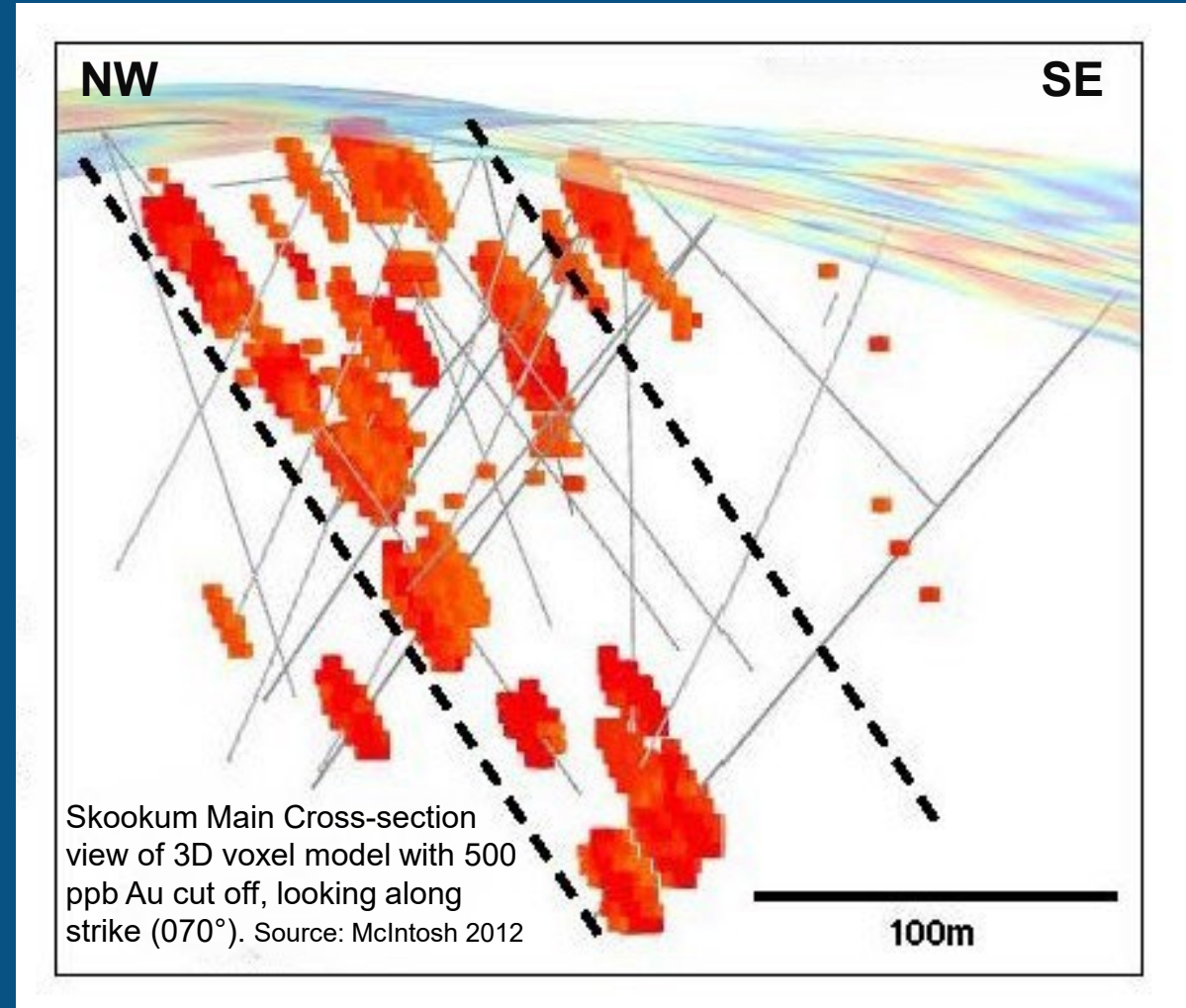
- Eight significant gold occurrences identified by soil sampling to date
- Drilling and trenching demonstrate widespread gold mineralization
- Most work focussed along the 3.5km Skookum Jim trend
- Southern portion of the property sparsely sampled despite good gold in soil anomalies at Alberta Creek and Lou Linear
- Geochemistry suggests two possible mineralizing events:
 - Early Cu-Ag-Pb-Zn (Bi-As±Mo ±Ag) -possibly intrusion related e.g. Maisy May-Gertie
 - Later Au-Mo-Hg-Sb e.g Skookam Main



Drilling and Trenching

Trench #	Length (m)	Au (g/t)	Zone
TR10-SJ-02	150	0.49	Skookum Main
including	30	1.25	
SWTR12-11	40	1.4	Skookum West
including	20	1.83	
SWTR12-03	10	2.45	Skookum West
SWTR12-08	10	1.49	Skookum West
SWTR12-09	20	0.9	Skookum West
MPTR16-01	45	0.49	Hackly Breccia
including	10	1.1	
MPTR16-04	20	0.6	Skookum West
including	5	1.64	
12SJ-12	10	1.5	Skookum West

Drill Hole #	From (m)	To (m)	Length (m)	Au (g/t)
DDH-11MP-01	24.5	106	81.5	1.51
including	29.1	68	38.9	2.44
DDH-11MP-05	3.1	22.9	19.8	1.13
DDH-11MP-06	3.7	49	45.3	0.63
DDH-11MP-08	182.7	222.7	40	0.93
DDH12MP-10	38.9	79.5	40.6	0.72
including	64.8	79.5	14.7	1.4
DDH-12MP-3A	204	206.8	2.8	4.76
15MPR-01	27.43	35.05	7.62	1.62
including	27.43	32	4.57	2.28
15MPR-07	30.48	59.44	28.96	0.84
including	30.48	35.05	4.57	2.66
15MPR-11	0	41.15	41.15	0.619
including	12.19	22.86	10.67	1.07



Top Targets

Intersecting magnetic lineaments

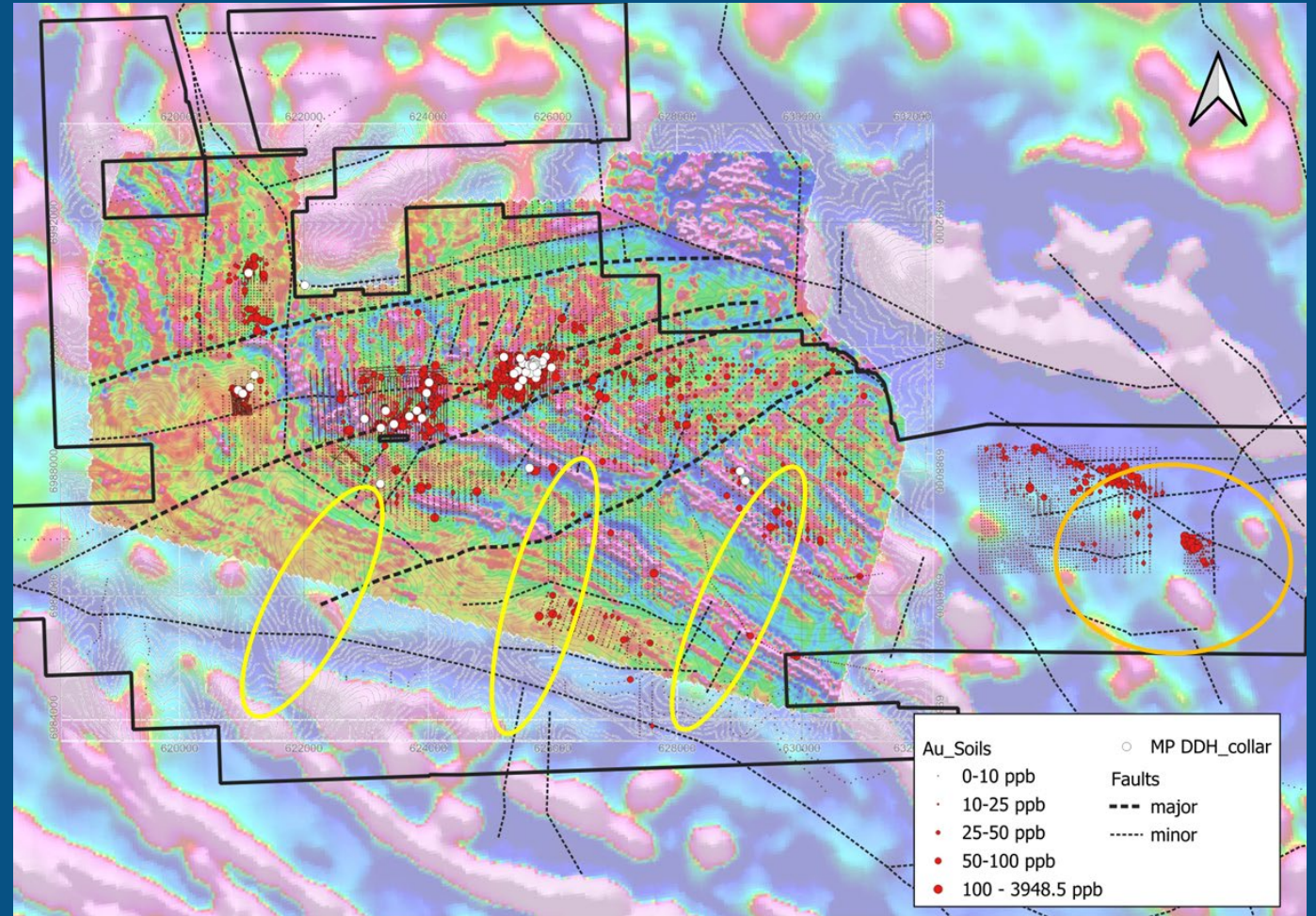
- Skookum Main & West lie at intersecting ENE & NE trending mag lineaments
- Similar targets with anomalous soils, present in southern half of property (yellow ellipses)

Untested soil anomalies

- Alberta Creek open soil anomaly needs additional sampling to the east and south (orange ellipse)

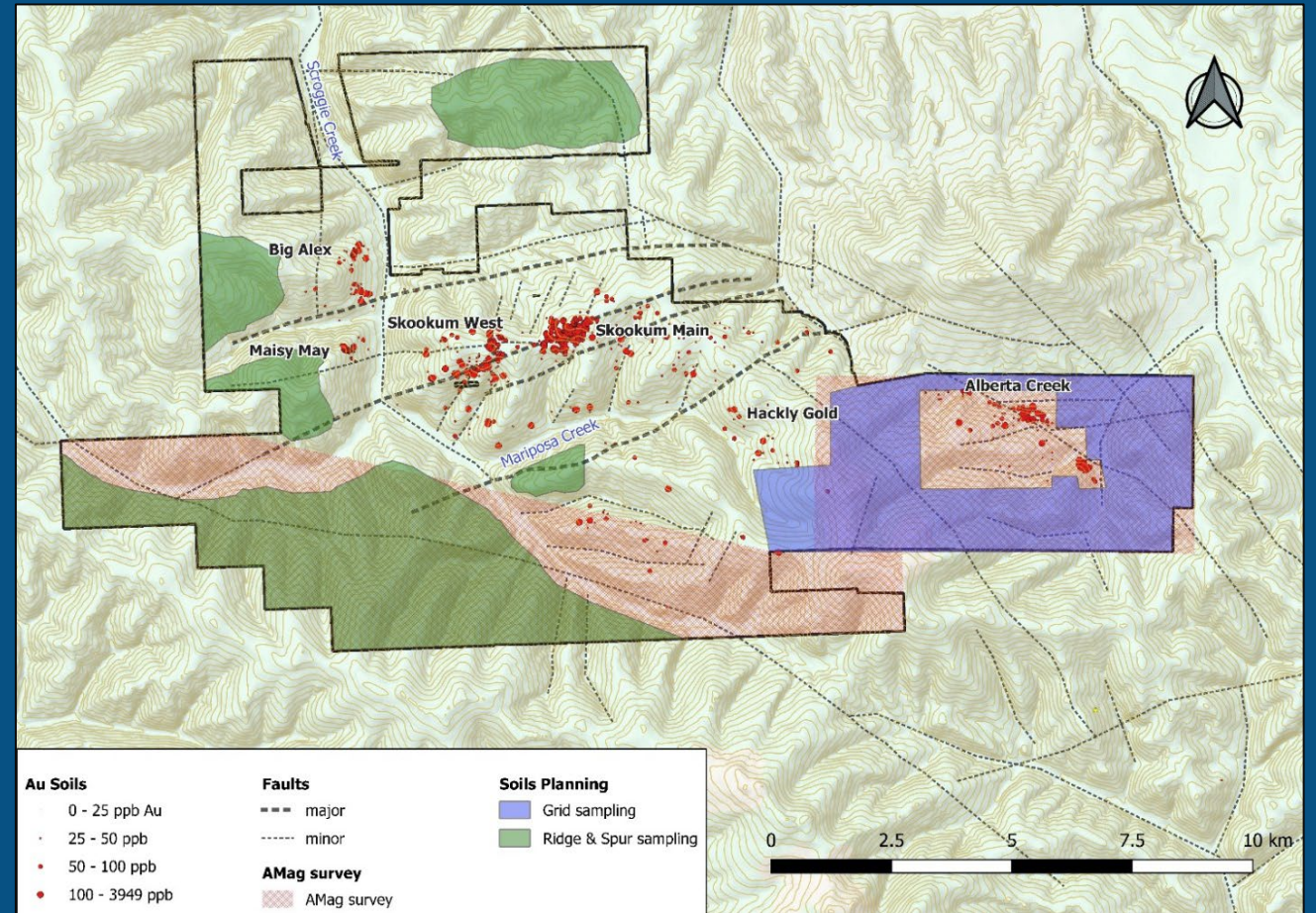
Poorly tested soil anomalies

- Open Ended Maisy May and Big Alex anomalies require extensions to fully define extent. Limited drilling (5 holes 750m) returned bedrock mineralization



2026 Program

- Lidar survey covering the property
 - Aids in recognizing subtle structures and areas of potential outcrop
- Airborne magnetics and radiometrics
 - Completes high-definition coverage
- Grid soil sampling to extend Alberta Creek and Hackly anomalies
- Ridge and spur sampling in southwest of property to extend sampling into untested area





CONTACT US



Roger Moss, President and CEO



Phone: +1-416-704-8291



E-mail: rmoss@labradorgold.com



Website: www.labradorgold.com

X: @LabGoldCorp

TSX-V: LAB

FNR: 2N6