



A GOLDEN OPPORTUNITY

CORPORATE PRESENTATION
Q2 2026

TSX-V: LAB FNR: 2N6

DISCLAIMER

Statements contained in this presentation that are not historical facts may be forward-looking statements within the meaning of the US Private Securities Litigation Reform Act of 1995 and forward looking information under similar Canadian legislation (collectively, "Forward Looking Information"). Forward Looking Information includes, but is not limited to, statements regarding the Company's strategic plans, property search and evaluation plans, estimated levels of mineral reserves, mineral resources and expenditures, success of exploration activities, and acquisition targets and commitments. Forward Looking Information is based on information currently available to the Company and the Company provides no assurance that actual results will meet management's expectations. In certain cases, Forward Looking Information may be identified by such terms as "anticipates", "believes", "could", "estimates", "expects", "may", "shall", "will", or "would", and is based on certain factors and assumptions regarding, among other things, the estimation of mineral resources, the realization of resource estimates, the timing and amount of future exploration and development expenditures, the availability of necessary financing and materials to continue to explore and develop properties, the receipt of necessary regulatory approvals, and assumptions with respect to currency fluctuations, environmental risks, title disputes or claims, and other similar matters. While the Company considers these assumptions to be reasonable based on information currently available to it, they may prove to be incorrect. Forward Looking Information involves known and unknown risks, uncertainties and other factors which may cause the actual results, performance or achievements of the Company to be materially different from any future results, performance or achievements expressed or implied by the Forward Looking Information. Such factors include risks inherent in the exploration and development of mineral deposits, risks relating to variations in mineral resources, grade or recovery rates resulting from current exploration and development activities, risks relating to changes in metal prices and the worldwide demand for and supply of metals, risks related to increased competition in the mining industry generally, risks related to current global financial conditions, uncertainties inherent in the estimation of mineral resources, access and supply risks, reliance on key personnel, operational risks inherent in the conduct of mining activities, risk of delays or increased costs during the development process and relating to the acquisition of licenses and permits, regulatory risks, risks related to disputes concerning property titles and interest, and environmental risks. This list is not exhaustive of the factors that may affect any of the Company's Forward Looking Information. These and other factors should be considered carefully and readers should not place undue reliance on the Company's Forward Looking Information. The Company does not undertake to update any Forward Looking Information or statements that may be made from time to time by the Company or on its behalf, except in accordance with applicable securities laws. Note that mineralization on adjacent properties in similar rocks, and assays based on historical work in surface sampling and drilling, are not representative of the mineralization on the property, and have not been verified and should not be relied upon.

The technical content of this presentation has been prepared by Roger Moss, Ph.D., P.Geo. the company's qualified person.

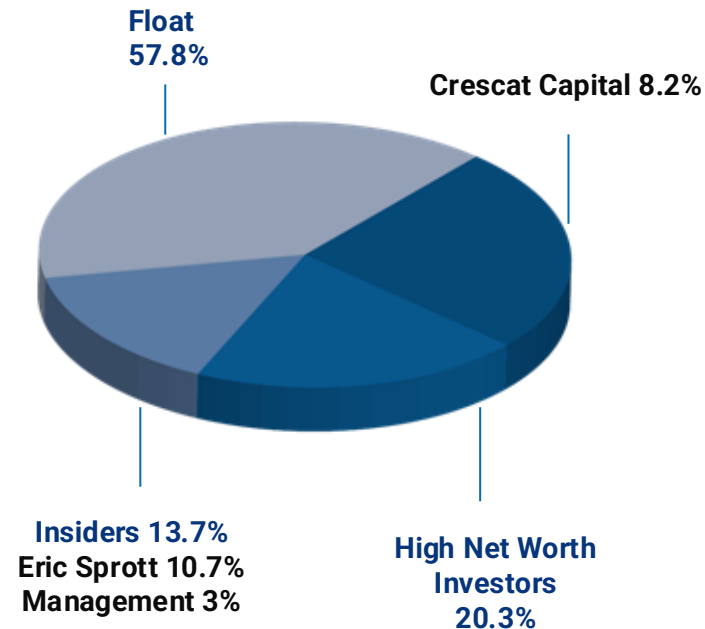
WHY LABRADOR GOLD?

- 100% owned district scale Hopedale project with numerous significant gold and critical metals occurrences
- 80% owned district scale Watson Project in NW Ontario with gold, copper and nickel potential
- Politically stable jurisdictions supportive of mineral exploration
- Experienced exploration team with success in finding and advancing gold deposits
- Approximately \$15.9M cash as at December 31, 2025



SHARE STRUCTURE

Ticker(s)	TSX-V: LAB FSE: 2N6 OTCQB: NKOSF
Share Price – April 2, 2026	C\$0.07
Issued and Outstanding Shares	170.0M
Options	8.4M
Fully Diluted	178.4M
Market Capitalization	~\$11.9 million
Cash – December 31, 2025	~\$15.9 million
Insider Ownership	13.6%
Eric Sprott	10.7%
Management	3%



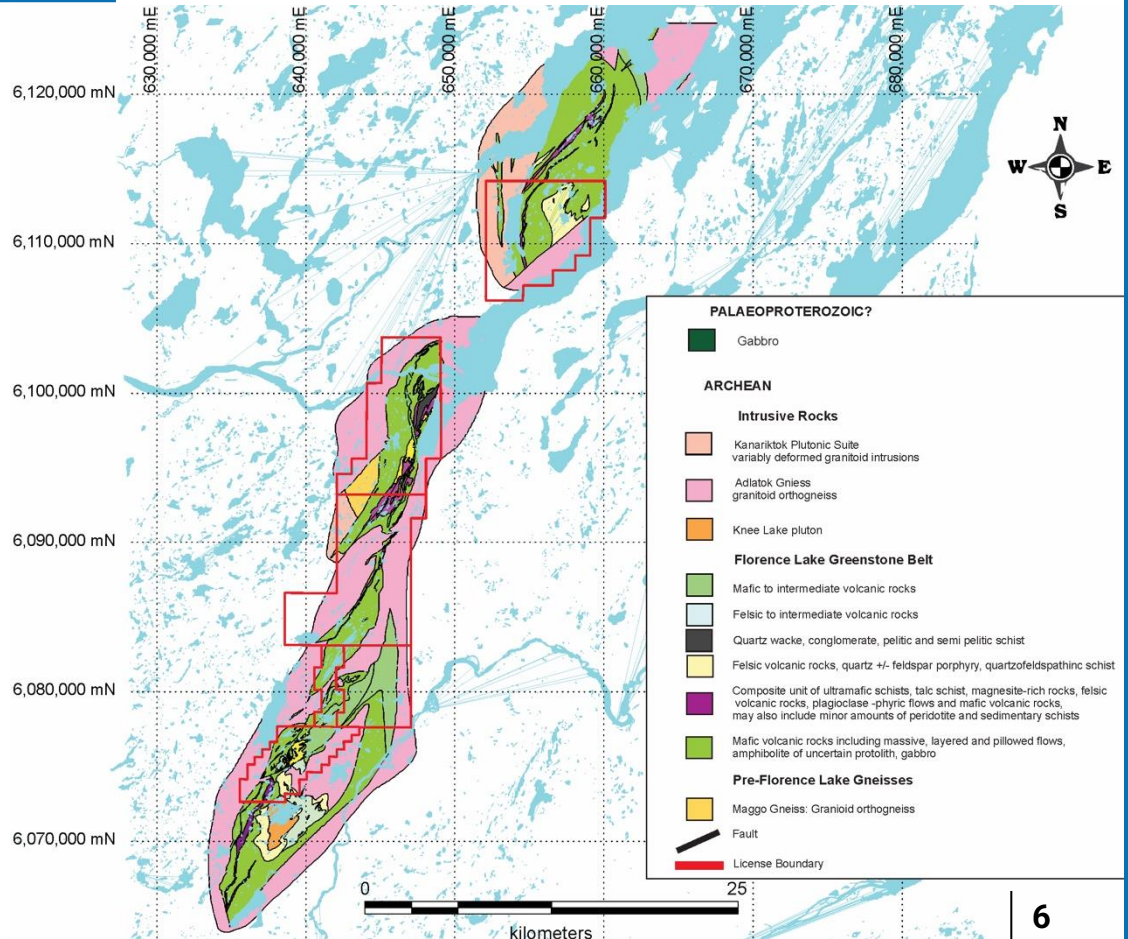
HOPEDALE PROJECT

- 100% owned district scale property - covers most of Florence Lake Archean greenstone belt
- 5 years of exploration has outlined multiple trends of precious & base metal targets including 12 significant occurrences
- East end of property on Ugjuktok Bay tidewater 30km southwest of Hopedale Community
- Daily air service from Happy Valley-Goose Bay to Hopedale Community



FLORENCE LAKE GREENSTONE BELT

- Six licenses (785 claims) cover 43 kilometres of the Florence Lake Greenstone Belt
- Significantly underexplored district compared to greenstone belts elsewhere in the world
- Potential for copper, nickel and zinc in addition to gold
- Greenstone Belts worldwide known to be prolific hosts of gold





GREENSTONE HOSTED GOLD CAMPS

Comparison of footprint of major Greenstone Hosted Gold Camps of Ontario and the Florence Lake Greenstone Belt (80% controlled by Labrador Gold Corp.)



T
70Moz



RL
27Moz



KL
25Moz



LL
14.5Moz



FL
?Moz

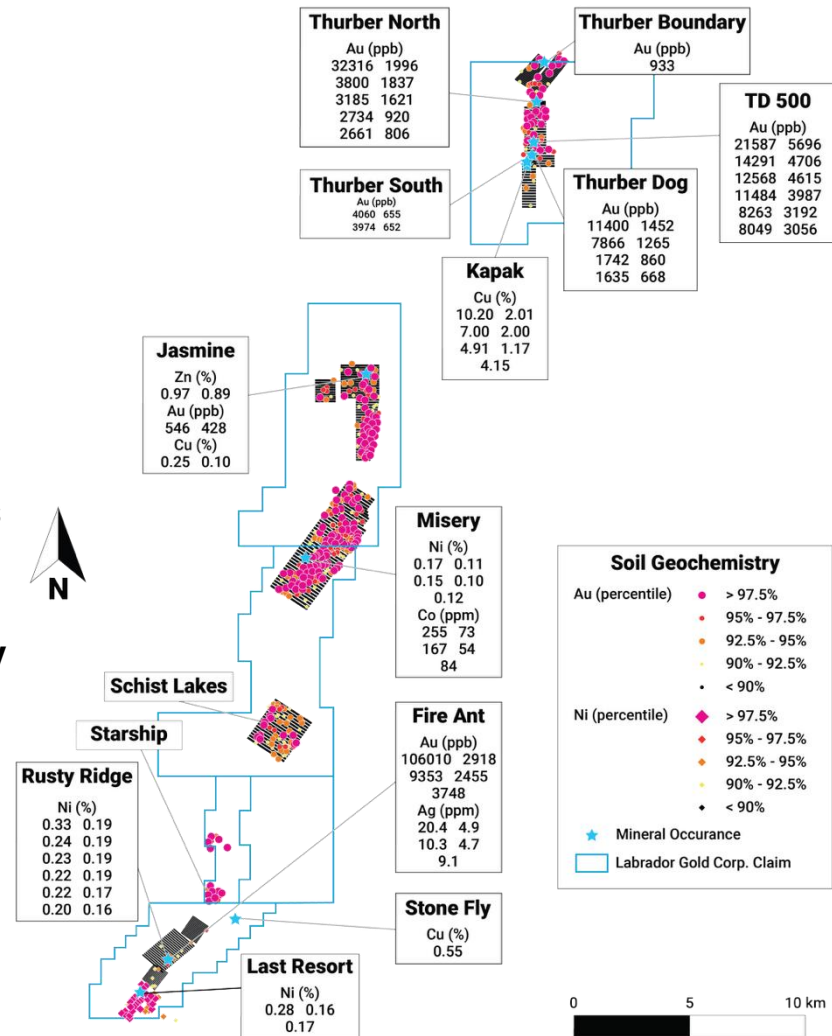
60km

T Timmins; RL Red Lake; KL Kirkland Lake, LL Larder Lake

Sources: Poulson, H. 2012; Durocher, 1983; Ermanovics, 1993.

Twelve significant occurrences now identified on the Hopedale project reflecting multiple mineralization styles including:

- Orogenic gold – Five occurrences on Thurber License extending over 3 kilometres + Fire Ant occurrence at Rusty Ridge
- Magmatic Ni sulphide – **Rusty Ridge, Misery & Last Resort**
- Copper-silver vein - **Kapaak**
- Zn-rich volcanogenic massive sulphide - **Jasmine**



THURBER GOLD TREND

3km strike length of gold mineralization in rock and soil with 1.5km expansion potential to Thurber Boundary

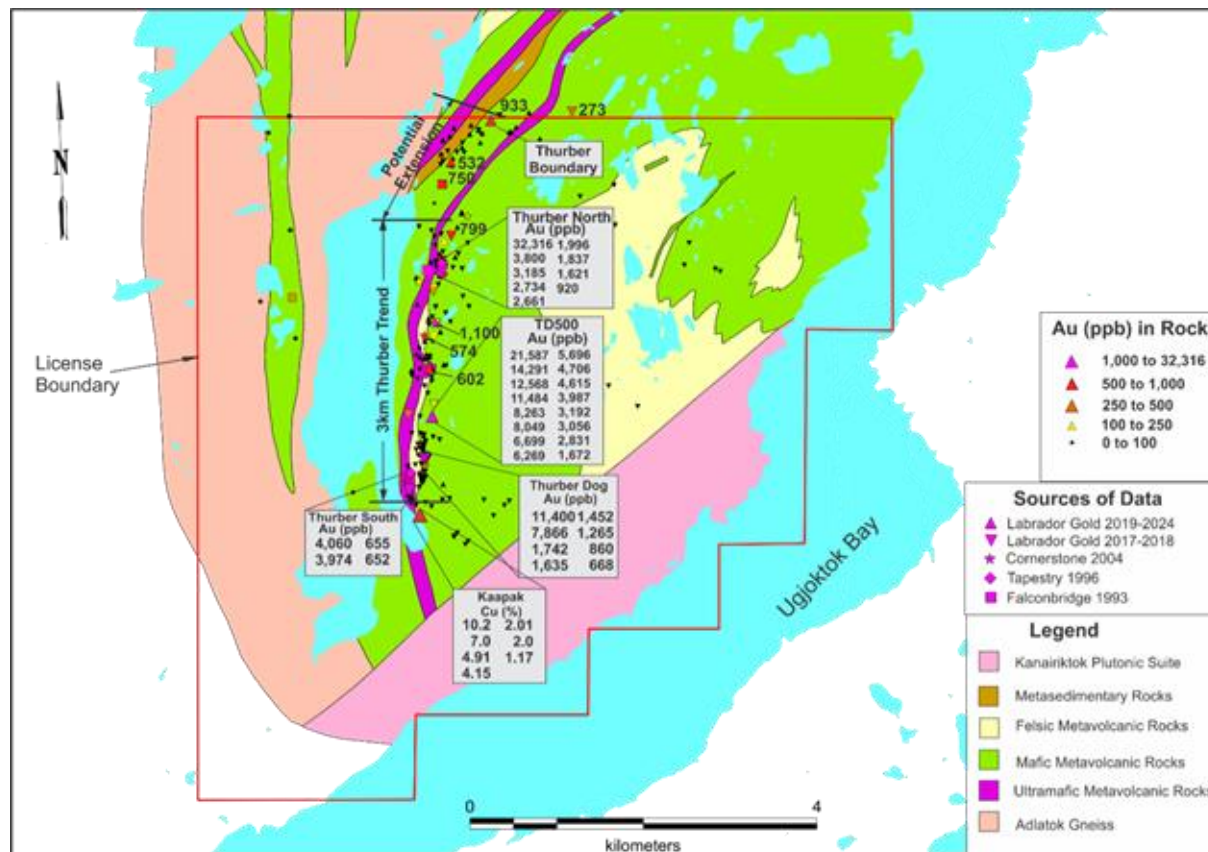
4 significant gold occurrences

- Thurber North up to 32 g/t Au
- TD500 up to 21.59 g/t Au
- Thurber Dog up to 11.4 g/t Au
- Thurber South up to 4.1 g/t Au

Significant copper- silver occurrence at Kapaak

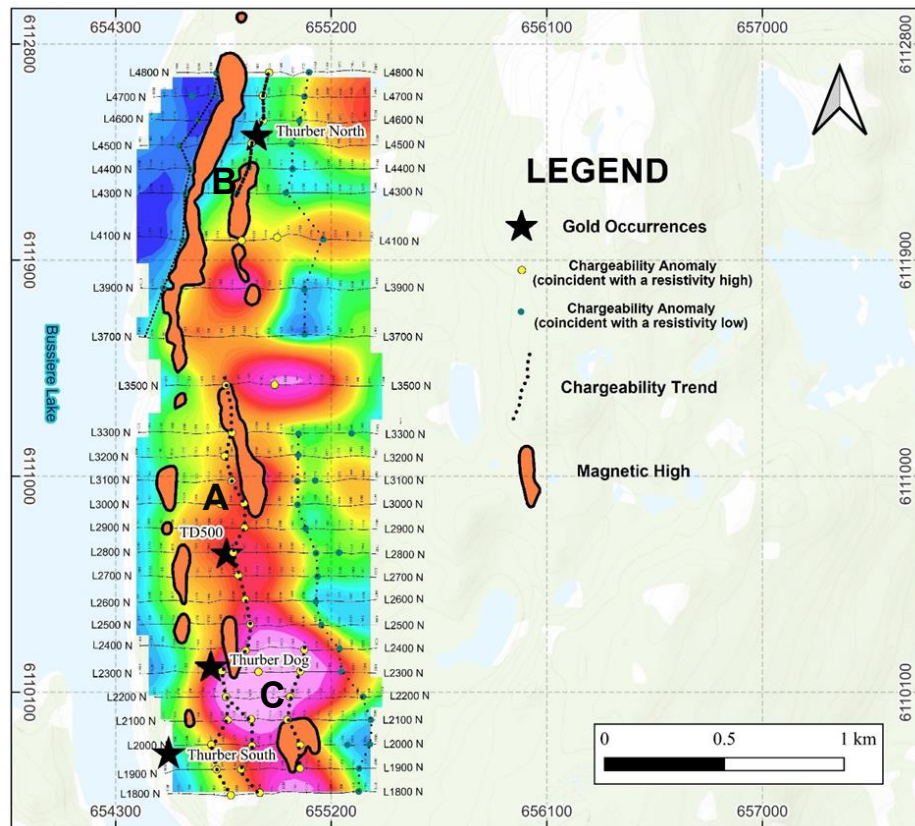
- Up to 10.2% Cu
- Up to 9.2 g/t Ag

Similar rock types and style of alteration as Kirkland Lake - Larder Lake Gold camps in the Abitibi Greenstone Belt



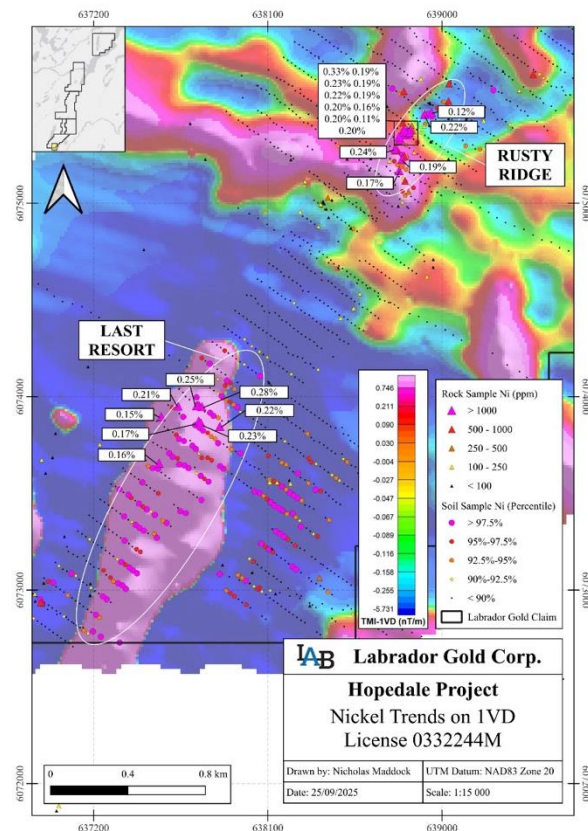
THURBER GOLD TREND - IP/Resistivity

- N-S chargeability trend associated with high resistivity coincides with Thurber Dog and T500 gold occurrences - **A**
- 500m NE chargeability trend coincides with Thurber North showing - **B**
- 500m N to NE chargeability trend associated with high resistivity occurs in the southeast part of the grid - **C**



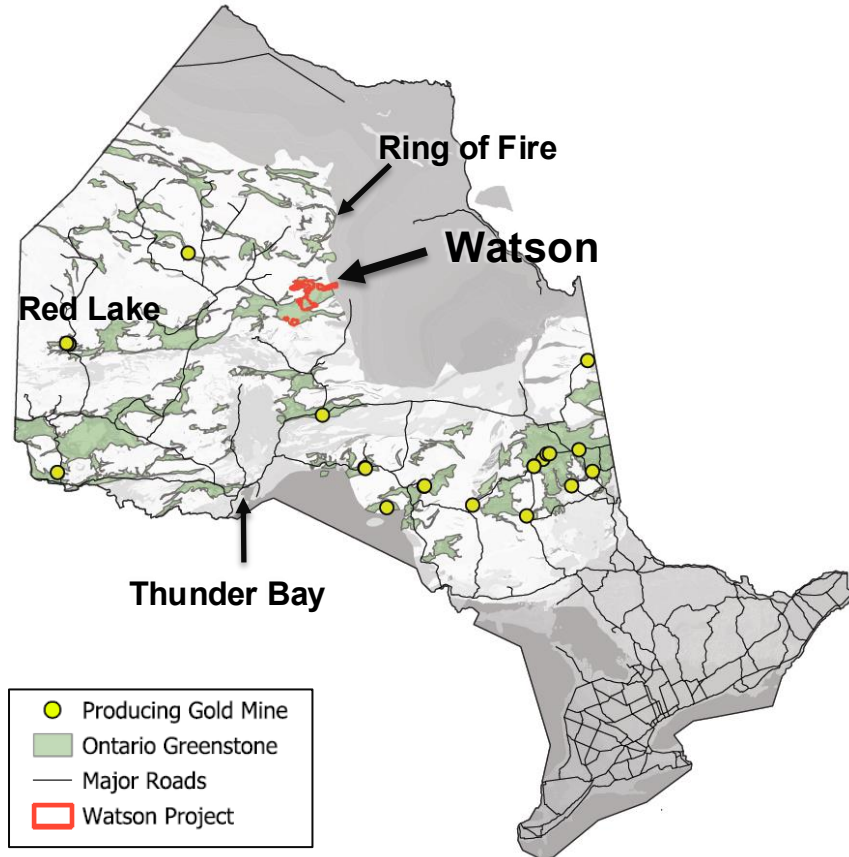
RUSTY RIDGE/LAST RESORT-NICKEL

- Rusty Ridge: anomalous Ni in rock and soil samples associated with carbonate altered ultramafic sills delineated over 550m strike length
- Last Resort: anomalous Ni in soil and rock samples over 1.6km hosted by altered ultramafic peridotite coincident with a significant magnetic high



WATSON PROJECT

- **127,100ha** staked in late 2025_ – largest landholding in Fort Hope Greenstone Belt
- 100% owned by Elementary Minerals a private company Owned 80% by LabGold and 20% by Nemo Resources Group
- **No underlying royalties**
- Located in the eastern Uchi Subprovince which also hosts the prolific Red Lake camp (28Moz Au historic production + 11Moz M&I resources) and Pickle Lake camp (3Moz historic production)
- **Limited historic exploration** at Watson focused on base metals. No concerted effort to explore for gold, despite the recognized potential of the Fort Hope Greenstone Belt
- Abundant folded banded iron formation with structural overprinting = **gold target-rich environment**

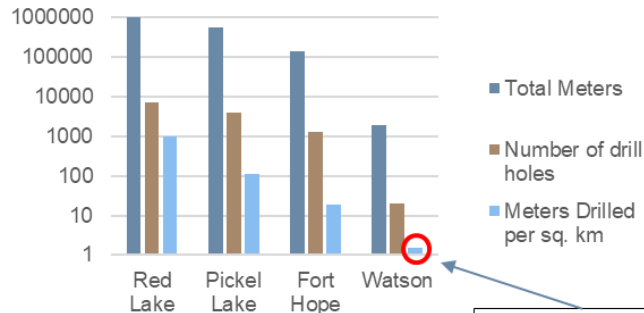


EXPLORING THE WORLD-CLASS UCHI SUBPROVINCE

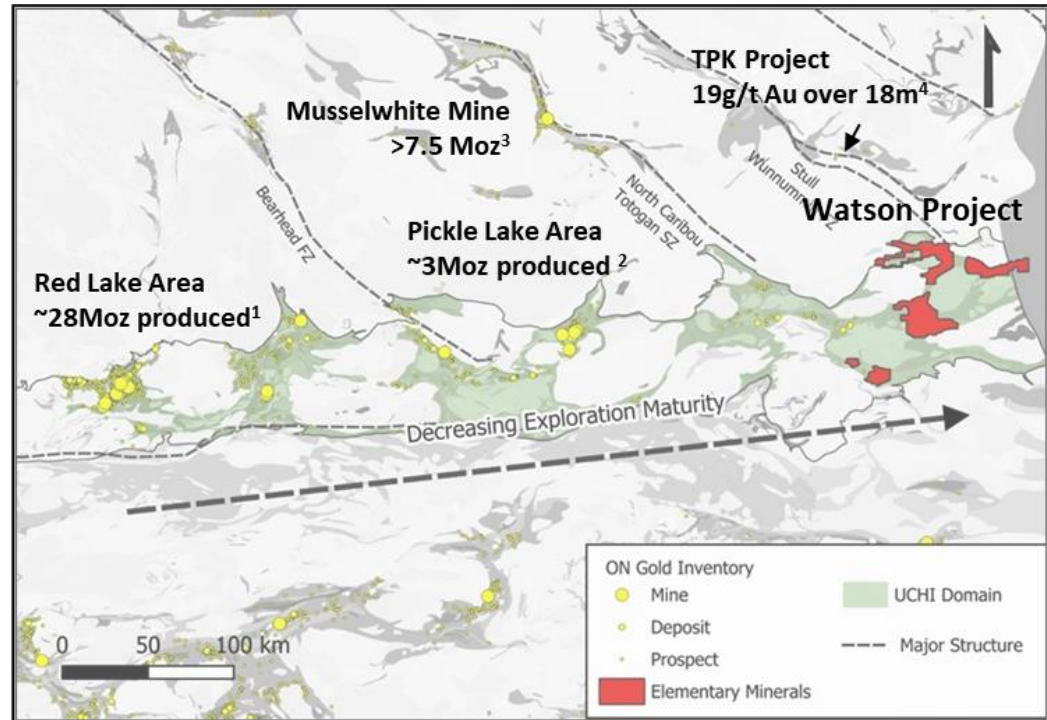
Why the Uchi?

- Proven endowment and continued discovery potential
- Trend of decreasing exploration maturity towards the east, coupled with highly prospective greenstone belt = **massive opportunity**

Exploration Maturity in the Uchi



1.5m drilled per sq. km

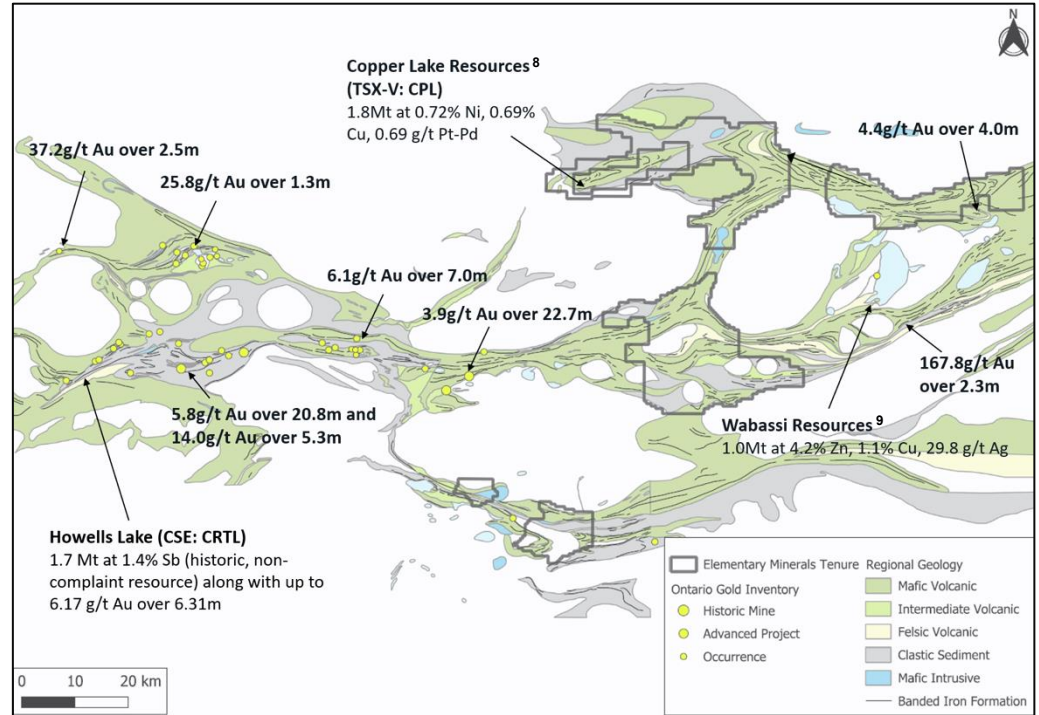


1. Source: digigeodata.com/area/red-lake/
2. Source: 2024 Technical Report: Pickle Crow Gold Project, Ontario, Canada. Prepared by Cube Consulting for Firefly Metals
3. Source: 2024 Technical Report: Musselwhite Mine, Ontario Canada. Prepared by DRA, SLR & WSP for Orla Mining
4. Source: ongoldresources.com/property/tpk/
5. Source: 2024 Kinross Gold PEA 43-101, Great Bear Project
6. Source: 2021 First Mining PFS 43-101, Springpole Gold Project

Fort Hope Greenstone Belt - An Emerging District

Gold-rich Belt

- Western belt well exposed with significant surface discoveries (>100 gram-meter drill intersections) in greenstones & folded banded iron formation (BIF)
- **Eastern belt largely covered by muskeg = limited historic drilling**
- Accidental gold discoveries to date made while targeting base metals (like the Ring of Fire). **No dedicated gold exploration**
- Geology in the east similar to the west, with **tightly folded/faulted BIF, bimodal volcanic sequences, and syn-tectonic felsic intrusions**
- Recognized (but un-studied) **major belt-parallel structures** transect greenstone lithologies



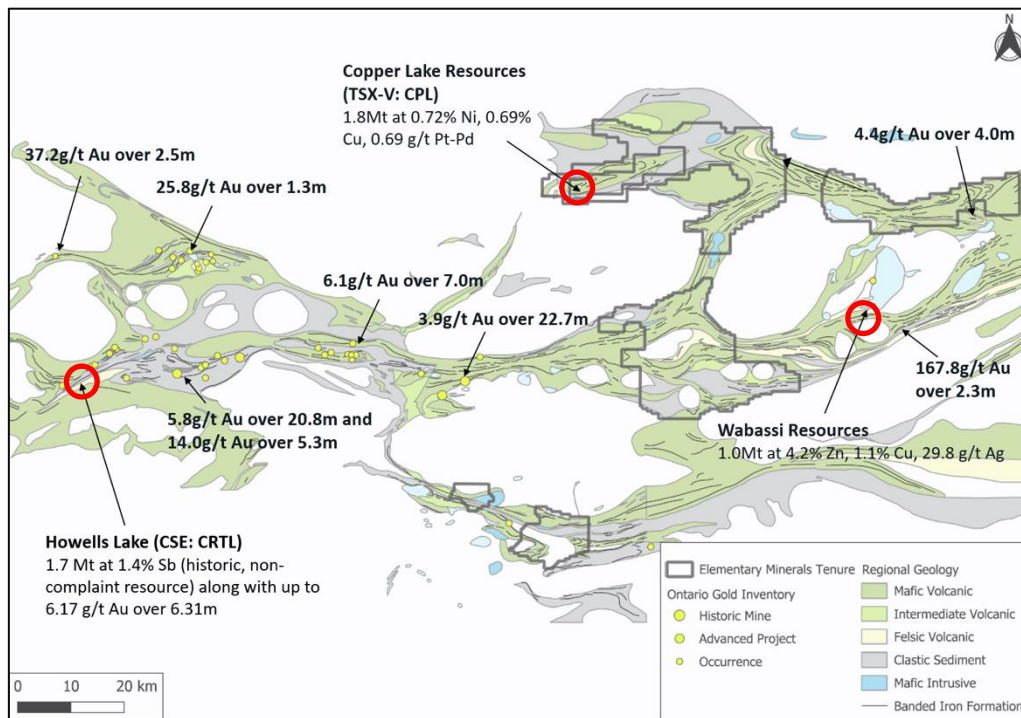
8. Source: 2023 43-101 Technical Report: Norton Lake Ni-Cu-Co-Pd-Pt Property, prepared by Caracle Creek for Copper Lake Resources & Rainy Mountain Royalty

9. Source: 2016 43-101 Technical Report: Initial Resource Estimate, Wabassi E Deposit, Wabassi Property, prepared by P&E Mining Consultants for Wabassi Resources ULC

Fort Hope Greenstone Belt - An Emerging District

Critical Mineral Potential

- Proven base metal potential in the eastern belt with **Ni-Cu-PGE** (Norton Lake deposit, Copper Lake Resources) and **Zn-Cu VMS** (Wabassi Resources) discoveries
- Many untested AEM anomalies remain
- Recent surge in antimony pricing highlights the **Sb-Au** potential of Howells Lake (Critical One Energy)

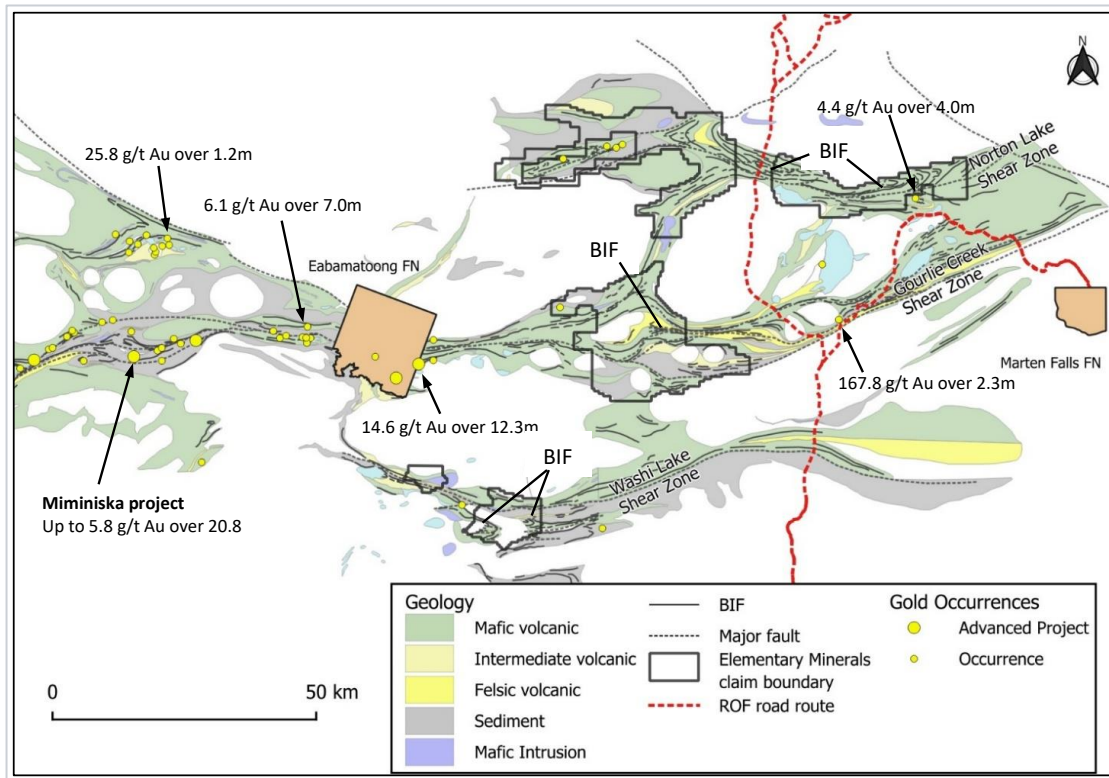


RING OF FIRE ROAD

- Proposed road to the Ring of Fire, located 100km north, transects Elementary's ground
- Road construction to begin 2026
- Improved access will significantly decrease cost of exploration and development

LARGE UNDER EXPLORED TENURE

- Only 20 drill holes documented in the ministry database
- >80% of the claims have no modern geophysics complete
- No till / soil / MMI geochemical surveys on any of the ground



KEY TAKEAWAYS

- 100% owned district scale Hopedale Project hosts twelve significant occurrences found over the past five years
 - Seven gold occurrences, three nickel occurrences, one copper occurrence and one zinc occurrence
- Significant potential for further discovery
 - 3km gold rich Thurber Trend with five significant gold occurrences
 - Anomalous nickel in soil over a total of 2.1km at Rusty Ridge and Last Resort with significant values in grab samples
- 80% owned district scale Watson Project – largest landholding in underexplored Fort Hope Greenstone Belt
 - all season road to the Ring of Fire passes through Watson Property - construction to begin in June 2026
- Significant potential for gold associated with banded iron formation as well as critical minerals nickel and copper



ACKNOWLEDGEMENTS

Newfoundland and Labrador Ministry of Natural Resources' Junior Exploration Assistance (JEA) Program and the Atlantic Canada Opportunities Agency's Critical Minerals Assistance for its financial support for exploration of the Hopedale property.





CONTACT US



Roger Moss, President and CEO



Phone: +1-416-704-8291



E-mail: rmoss@labradorgold.com



Website: www.labradorgold.com

X: @LabGoldCorp

TSX-V: LAB

FNR: 2N6

OTCQX: NKOSF