



A DISTRICT-SCALE GOLD/CRITICAL METALS OPPORTUNITY

Corporate Presentation
October 2024

TSX-V: LAB

FNR: 2N6

OTCQX: NKOSF

DISCLAIMER

Statements contained in this presentation that are not historical facts may be forward-looking statements within the meaning of the US Private Securities Litigation Reform Act of 1995 and forward looking information under similar Canadian legislation (collectively, "Forward Looking Information"). Forward Looking Information includes, but is not limited to, statements regarding the Company's strategic plans, property search and evaluation plans, estimated levels of mineral reserves, mineral resources and expenditures, success of exploration activities, and acquisition targets and commitments. Forward Looking Information is based on information currently available to the Company and the Company provides no assurance that actual results will meet management's expectations. In certain cases, Forward Looking Information may be identified by such terms as "anticipates", "believes", "could", "estimates", "expects", "may", "shall", "will", or "would", and is based on certain factors and assumptions regarding, among other things, the estimation of mineral resources, the realization of resource estimates, the timing and amount of future exploration and development expenditures, the availability of necessary financing and materials to continue to explore and develop properties, the receipt of necessary regulatory approvals, and assumptions with respect to currency fluctuations, environmental risks, title disputes or claims, and other similar matters. While the Company considers these assumptions to be reasonable based on information currently available to it, they may prove to be incorrect. Forward Looking Information involves known and unknown risks, uncertainties and other factors which may cause the actual results, performance or achievements of the Company to be materially different from any future results, performance or achievements expressed or implied by the Forward Looking Information. Such factors include risks inherent in the exploration and development of mineral deposits, risks relating to variations in mineral resources, grade or recovery rates resulting from current exploration and development activities, risks relating to changes in metal prices and the worldwide demand for and supply of metals, risks related to increased competition in the mining industry generally, risks related to current global financial conditions, uncertainties inherent in the estimation of mineral resources, access and supply risks, reliance on key personnel, operational risks inherent in the conduct of mining activities, risk of delays or increased costs during the development process and relating to the acquisition of licenses and permits, regulatory risks, risks related to disputes concerning property titles and interest, and environmental risks. This list is not exhaustive of the factors that may affect any of the Company's Forward Looking Information. These and other factors should be considered carefully and readers should not place undue reliance on the Company's Forward Looking Information. The Company does not undertake to update any Forward Looking Information or statements that may be made from time to time by the Company or on its behalf, except in accordance with applicable securities laws. Note that mineralization on adjacent properties in similar rocks, and assays based on historical work in surface sampling and drilling, are not representative of the mineralization on the property, and have not been verified and should not be relied upon.

The technical content of this presentation has been prepared by Roger Moss, Ph.D., P.Geo. the company's qualified person.



WHY LABRADOR GOLD?

- District scale Hopedale project with gold and critical metals potential

- Politically stable jurisdiction supportive of mineral exploration

- Experienced exploration team with success in finding and advancing gold deposits

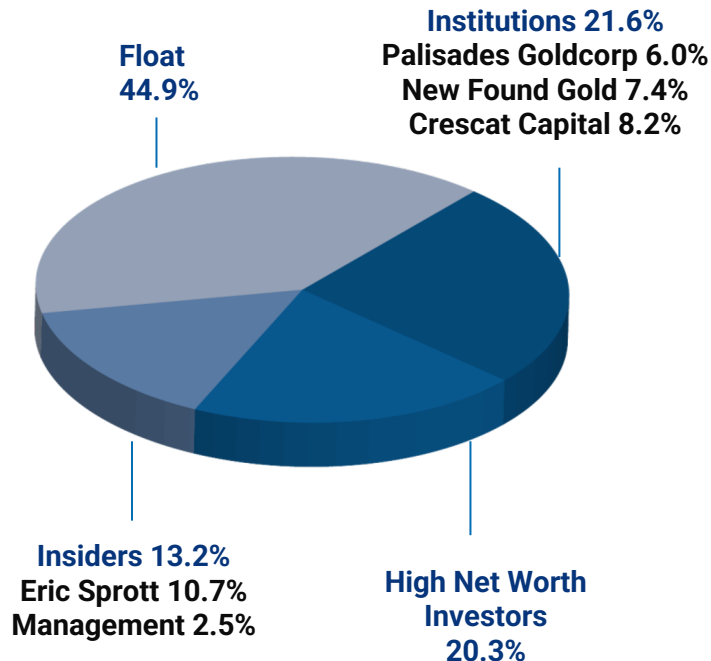
- Strong support from long-term shareholders including ~40% from quality institutions and insiders



- Approximately \$6M cash, no debt. Entered into an agreement with Newfound Gold ("NFG") for the sale of Kingsway for \$20M in NFG common shares

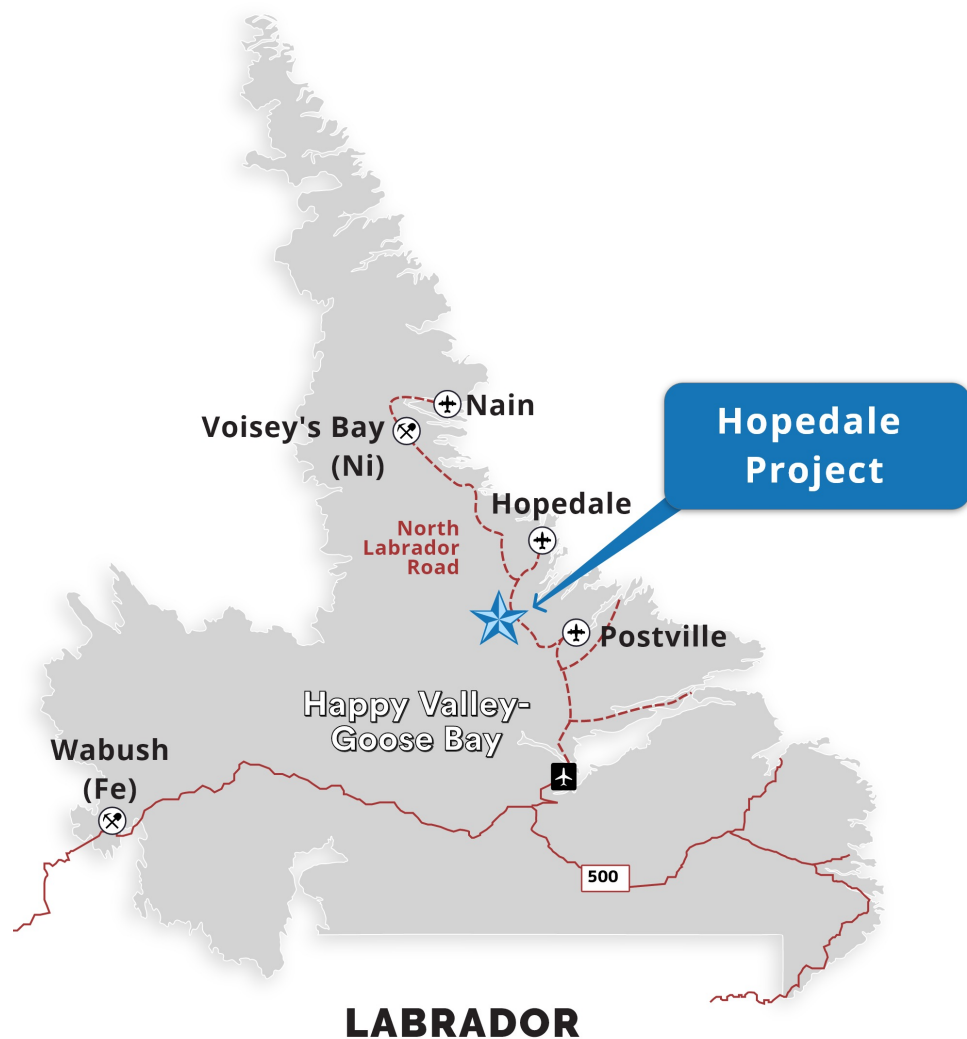
SHARE STRUCTURE

Ticker(s)	TSX-V: LAB FSE: 2N6 OTC: NKOSF
Share Price – Oct 3rd	C\$0.08
Market Capitalization	~C\$13.6 million
Issued and Outstanding Shares	170.0M
Options	7.3M
Fully Diluted	177.3M
Cash	~C\$6M
Insider Ownership	13.2%
Eric Sprott	10.7%
Management	2.5%



HOPEDALE PROJECT

- District Scale - Covers most of Florence Lake greenstone belt
- 5 years of exploration has outlined multiple trends of precious & base metal targets
- East end of property on tidewater 30km southwest of Hopedale Community
- Daily air service from Happy Valley-Goose Bay to Hopedale Community



EXPLORATION AT HOPEDALE

Initial
reconnaissance soil
and lake sediment
sampling



2017

Follow up soil sampling,
mapping and
prospecting. Outlined a
3km trend of anomalous
gold in rock and soil



2018

Discovery of
TD 500



2019

High grade gold
identified at TD500
and copper at Kapaak



2022

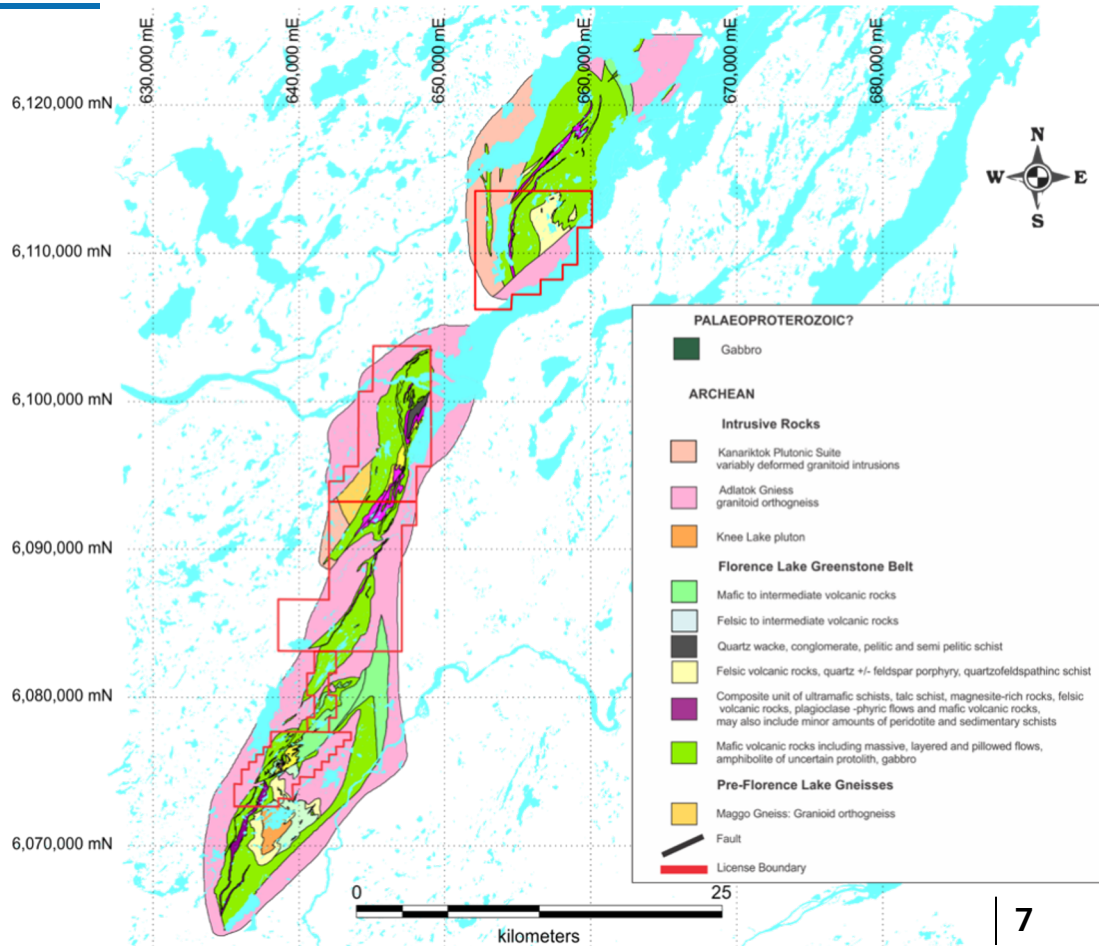
High Grade gold at
Fire Ant, significant
anomalous trends of
Ni in rock and soil at
Rusty Ridge and Last
Resort



2023

FLORENCE LAKE GREENSTONE BELT

- Five licenses (785 claims) cover 43 kilometres of the Florence Lake Greenstone Belt
- Underexplored District
- Potential for copper, nickel and zinc in addition to gold
- Greenstone Belts worldwide known to be prolific hosts of gold



Comparison of footprint of major Greenstone Hosted Gold Camps of Ontario and the Florence Lake Greenstone Belt (80% controlled by Labrador Gold Corp.)



T
70Moz



RL
27Moz



KL
25Moz



LL
14.5Moz



FL
?Moz

60km

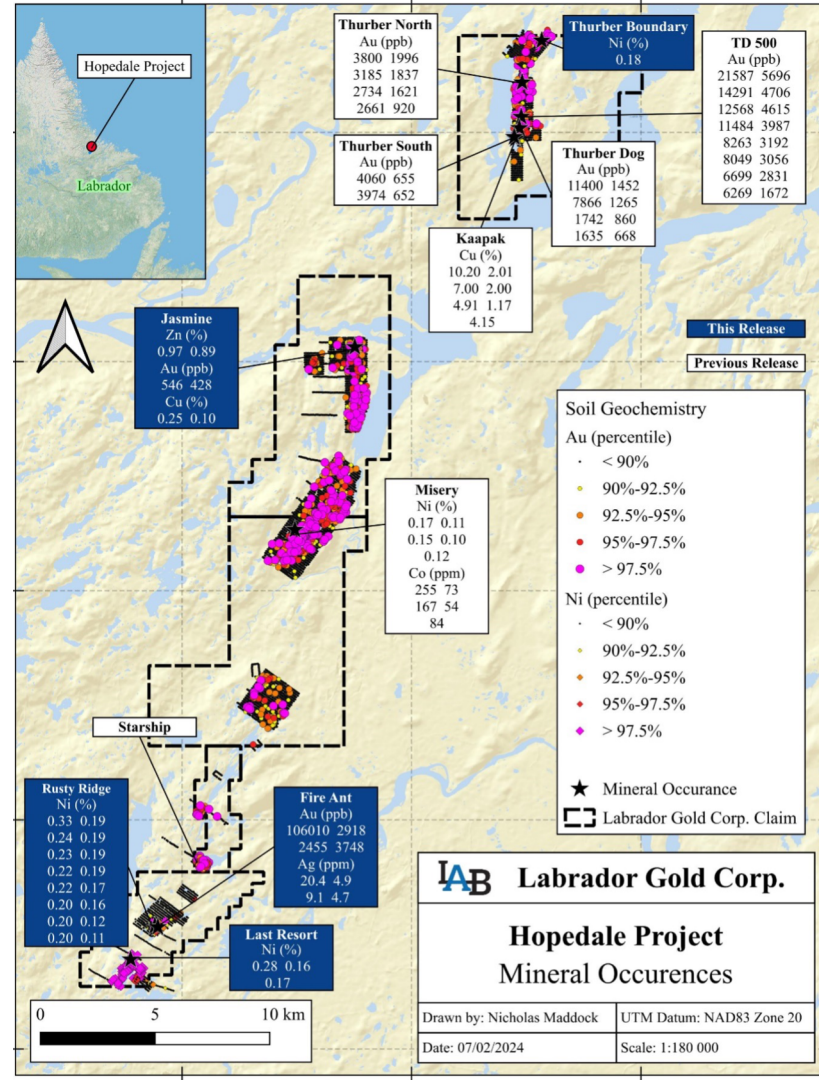


GREENSTONE HOSTED GOLD CAMPS

HOPEDALE PROJECT

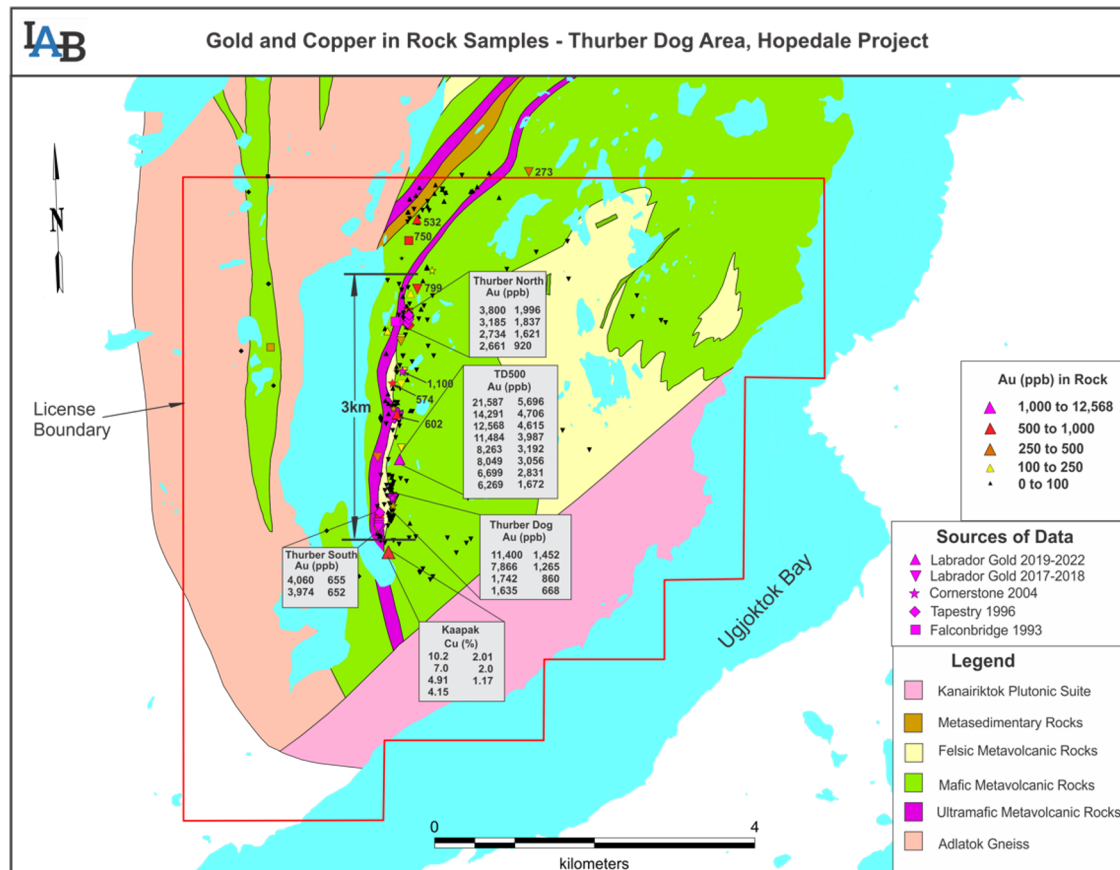
Ten significant mineral occurrences identified on the Hopedale project to date reflecting multiple mineralization styles including:

- Orogenic gold – Four occurrences on Thurber License + Fire Ant at Rusty Ridge
- Magmatic Ni sulphide – **Rusty Ridge, Misery & Last Resort**
- Copper-silver vein - **Kapaak**
- Zn-rich volcanogenic massive sulphide - **Jasmine**



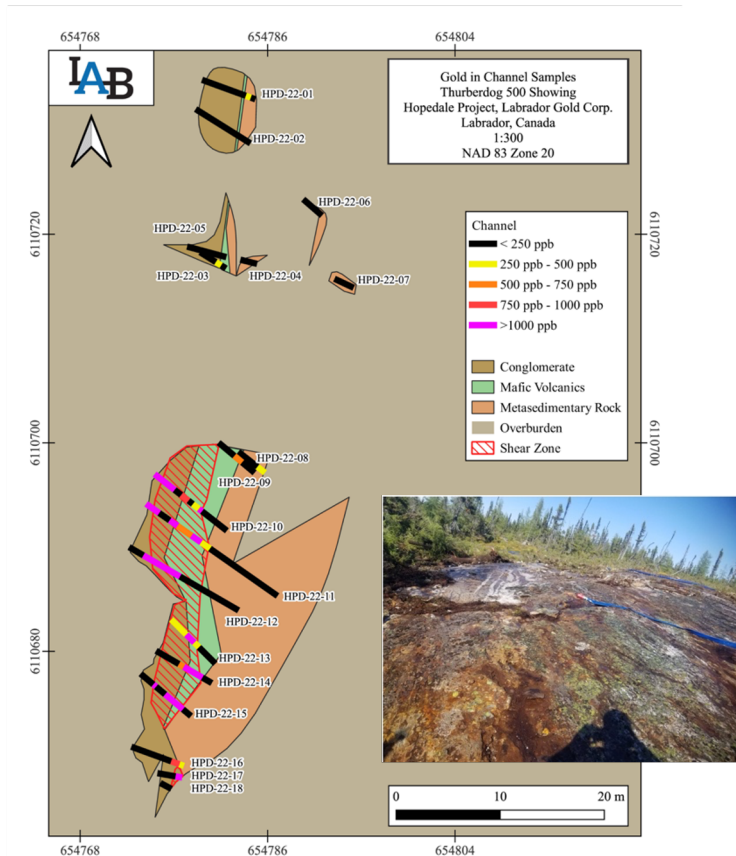
NORTHERN 'THURBER' LICENSE

- 3km long strike length of gold mineralization in rock and soil
- 4 significant gold occurrences
 - Thurber North up to 3.8 g/t Au
 - TD500 up to 21.59 g/t Au
 - Thurber Dog up to 11.4 g/t Au
 - Thurber South up to 4.1 g/t Au
- Significant copper- silver occurrence at Kapaak
 - 1.08 to 10.2% Cu
 - 0.2 to 9.2 g/t Ag



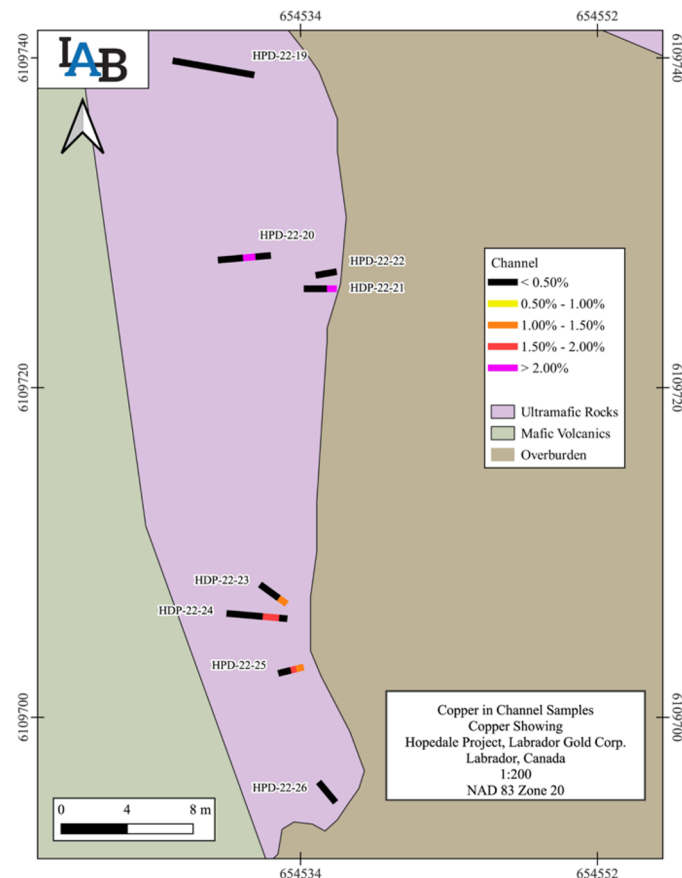
TD 500 CHANNEL SAMPLING

Channel ID	from (m)	to (m)	width (m)	Au(g/t)
HPD-22-10	3.03	8.2	5.17	2.91
including	6.37	8.2	1.83	7.21
HPD-22-11	7.92	14.8	6.88	2.35
including	8.96	10.08	1.12	3.42
and	11.73	12.65	0.92	4.1
and	13.87	14.8	0.93	7.56
HPD-22-12	6.5	11.54	5.04	4.23
including	6.6	9.9	3.3	6.08
including	7.87	8.95	1.08	7.74
HPD-22-13	2.86	3.94	1.08	1.49
HPD-22-14	1.05	3.12	2.07	2.93
HPD-22-15	1.02	5.72	4.7	1.59
including	1.02	3.25	2.23	3.05
including	2.01	3.25	1.24	4.21
HPD-22-17	0	0.65	0.65	8.14



KAPAAK CHANNEL SAMPLING

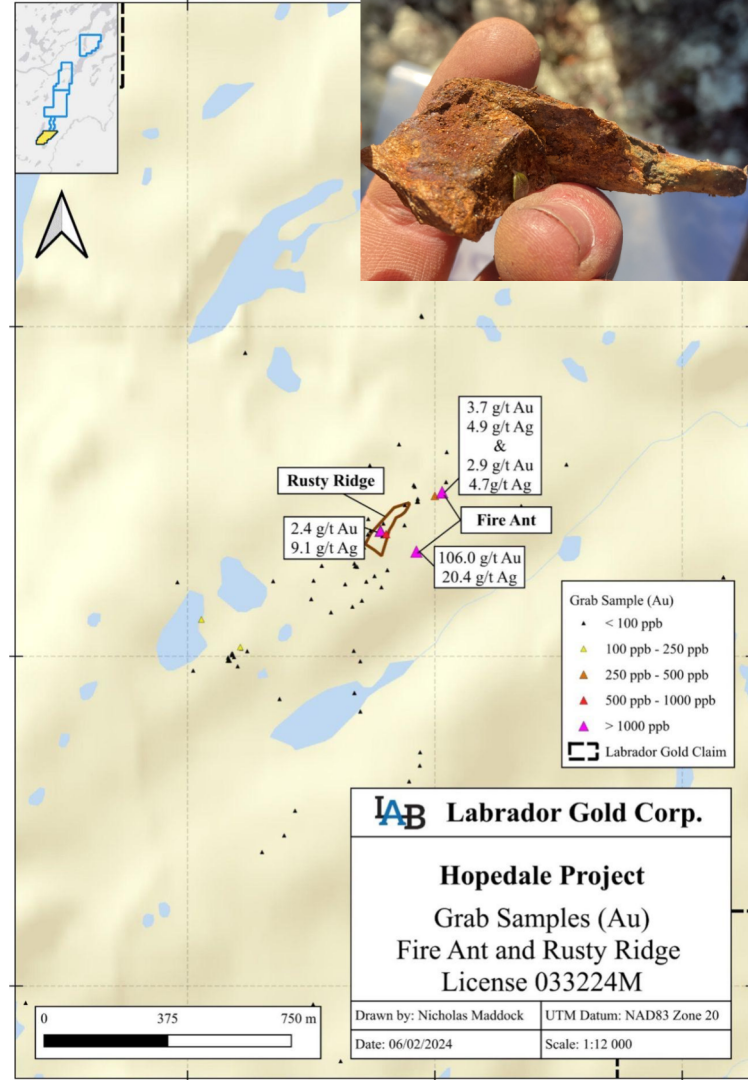
Channel ID	from (m)	to (m)	width (m)	Cu (%)
HPD-22-20	0.94	1.70	0.76	3.31
HPD-22-21	0.00	0.60	0.60	2.40
HPD-22-23	0.00	0.60	0.60	1.08
HPD-22-24	0.00	1.50	1.50	1.09
including	0.50	1.50	1.00	1.55
HPD-22-25	0.00	1.19	1.19	1.14
including	0.00	0.81	0.81	1.48
and	0.48	0.81	0.33	1.59



FIRE ANT GOLD OCCURRENCE

High-grade gold up to 106g/t with 20.4g/t Ag in rock grab samples

- Newly discovered mineralization hosted by gossanous felsic volcanic rocks close to contact with ultramafic volcanic rocks.
- Target traced over a strike length of approximately 200 metres.

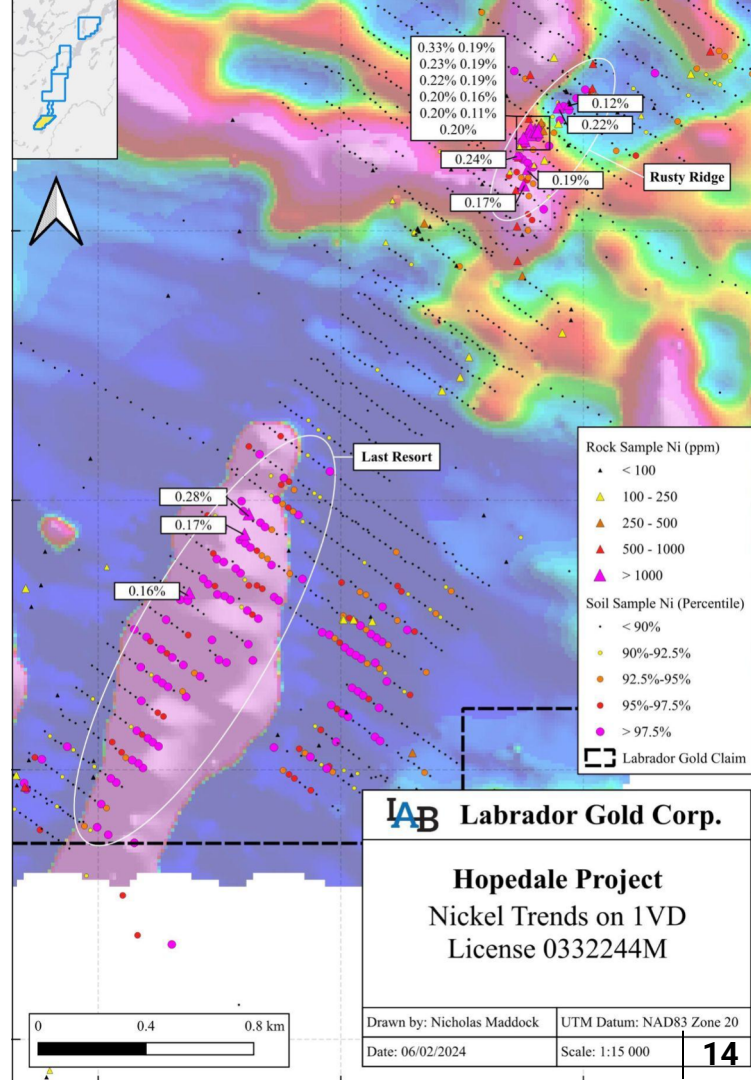


RUSTY RIDGE & LAST RESORT

Anomalous Ni area at Rusty Ridge extended to 550m

- 14 grab samples of rock assayed over 0.1% Ni and included values up to 0.28% Ni with nickel values in soil up to 2,271ppm (0.23%)

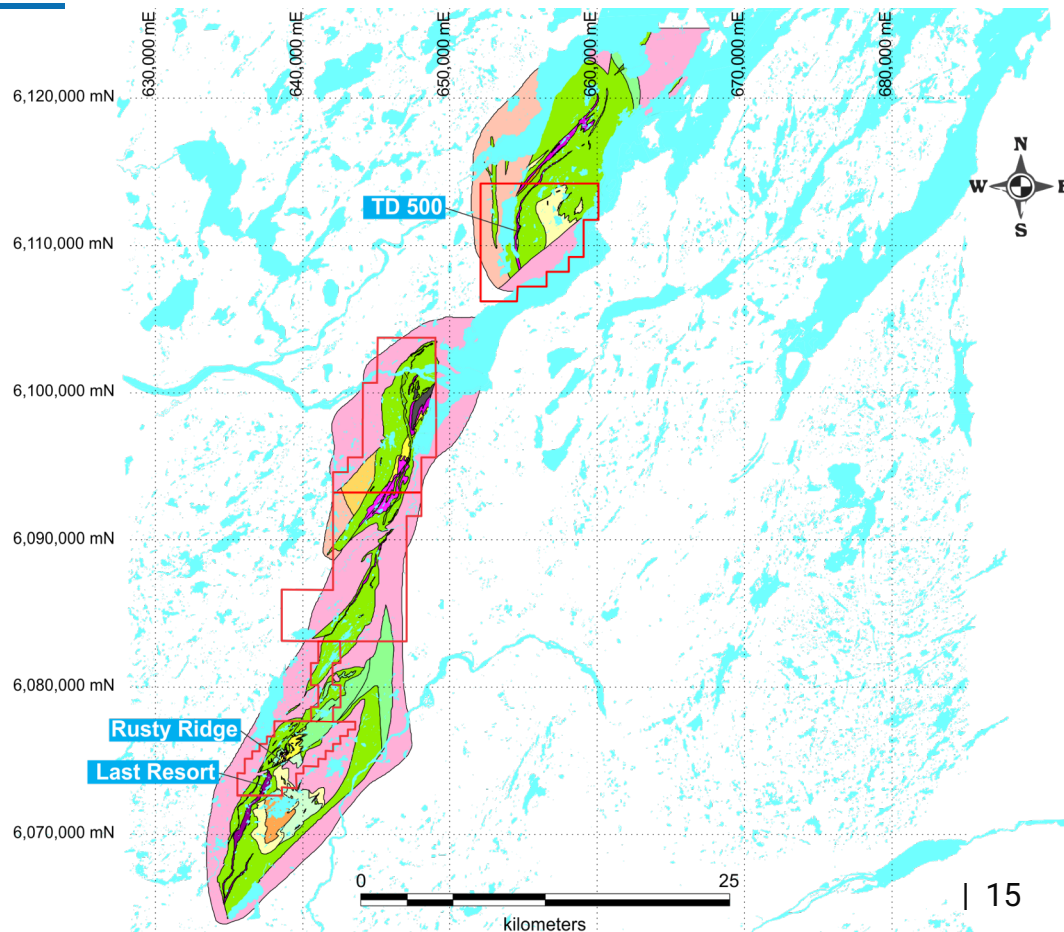
Last Resort shows anomalous nickel in soil and rock samples over a 1.6km strike length coincident with a **significant magnetic high**





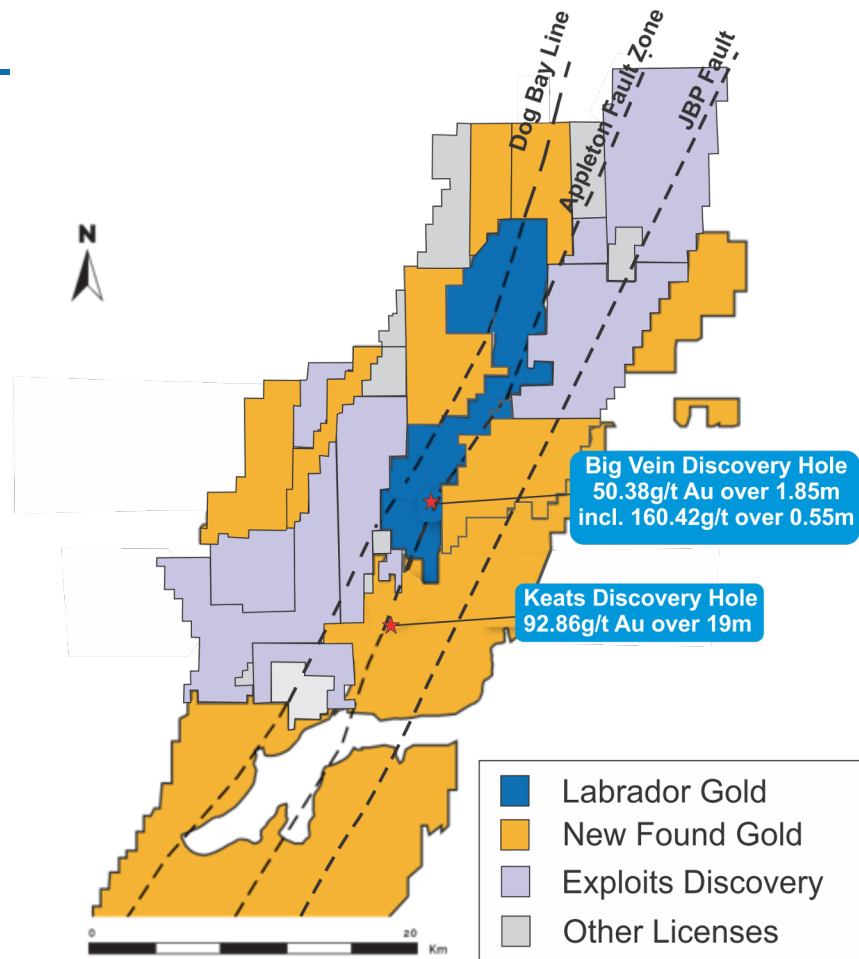
PLANNED WORK

- Reinterpretation of geophysics at Rusty Ridge, Last Resort and TD 500
- Prospecting and mapping at Rusty Ridge, Last Resort and TD 500
- Ground electromagnetic survey over Rusty Ridge, Misery and Jasmine to define targets for drilling



KINGSWAY PROJECT

- In April 2024, LabGold entered into a purchase agreement with New Found Gold Corp ("NFG"), whereby NFG acquired a 100% interest in the Kingsway Project in exchange for \$20,000,000 CAD in NFG Common Shares





KEY TAKEAWAYS

- District scale Hopedale Project continues to show excellent potential for gold and critical metals nickel and copper
- Ten occurrences found over the past five years
 - Five gold occurrences, three nickel occurrences, one copper occurrence and one zinc occurrence
- Significant potential for further discovery
 - 3km gold rich trend with four gold occurrences
 - Anomalous nickel in soil over a total of 2.1km at Rusty Ridge and Last
 - Resort with significant values in grab samples
- Approximately \$6 million cash on hand with 5,263,157 common shares of Newfound Gold

ACKNOWLEDGEMENTS

FIELD CREW AND SUPPORT STAFF

John Clarke,
Nicholas Maddock,
Louise Moyles, Tommy Tuglavina

Newfoundland and Labrador Ministry of Natural Resources' Junior Exploration Assistance (JEA) Program for its financial support for exploration of the Hopedale property.





CONTACT US



Roger Moss, President and CEO



Phone: +1-416-704-8291



E-mail: rmoss@labradorgold.com



Website: www.labradorgold.com

X: @LabGoldCorp

TSX-V: LAB

FNR: 2N6

OTCQX: NKOSF