



KINGSWAY GOLD PROJECT, CENTRAL NEWFOUNDLAND

NOVEMBER 2023

TSX-V: LAB

FNR: 2N6

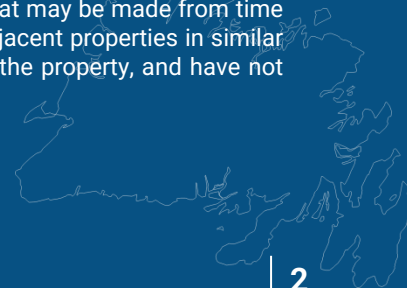
OTCQX: NKOSF



DISCLAIMER

Statements contained in this presentation that are not historical facts may be forward-looking statements within the meaning of the US Private Securities Litigation Reform Act of 1995 and forward looking information under similar Canadian legislation (collectively, "Forward Looking Information"). Forward Looking Information includes, but is not limited to, statements regarding the Company's strategic plans, property search and evaluation plans, estimated levels of mineral reserves, mineral resources and expenditures, success of exploration activities, and acquisition targets and commitments. Forward Looking Information is based on information currently available to the Company and the Company provides no assurance that actual results will meet management's expectations. In certain cases, Forward Looking Information may be identified by such terms as "anticipates", "believes", "could", "estimates", "expects", "may", "shall", "will", or "would", and is based on certain factors and assumptions regarding, among other things, the estimation of mineral resources, the realization of resource estimates, the timing and amount of future exploration and development expenditures, the availability of necessary financing and materials to continue to explore and develop properties, the receipt of necessary regulatory approvals, and assumptions with respect to currency fluctuations, environmental risks, title disputes or claims, and other similar matters. While the Company considers these assumptions to be reasonable based on information currently available to it, they may prove to be incorrect. Forward Looking Information involves known and unknown risks, uncertainties and other factors which may cause the actual results, performance or achievements of the Company to be materially different from any future results, performance or achievements expressed or implied by the Forward Looking Information. Such factors include risks inherent in the exploration and development of mineral deposits, risks relating to variations in mineral resources, grade or recovery rates resulting from current exploration and development activities, risks relating to changes in metal prices and the worldwide demand for and supply of metals, risks related to increased competition in the mining industry generally, risks related to current global financial conditions, uncertainties inherent in the estimation of mineral resources, access and supply risks, reliance on key personnel, operational risks inherent in the conduct of mining activities, risk of delays or increased costs during the development process and relating to the acquisition of licenses and permits, regulatory risks, risks related to disputes concerning property titles and interest, and environmental risks. This list is not exhaustive of the factors that may affect any of the Company's Forward Looking Information. These and other factors should be considered carefully and readers should not place undue reliance on the Company's Forward Looking Information. The Company does not undertake to update any Forward Looking Information or statements that may be made from time to time by the Company or on its behalf, except in accordance with applicable securities laws. Note that mineralization on adjacent properties in similar rocks, and assays based on historical work in surface sampling and drilling, are not representative of the mineralization on the property, and have not been verified and should not be relied upon.

The technical content of this presentation has been prepared by Roger Moss, Ph.D., P.Geo. the company's qualified person.





WHY LABRADOR GOLD?



Flagship Kingsway gold project located in an emerging gold district, compared to Abitibi Greenstone Belt



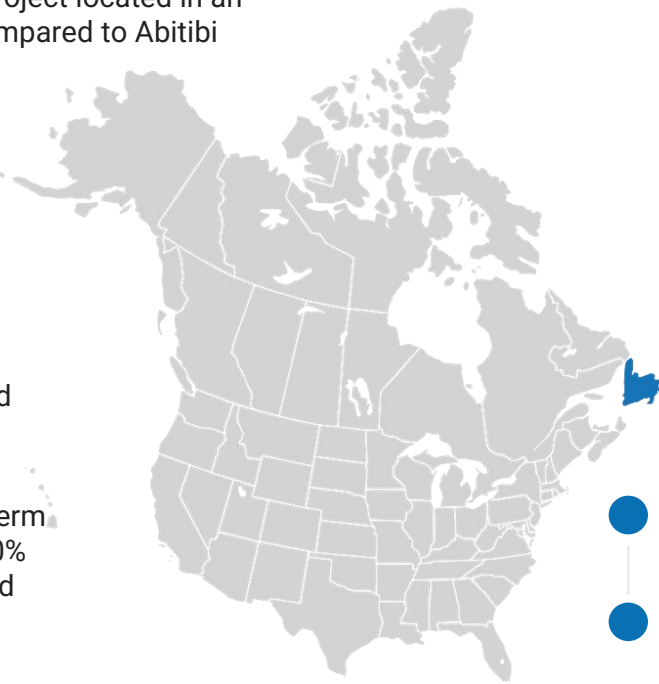
Politically stable jurisdiction supportive of mineral exploration



Experienced exploration team with success in finding and advancing gold deposits



Strong support from long-term shareholders including ~40% from quality institutions and insiders



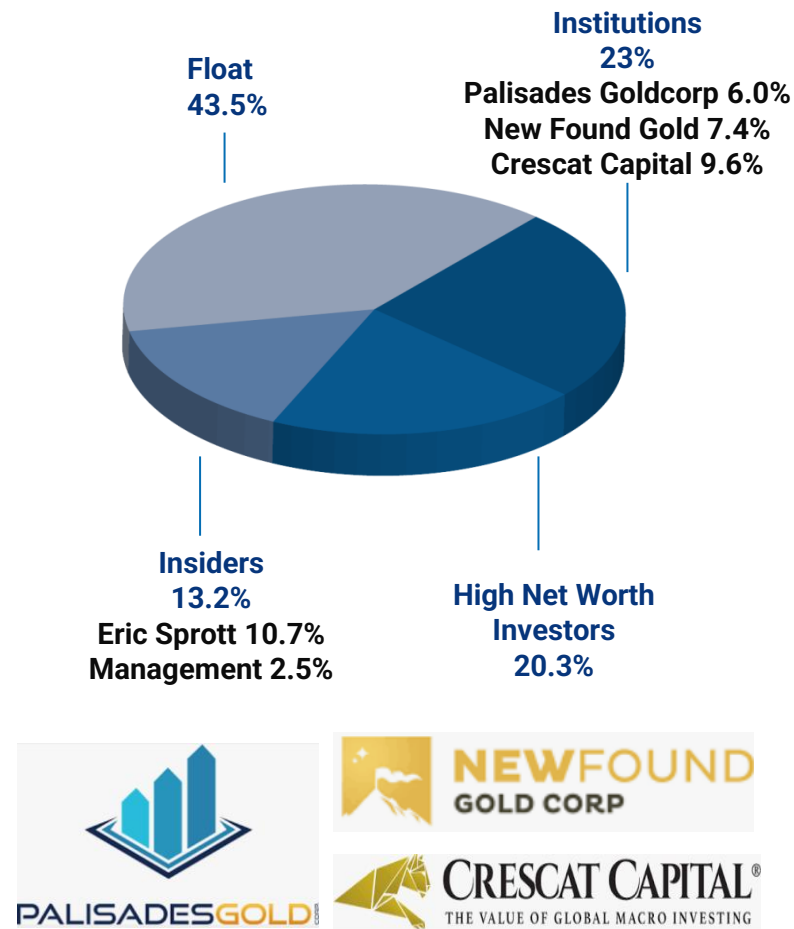
13,000m remaining of 100,000m drill program – fully funded



Approximately \$9 million cash, no debt

SHARE STRUCTURE

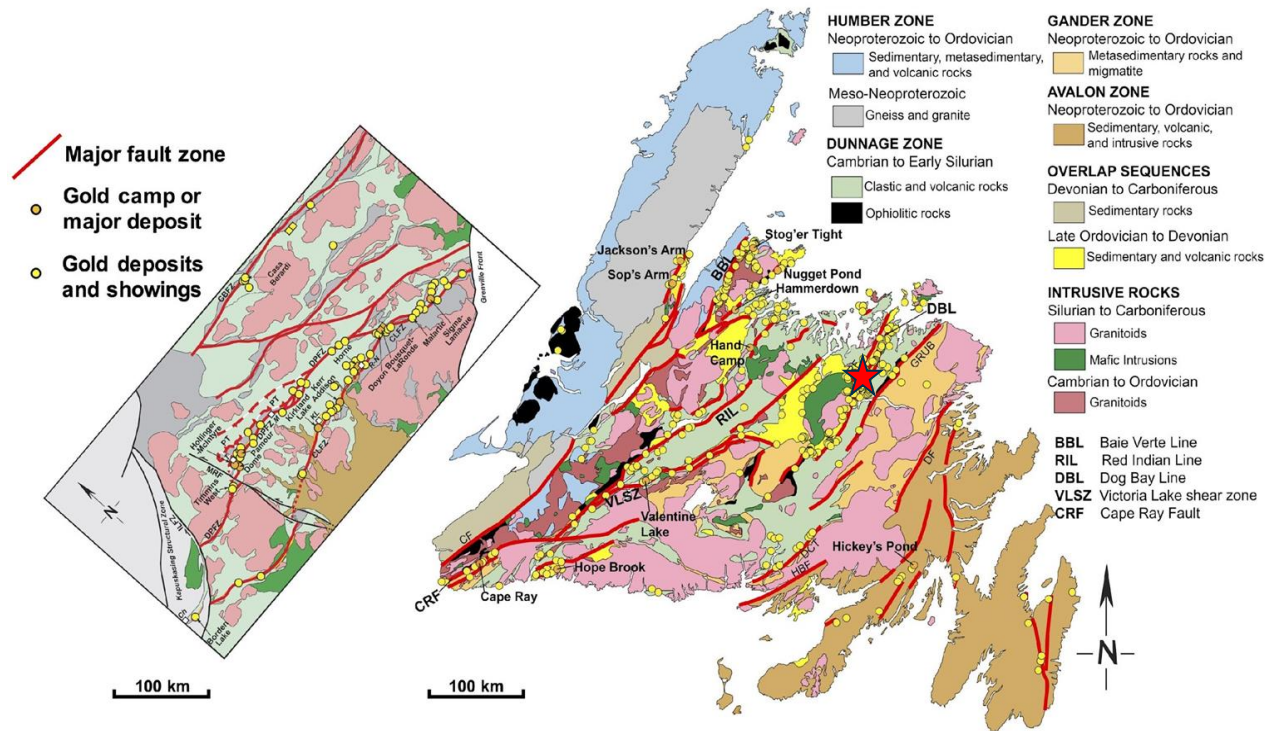
Ticker(s)	TSX-V: LAB FSE: 2N6 OTC: NKOSF
Share Price – November 14	C\$0.135
Market Capitalization	~C\$23 million
Issued and Outstanding Shares	170.0M
Options	7.8M
Fully Diluted	177.8M
Cash	~C\$9M
Insider Ownership	13.2%
Eric Sprott	10.7%
Management	2.5%





ABITIBI - CENTRAL NEWFOUNDLAND COMPARISON

- Gold associated with major fault zones
- Similar distribution of deposits
- Similar lithologies

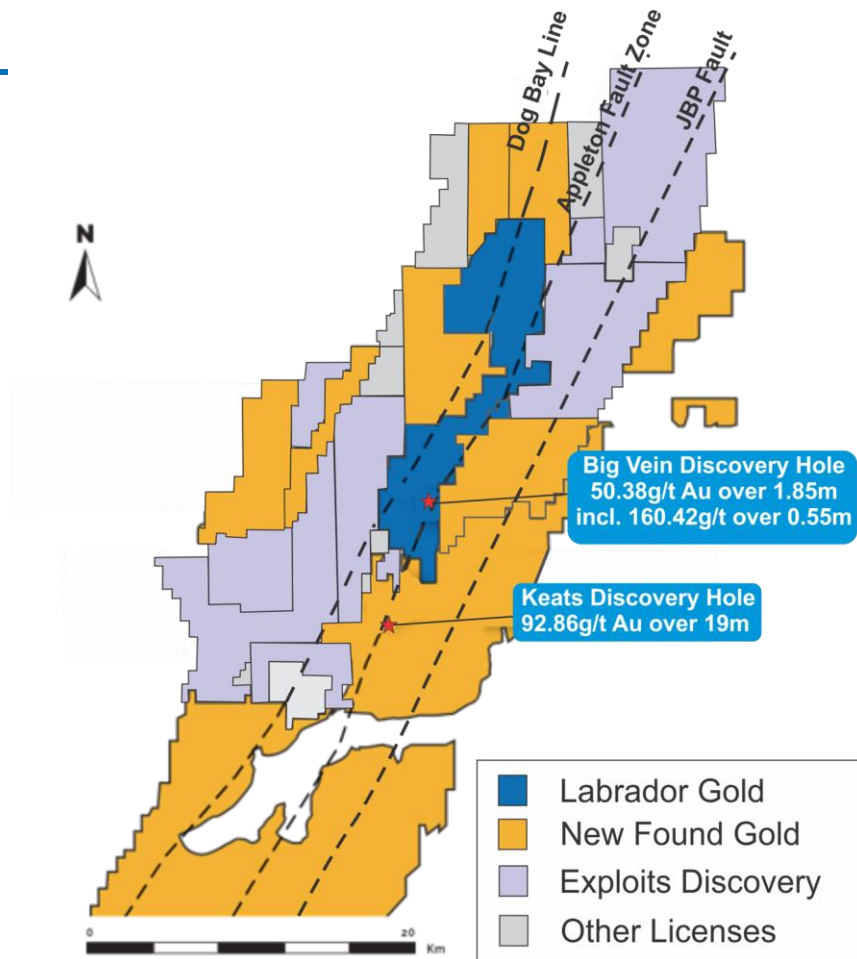




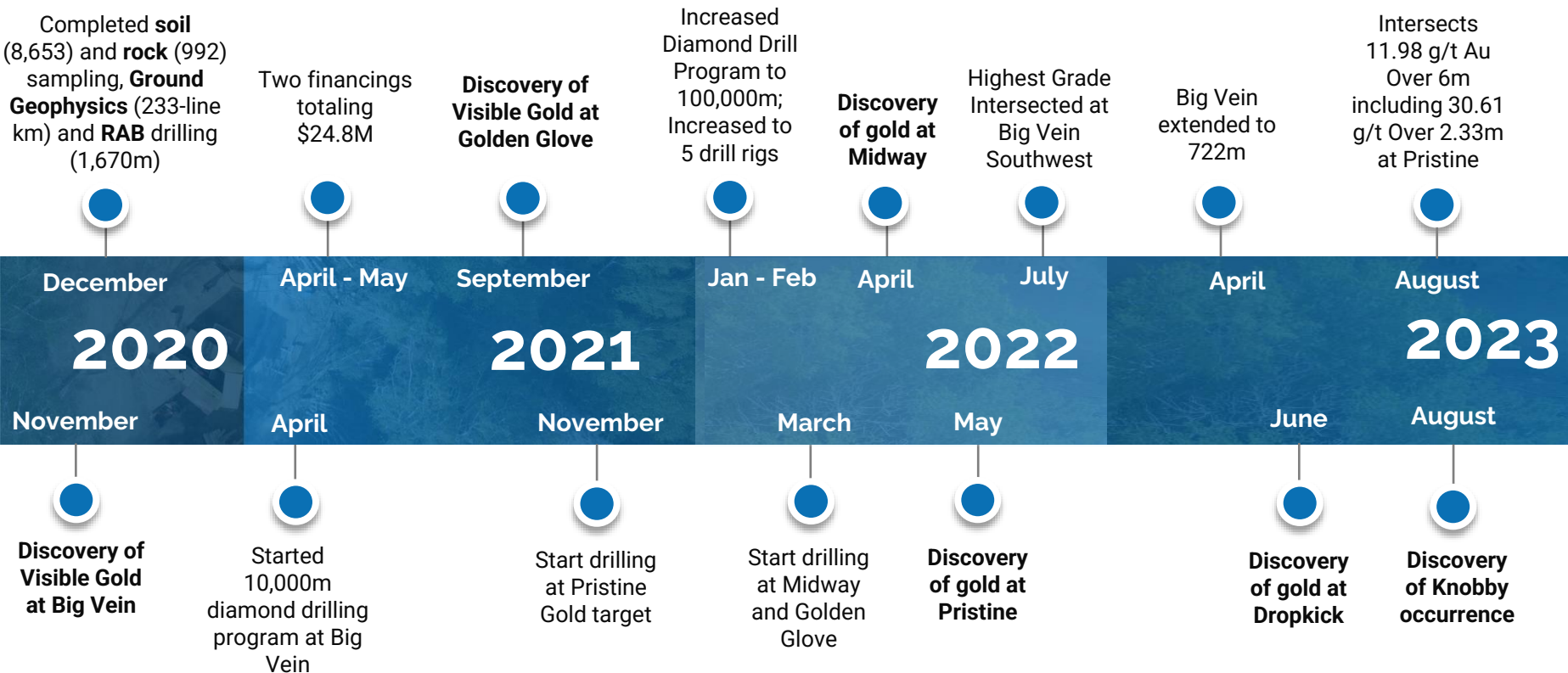
OUR FLAGSHIP PROJECT

Kingsway Property

- Consists of four licenses covering 77 square kilometers
- Licenses cover approximately 20 kilometers of strike length of two crustal scale faults, the Dog Bay Line (8km) and the Appleton Fault Zone (12km)
- Excellent infrastructure - 18km from Gander, road accessible, nearby electricity and plentiful water
- Target: Orogenic gold associated with major crustal structures and associated faults

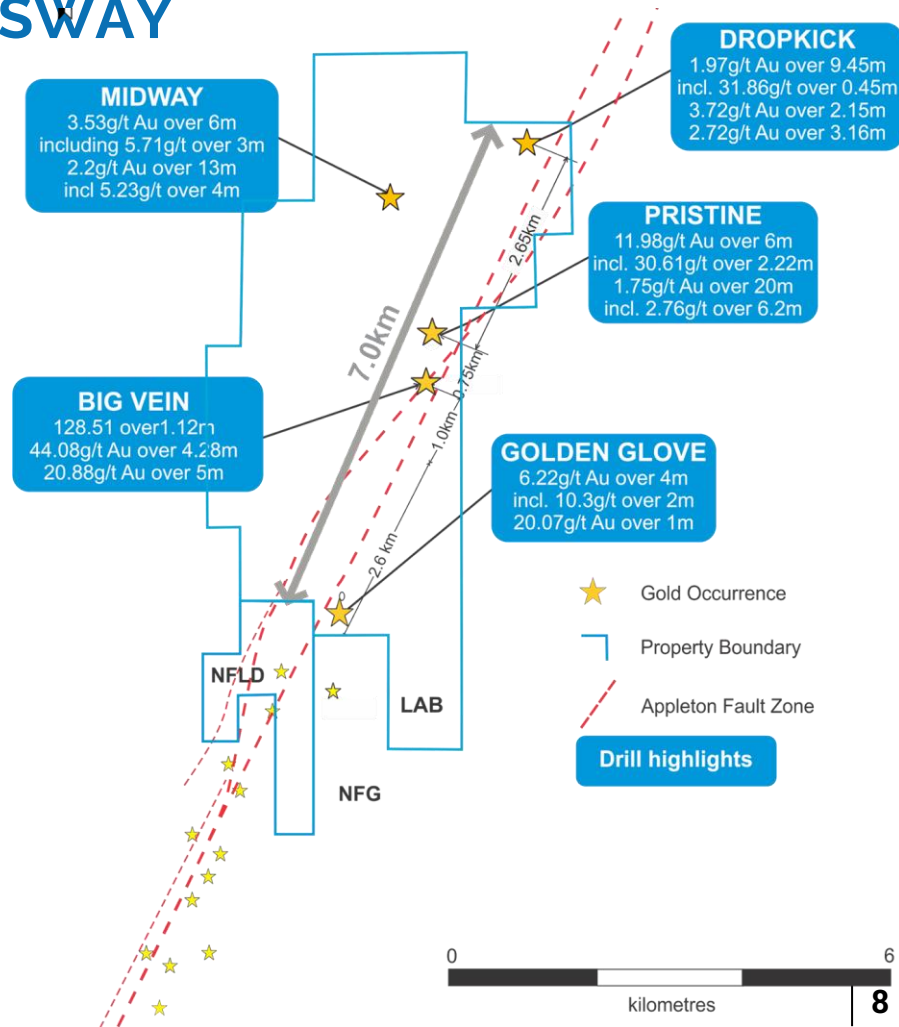


EXPLORATION AT KINGSWAY



5 of 6 Discoveries vs. Targets

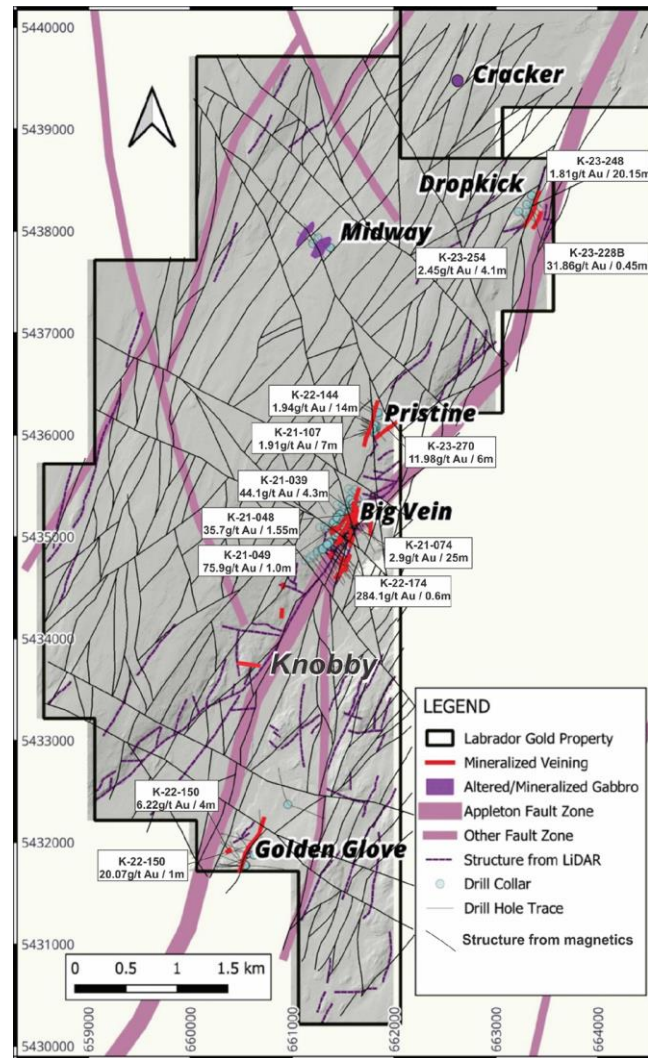
- Fiver gold occurrences identified and successfully drilled over the past 2 years - 83% success rate
- Only 1.4km of 12km strike length of Appleton Fault Zone drilled
- Many more targets developing along the Appleton Fault
- Big Vein discovery now extends to ~720m along strike and remains open in both directions.





KINGSWAY OCCURRENCES

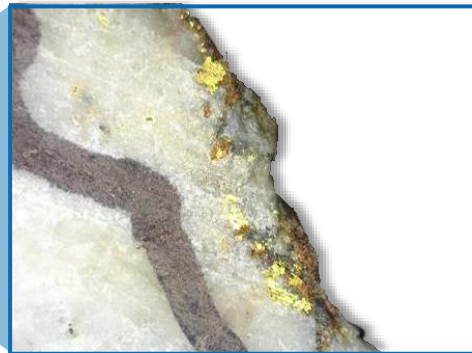
- Four occurrences discovered over a 7.4km strike length of the Appleton Fault Zone
- Gold occurs in quartz veins associated with arsenopyrite, pyrite and occasional stibnite
- Fifth occurrence, Midway, approximately 2km to the west
- Gold is disseminated in gabbroic host rock associated with arsenopyrite and pyrite



BIG VEIN VISIBLE GOLD DISCOVERY



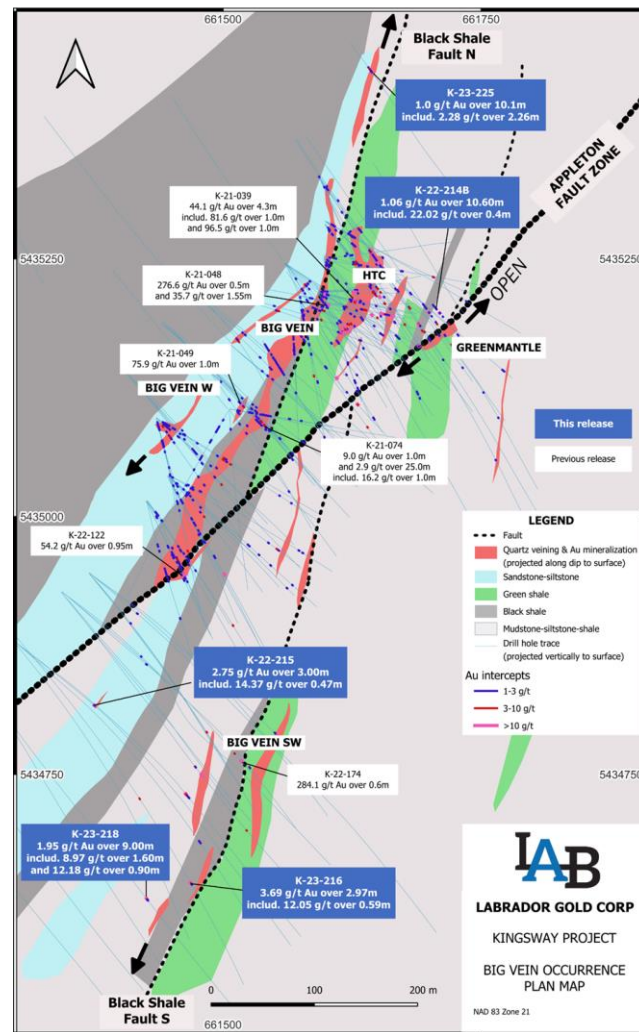
Assayed 1,065 g/t Au





BIG VEIN CONTINUED DISCOVERY

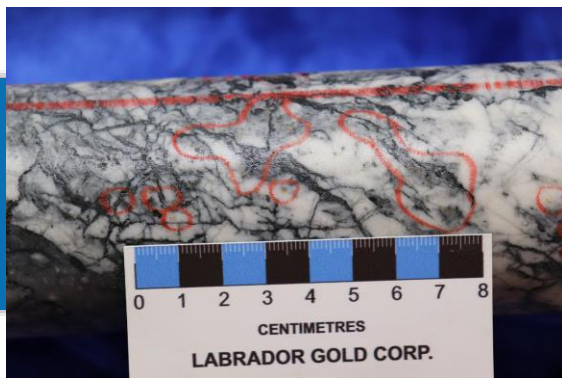
- Aggressive stepouts to NE and SW extend Big Vein to 720 metre strike length
- Intersections include:
 - 44.08g/t Au over 4.28m
 - 284.1 g/t Au over 0.58m
 - 20.88 g/t Au over 5m
 - 6.08 g/t Au over 19m
 - 128.51 g/t Au over 1.12m
 - 50.52 g/t Au over 2m
 - 276.56 g/t Au over 0.5m



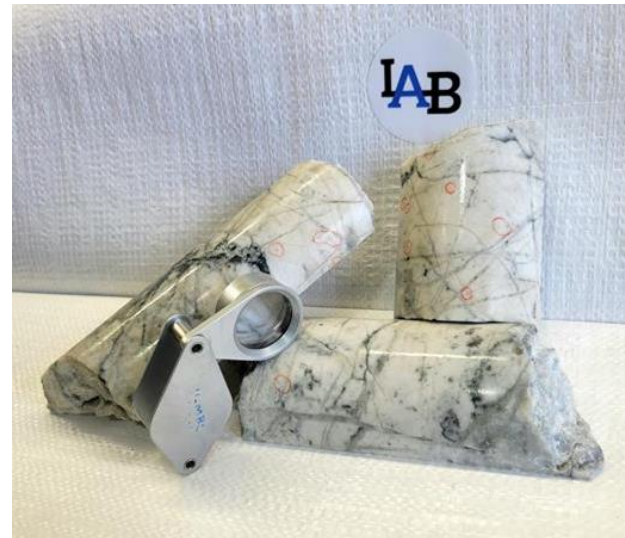
BIG VEIN GOLD MINERALIZATION



K-22-017
50.38g/t Au over
1.85m incl. 160.42g/t
over 0.55m



K-22-174
284.1g/t Au over
0.58m

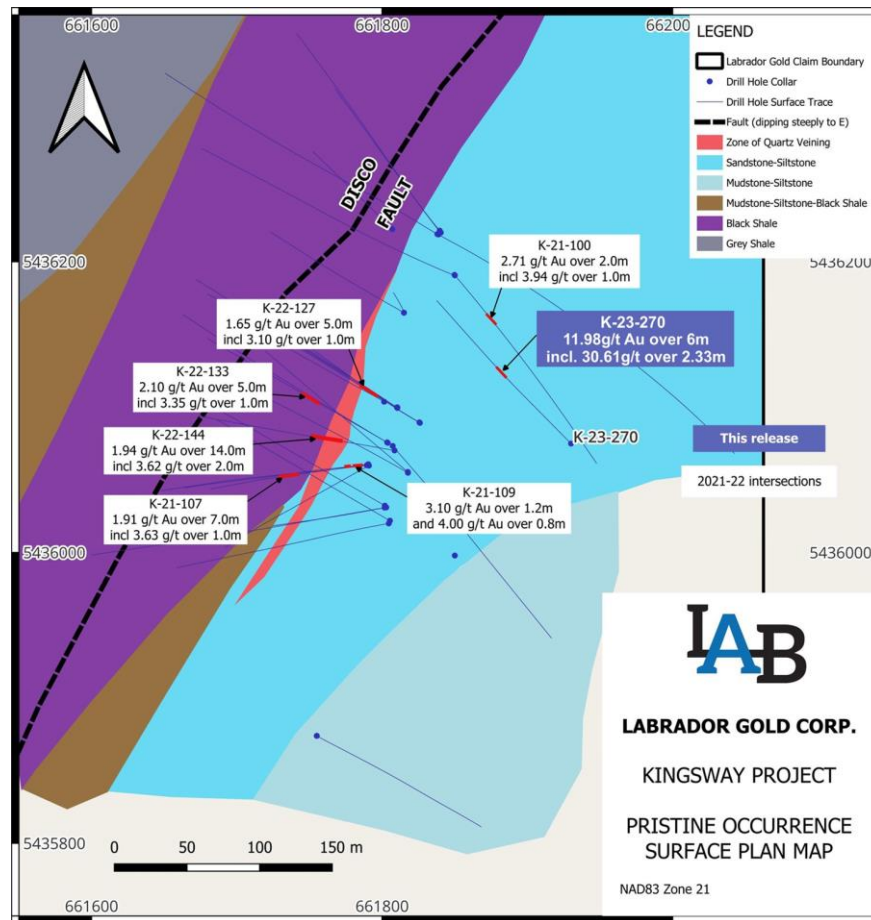


K-21-039
44.08g/t Au over 4.28m

HIGH-GRADE DISCOVERY AT PRISTINE

Follow up drilling at Pristine included an intersection of:

- 11.98g/t Au over 6m including 82.2g/t over 0.75m that contained 77 grains of visible gold
- Mineralization drilled to date occurs above 86 metres vertical depth over 160m strike length



VISIBLE GOLD IN PRISTINE DRILL CORE

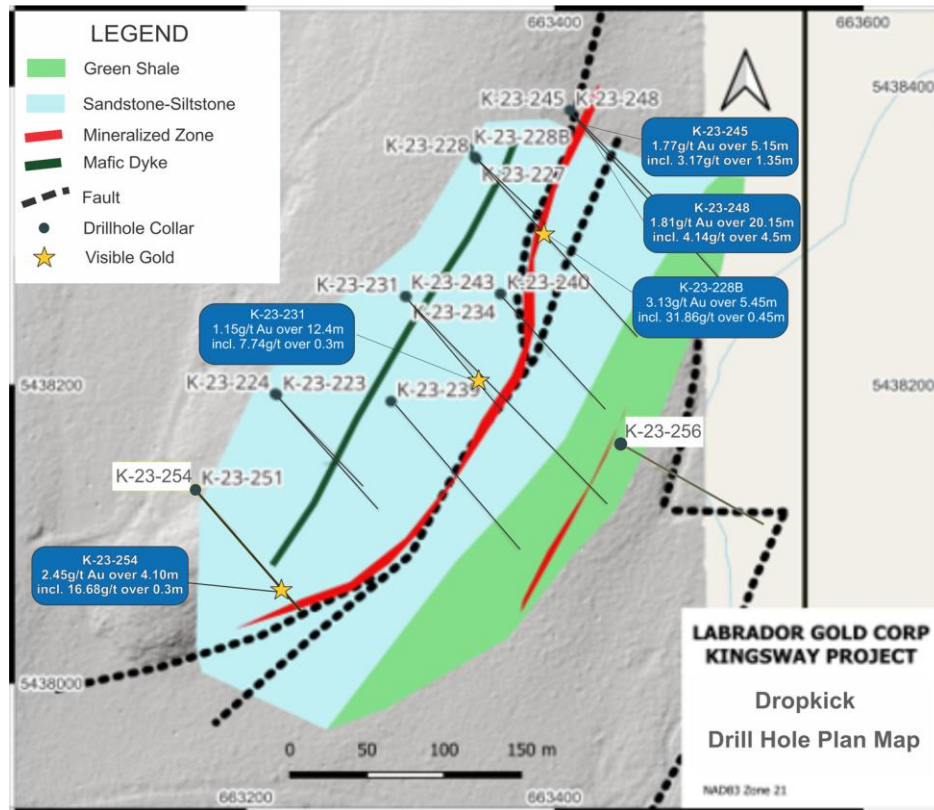
The high-grade interval in Hole K-22-270 at the Pristine target contained 77 grains of visible gold.





DROPKICK DISCOVERY

- Approximately 3.4km north of Big Vein
- Blind discovery made by following up gold in soil anomaly
- Follow up diamond drilling intersected gold in 12 out of 15 holes with visible gold in 4 holes
- Highlights include
 - 1.97g/t Au over 9.45m including 31.86g/t over 0.45m
 - 2.45g/t Au over 4.1m including 16.68g/t over 0.3m
- Extends over 360m strike and remains open to the north and south
- Follow up drilling planned





GOLDEN GLOVE DISCOVERY

- Discovered by Prospecting
- Visible Gold in Outcrop of Quartz Vein

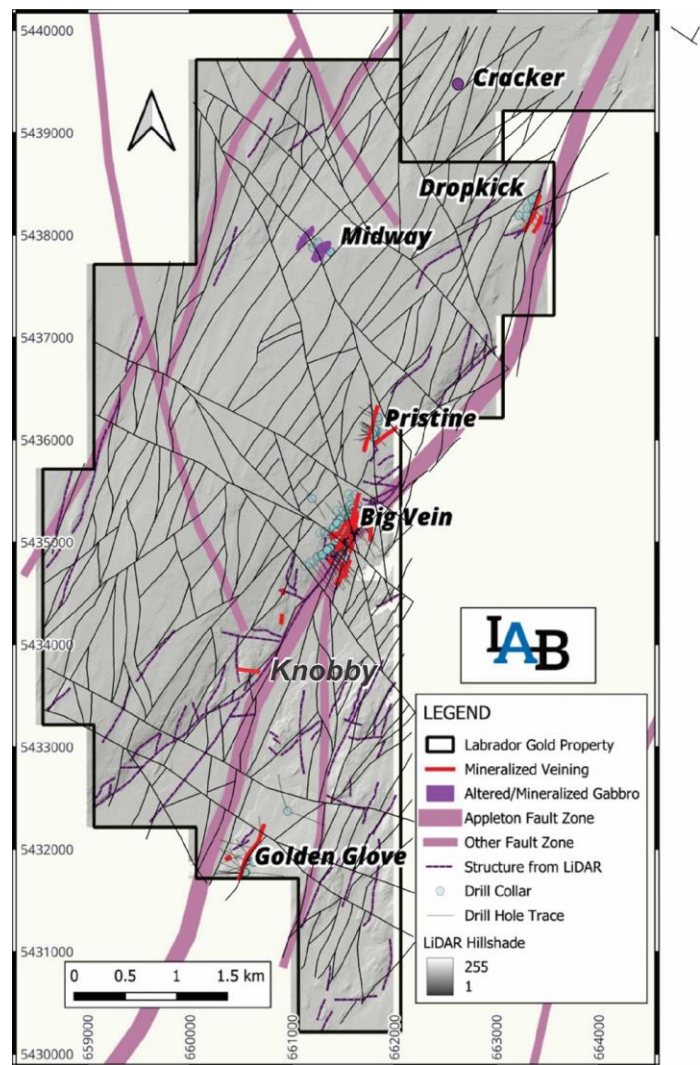
Sample #	Sample Type	Rock Type	Au (g/t)
853601	Grab	Quartz Vein with visible gold	479.51
709253	Grab	Quartz vein with visible gold	338.08
709252	Grab	Quartz vein with visible gold	194.28
709251	Grab	Quartz vein with visible gold	193.69
853603	Grab	Quartz Vein with visible gold	114.72
709009	Grab	Quartz vein with py, apy and cpy	83.61





KNOBBY OCCURENCE

- The first indication of gold mineralization between Big Vein and Golden Glove along the Appleton Fault Zone
- Initial grab samples graded 47g/t, 2.7g/t and 29.19 g/t Au
- 3 parallel veins have been traced along an east-west strike for ~200m
- East-west orientation is similar to structures known to host high-grade gold in quartz veins elsewhere in the district



KNOBBY VEIN OUTCROPS



CURRENT TARGETS AREAS

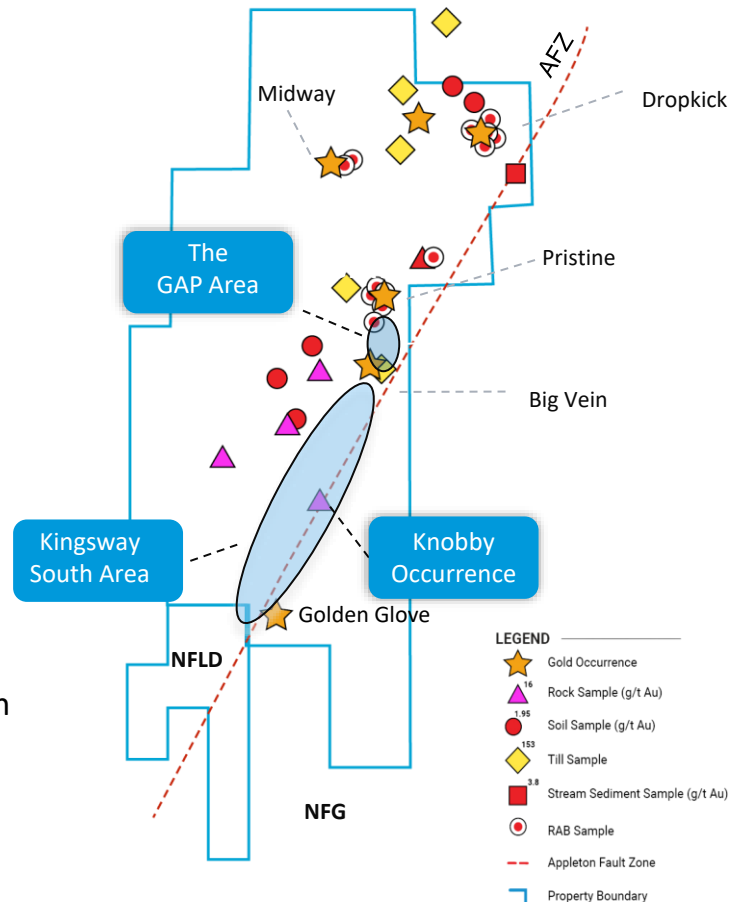
2 High priority targets areas for current drilling campaign

Kingsway South

- A 3km long target area spanning from Big Vein to the south boundary of Kingsway.
- Targets includes the Knobby occurrence where grab samples returned up to 47g/t Au

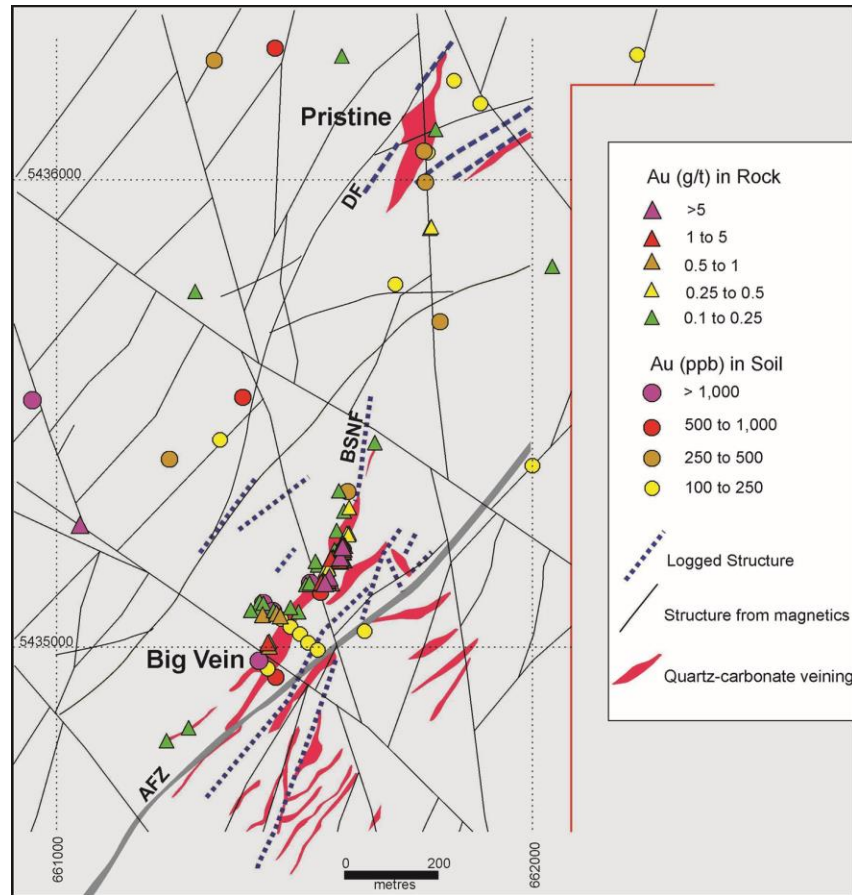
The GAP

- Located between Big Vein and the Pristine Targets where both targets remain open to northeast and southwest
- Area is ~700m along the Appleton Fault zone



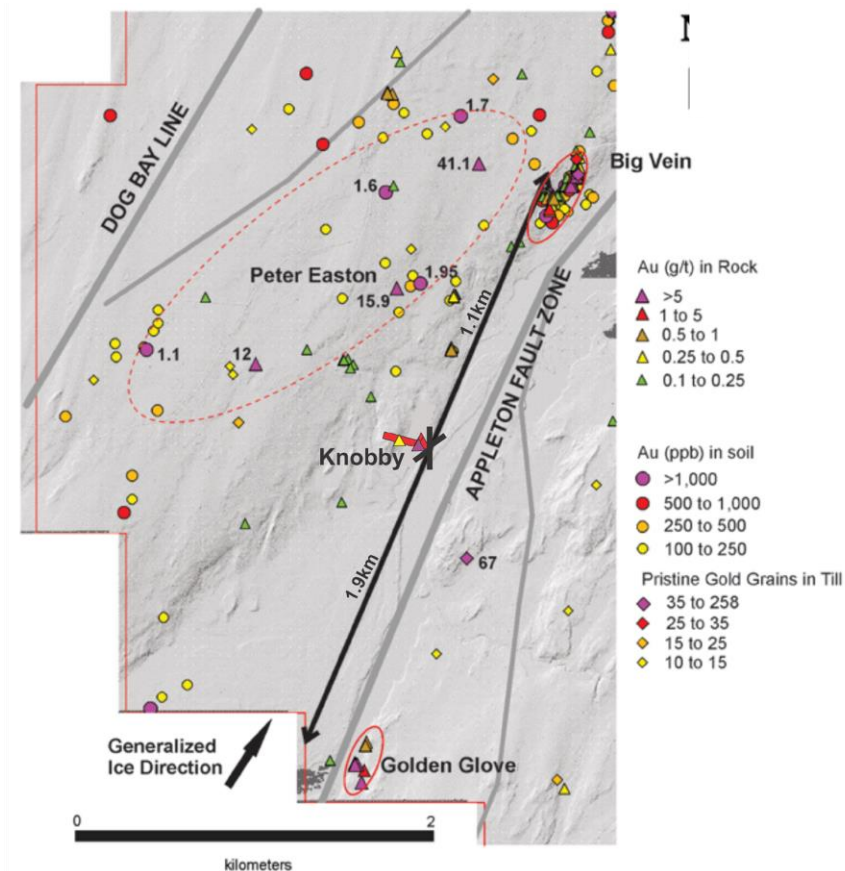
The GAP TARGET AREA

- Extends 700 metres west of the Appleton Fault Zone between Big Vein and Pristine
- Drilling from Big Vein will step out along the Black Shale North Fault, a NNE trending splay off the Appleton Fault
- Drilling from Pristine will step out to the southwest along the Disco Fault
- NE-SW and E-W trending interpreted structures will also be tested
- Drilling underway



KINGSWAY SOUTH TARGET AREA

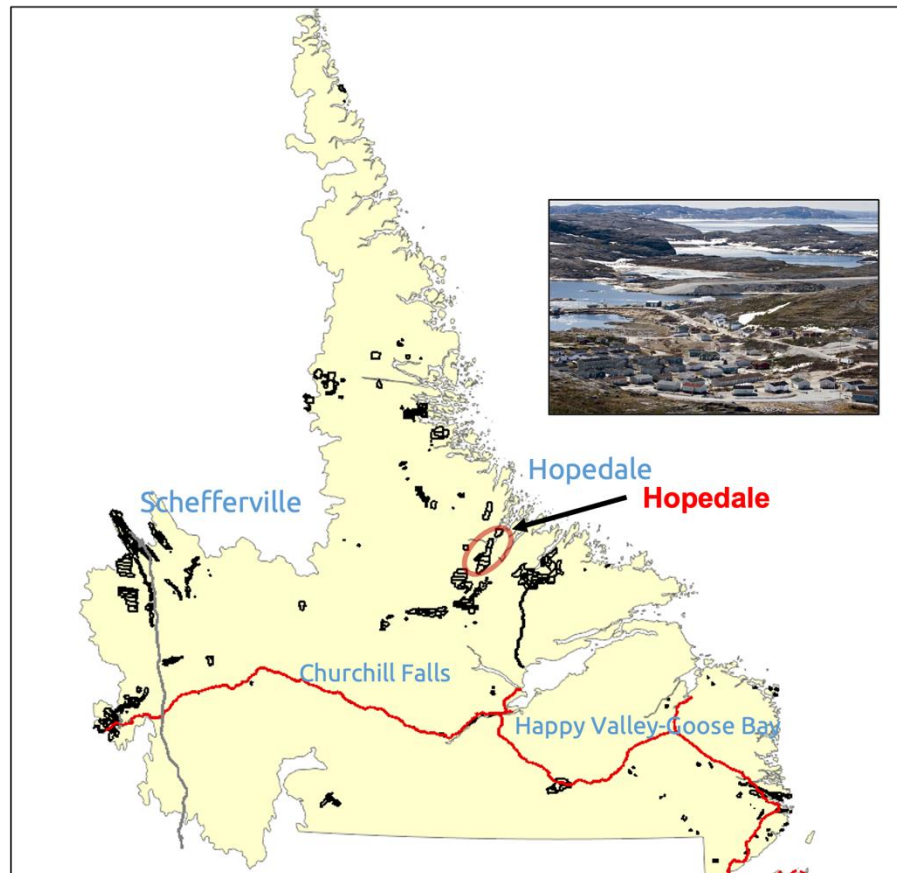
- Targeting the Big Vein-Golden Glove Corridor
- 3 kilometre section of the Appleton Fault Zone
- Grab samples collected from the Knobby vein outcrops returned gold values up to 47 g/t Au
- Initial drilling of the Knobby Vein currently underway





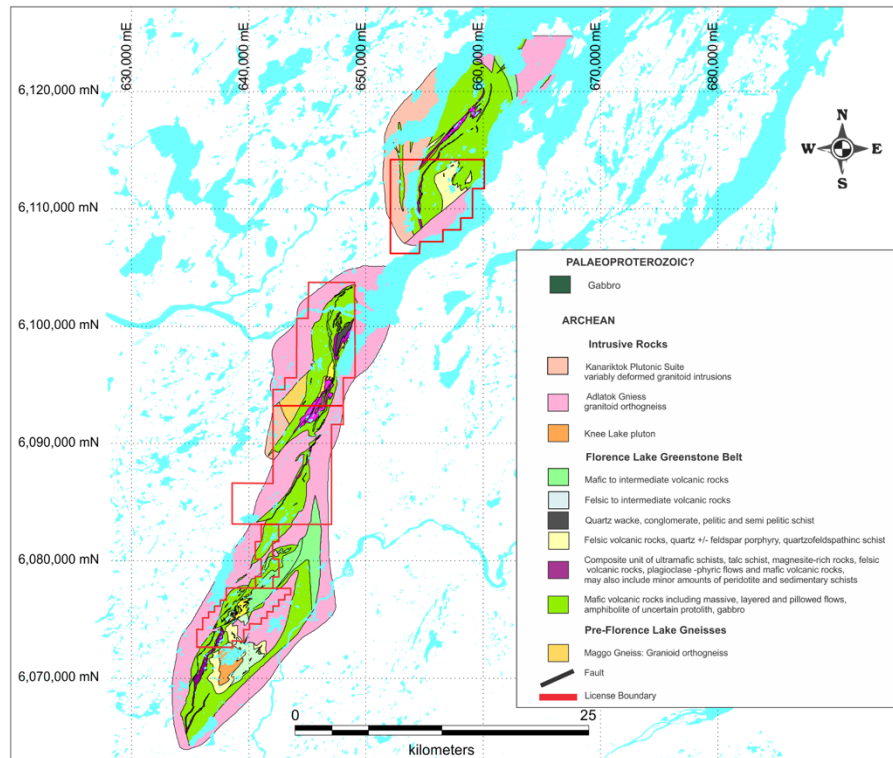
HOPEDALE PROJECT

- District Scale - Covers most of underexplored Florence Lake greenstone belt
- 3 years of exploration has outlined a three kilometre long mineralized trend of gold in rock and soil samples
- East end of property on tidewater 30km southwest of Hopedale Community
- Daily air service from Happy Valley-Goose Bay
- Targets: Greenstone hosted orogenic gold
Komatiite hosted nickel

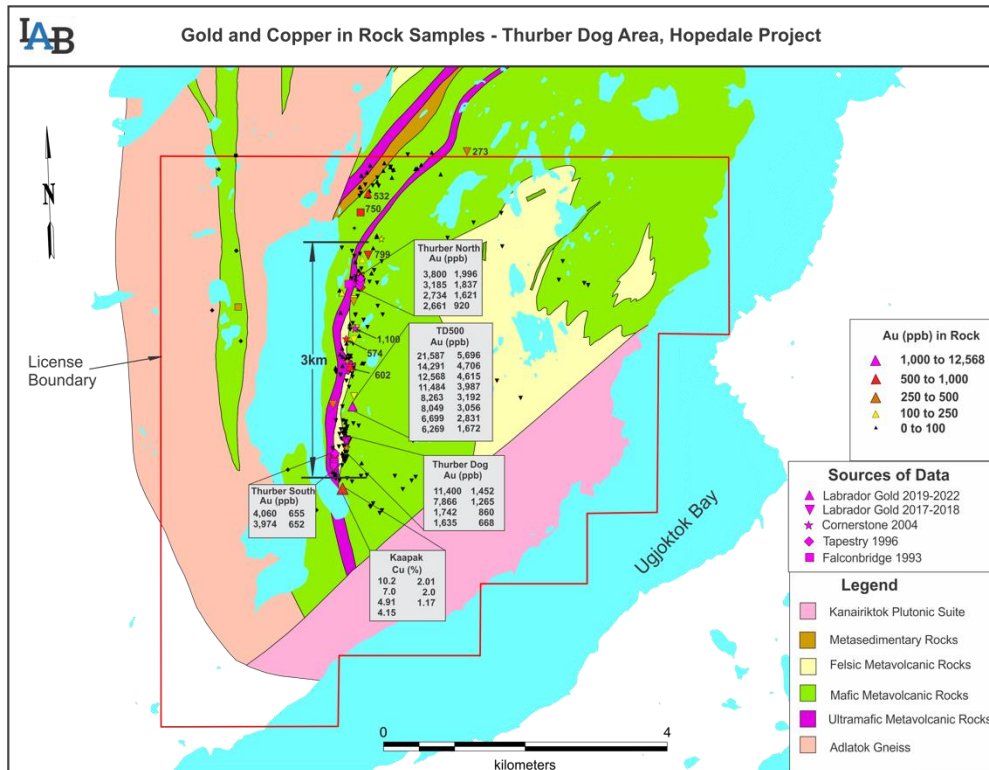


FLORENCE LAKE GREENSTONE BELT

- Licenses cover 43 kilometres of the Florence Lake Greenstone Belt
- Underexplored for Gold
- Greenstone Belts worldwide known to be prolific hosts of gold
- Copper and Nickel potential in addition to gold

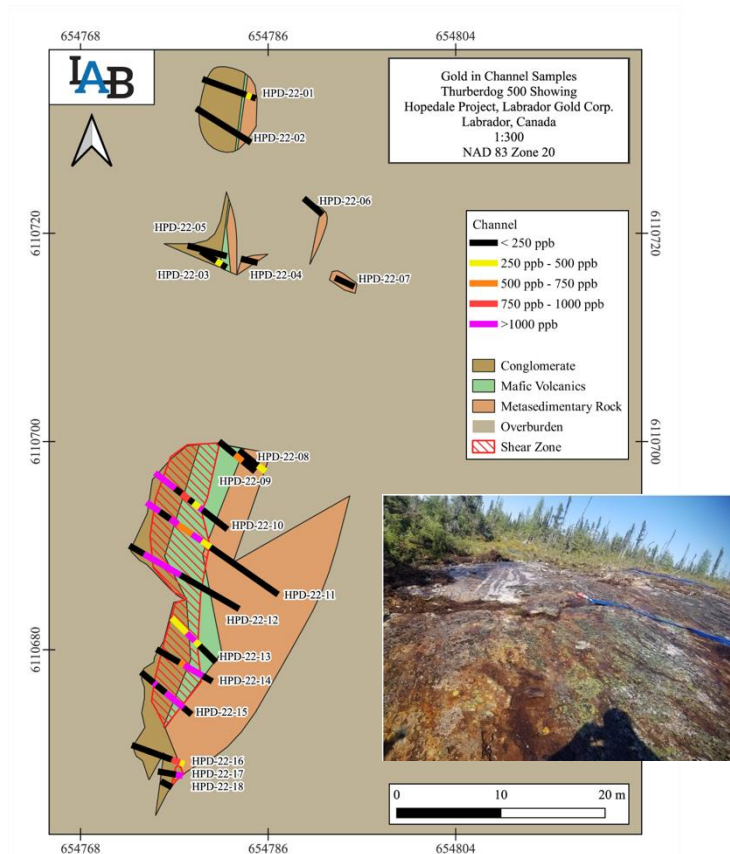


- 3km long strike length of gold mineralization in rock and soil
- 4 significant gold occurrences
 - Thurber North up to 3.8 g/t Au
 - TD500 up to 21.59 g/t Au
 - Thurber Dog up to 11.4 g/t Au
 - Thurber South up to 4.1 g/t Au
- Significant copper- silver occurrence
 - 1.08 to 10.2% Cu
 - 0.2 to 9.2 g/t Ag



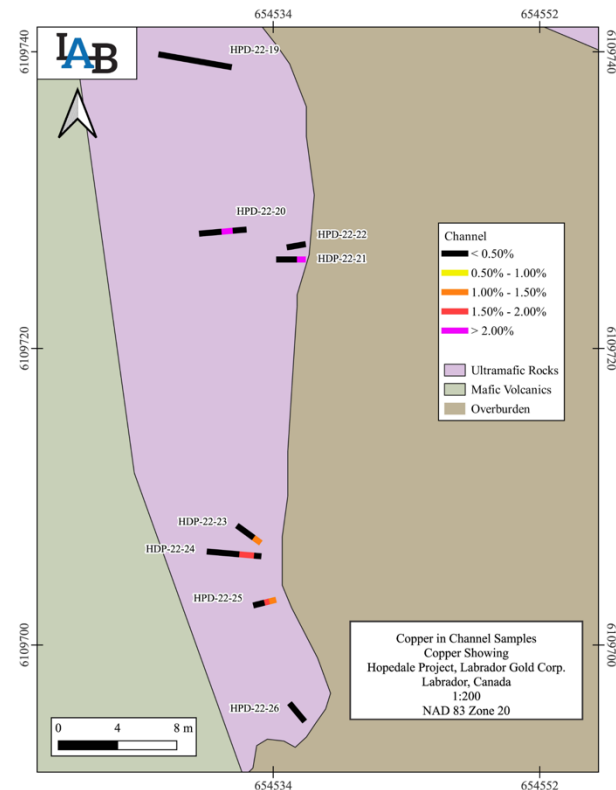
TD 500 CHANNEL SAMPLING

Channel ID	from (m)	to (m)	width (m)	Au(g/t)
HPD-22-10	3.03	8.2	5.17	2.91
including	6.37	8.2	1.83	7.21
HPD-22-11	7.92	14.8	6.88	2.35
including	8.96	10.08	1.12	3.42
and	11.73	12.65	0.92	4.1
and	13.87	14.8	0.93	7.56
HPD-22-12	6.5	11.54	5.04	4.23
including	6.6	9.9	3.3	6.08
including	7.87	8.95	1.08	7.74
HPD-22-13	2.86	3.94	1.08	1.49
HPD-22-14	1.05	3.12	2.07	2.93
HPD-22-15	1.02	5.72	4.7	1.59
including	1.02	3.25	2.23	3.05
including	2.01	3.25	1.24	4.21
HPD-22-17	0	0.65	0.65	8.14



KAPAAK CHANNEL SAMPLING

Channel ID	from (m)	to (m)	width (m)	Cu (%)
HPD-22-20	0.94	1.70	0.76	3.31
HPD-22-21	0.00	0.60	0.60	2.40
HPD-22-23	0.00	0.60	0.60	1.08
HPD-22-24	0.00	1.50	1.50	1.09
including	0.50	1.50	1.00	1.55
HPD-22-25	0.00	1.19	1.19	1.14
including	0.00	0.81	0.81	1.48
and	0.48	0.81	0.33	1.59

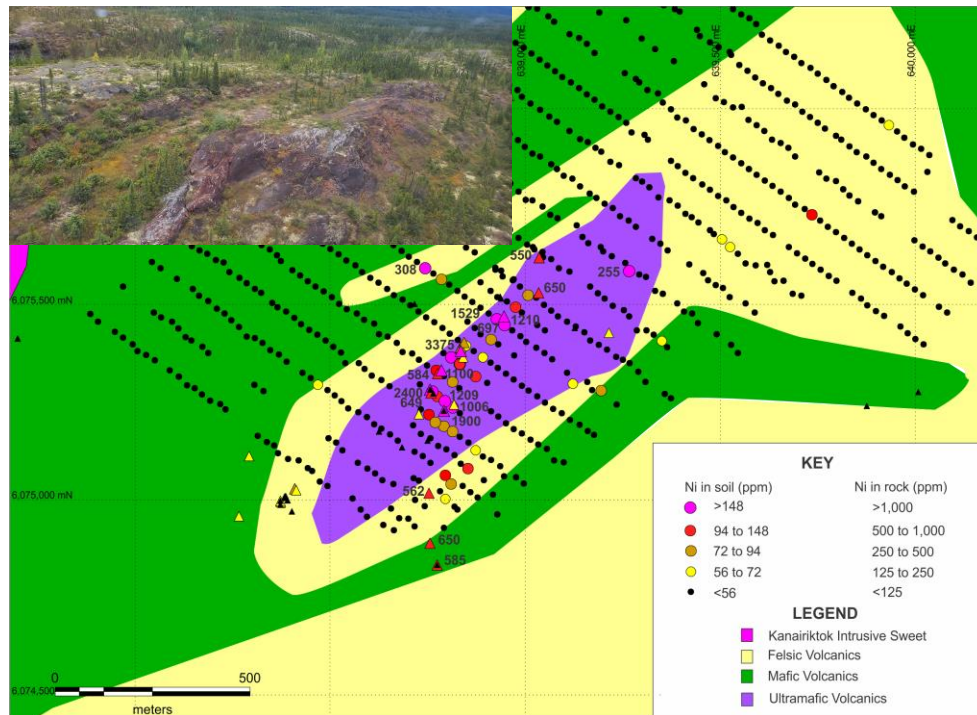




RUSTY RIDGE NICKEL ANOMALY

- Anomalous nickel, copper and cobalt in rock and soil samples
- occurs in altered ultramafic rocks over a 1.2km strike length

	Rock	Soil
Nickel (%)	0.34	0.15
Copper (%)	0.42	0.02
Cobalt (ppm)	134	152





KEY TAKEAWAYS

- Continuing to make new discoveries after three years of work at Kingsway
- Only 1.4km of 12km of the prospective Appleton Fault Zone drilled
- Drilling underway and planned for four areas along the Appleton Fault Zone
- Approximately 13,000m of drilling remaining of the 100,000m planned program
- District scale Hopedale Project continues to show excellent potential for gold and critical metals nickel and copper
- Both projects fully funded from approximately \$9 million cash on hand



ACKNOWLEDGEMENTS

FIELD CREW AND SUPPORT STAFF

Alison Barkhouse, Troy Boon, John Clarke,
Tyler Dyke, Bronson Gunn, Bailey Malay,
Nicholas Maddock, Hazel Mhoshiwa,
Louise Moyles, Dwayne Pittman, Kristen Storey,

Newfoundland and Labrador Ministry of Natural Resources' Junior Exploration Assistance (JEA) Program for its financial support for exploration of the Hopedale property.



CONTACT US



Roger Moss, President and CEO



Phone: +1-416-704-8291



E-mail: rmoss@labradorgold.com



Website: www.labradorgold.com



Twitter: @LabGoldCorp

TSX-V: LAB

FNR: 2N6

OTCQX: NKOSF