



# KINGSWAY GOLD PROJECT TWO YEARS AND COUNTING

CORPORATE UPDATE  
Spring 2023

TSX-V: LAB

FNR: 2N6

OTCQX: NKOSF

# DISCLAIMER

Statements contained in this presentation that are not historical facts may be forward-looking statements within the meaning of the US Private Securities Litigation Reform Act of 1995 and forward looking information under similar Canadian legislation (collectively, "Forward Looking Information"). Forward Looking Information includes, but is not limited to, statements regarding the Company's strategic plans, property search and evaluation plans, estimated levels of mineral reserves, mineral resources and expenditures, success of exploration activities, and acquisition targets and commitments. Forward Looking Information is based on information currently available to the Company and the Company provides no assurance that actual results will meet management's expectations. In certain cases, Forward Looking Information may be identified by such terms as "anticipates", "believes", "could", "estimates", "expects", "may", "shall", "will", or "would", and is based on certain factors and assumptions regarding, among other things, the estimation of mineral resources, the realization of resource estimates, the timing and amount of future exploration and development expenditures, the availability of necessary financing and materials to continue to explore and develop properties, the receipt of necessary regulatory approvals, and assumptions with respect to currency fluctuations, environmental risks, title disputes or claims, and other similar matters. While the Company considers these assumptions to be reasonable based on information currently available to it, they may prove to be incorrect. Forward Looking Information involves known and unknown risks, uncertainties and other factors which may cause the actual results, performance or achievements of the Company to be materially different from any future results, performance or achievements expressed or implied by the Forward Looking Information. Such factors include risks inherent in the exploration and development of mineral deposits, risks relating to variations in mineral resources, grade or recovery rates resulting from current exploration and development activities, risks relating to changes in metal prices and the worldwide demand for and supply of metals, risks related to increased competition in the mining industry generally, risks related to current global financial conditions, uncertainties inherent in the estimation of mineral resources, access and supply risks, reliance on key personnel, operational risks inherent in the conduct of mining activities, risk of delays or increased costs during the development process and relating to the acquisition of licenses and permits, regulatory risks, risks related to disputes concerning property titles and interest, and environmental risks. This list is not exhaustive of the factors that may affect any of the Company's Forward Looking Information. These and other factors should be considered carefully and readers should not place undue reliance on the Company's Forward Looking Information. The Company does not undertake to update any Forward Looking Information or statements that may be made from time to time by the Company or on its behalf, except in accordance with applicable securities laws. Note that mineralization on adjacent properties in similar rocks, and assays based on historical work in surface sampling and drilling, are not representative of the mineralization on the property, and have not been verified and should not be relied upon.

The technical content of this presentation has been prepared by Roger Moss, Ph.D., P.Geo. the company's qualified person.





# LABRADOR GOLD – IN THE HEART OF A NEW GOLD CAMP



Flagship Kingsway gold project located in the Gander Gold District



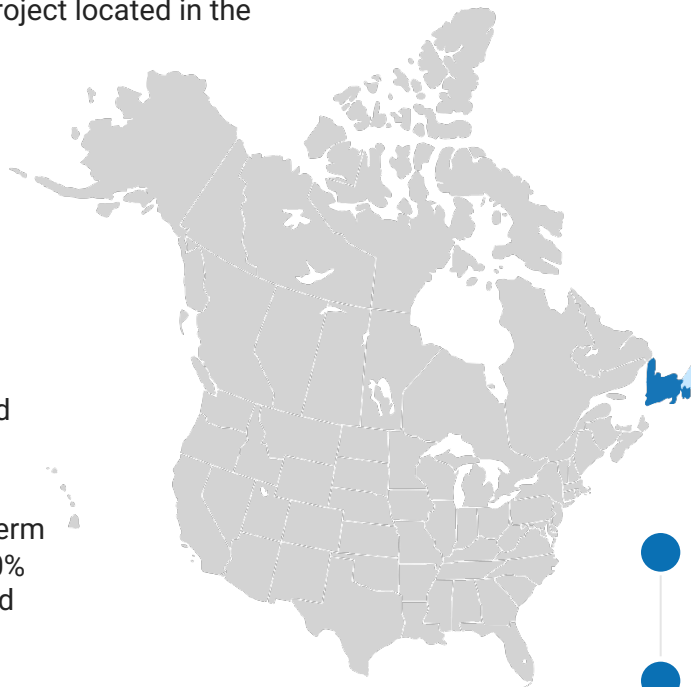
Politically stable jurisdiction supportive of mineral exploration



Experienced exploration team with success in finding and advancing gold deposits



Strong support from long-term shareholders including ~40% from quality institutions and insiders



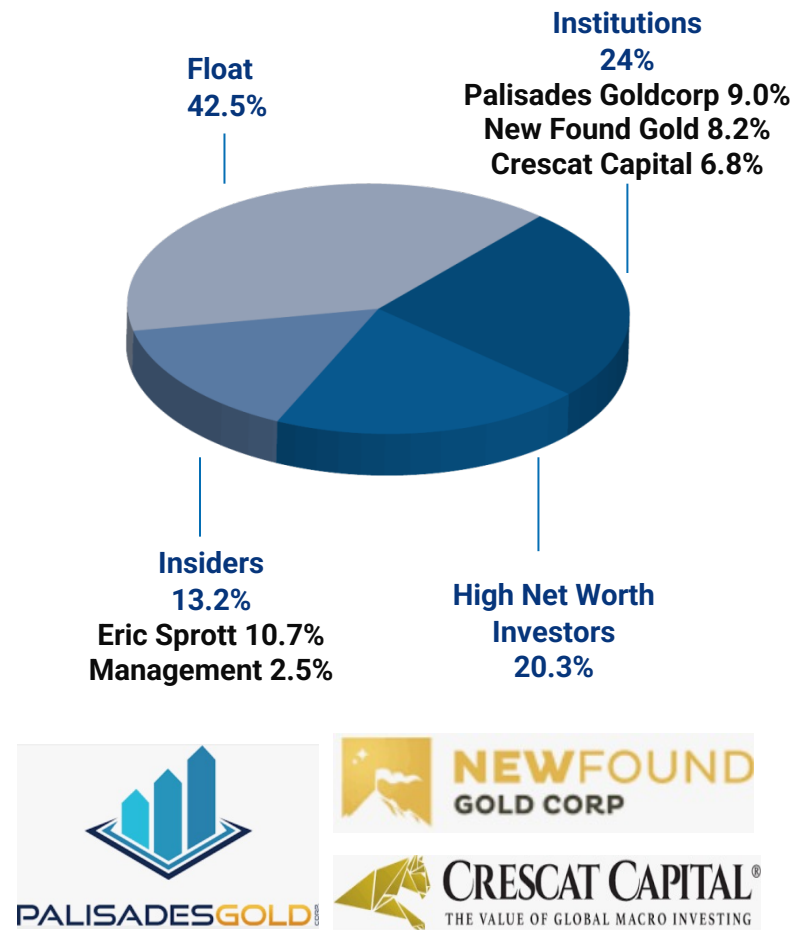
Ongoing 100,000m drill program at the Kingsway Quartz Vein Corridor



**Strong cash position** –C\$16M (no debt)

# SHARE STRUCTURE

Ticker(s)	TSX-V: LAB FSE: 2N6 OTC: NKOSF
Share Price – April 27 <sup>th</sup>	\$0.20
Market Capitalization	~\$33.15 million
Issued and Outstanding Shares	170.0M
Warrants	15.3M
Options	4.8M
Fully Diluted	190.1M
Cash	~\$16M
Insider Ownership	13.2%
Eric Sprott	10.7%
Management	2.5%



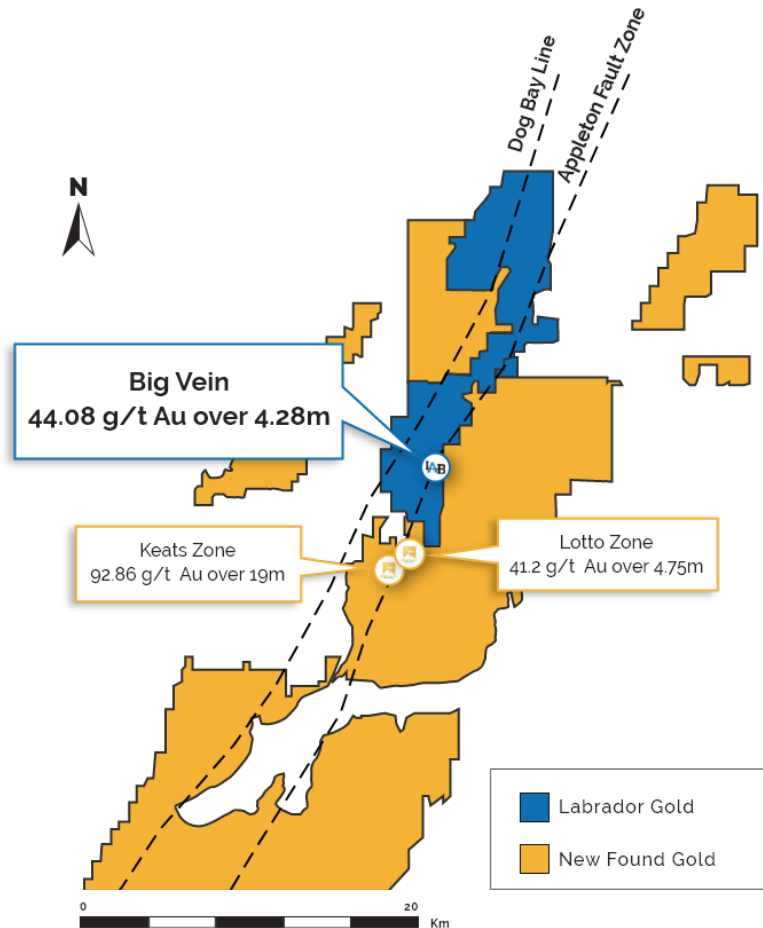




# OUR FLAGSHIP PROJECT

## Kingsway Property

- Consists of four licenses covering 77 square kilometers
- Licenses cover approximately 20 kilometers of strike length of two crustal scale faults, the Dog Bay Line (8km) and the Appleton Fault Zone (12km)
- Excellent infrastructure - 18km from Gander, road accessible, nearby electricity and plentiful water
- **Target:** Orogenic gold associated with major crustal structures and associated faults

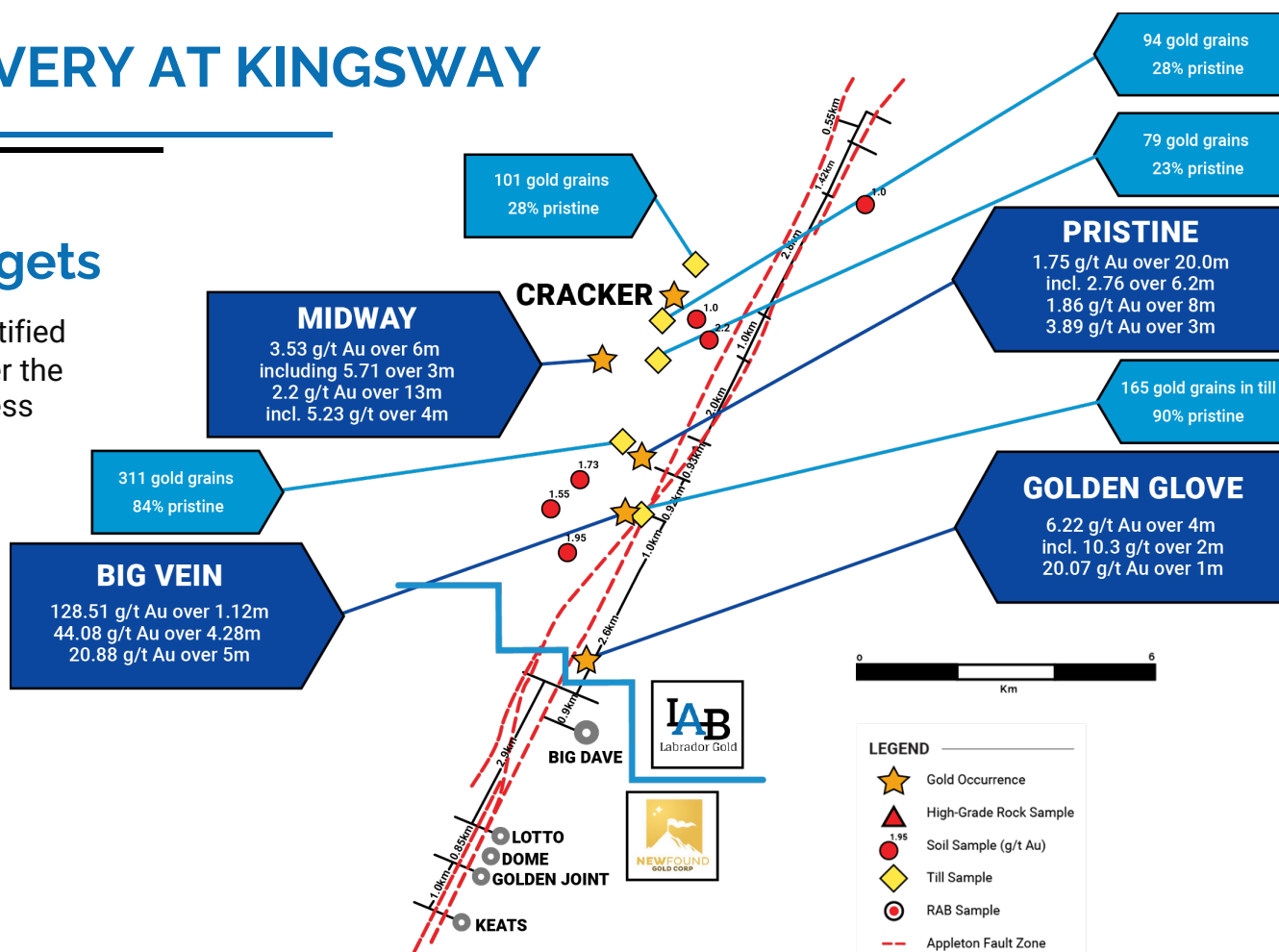


# GOLD DISCOVERY AT KINGSWAY

4 of 5

## Discoveries vs. Targets

- Four gold occurrences identified and successfully drilled over the past 18 months -80% success rate
- Many more targets developing along the Appleton Fault
- Big Vein discovery now extends to ~590m along strike and is open in both directions.



# EXPLORATION AT KINGSWAY



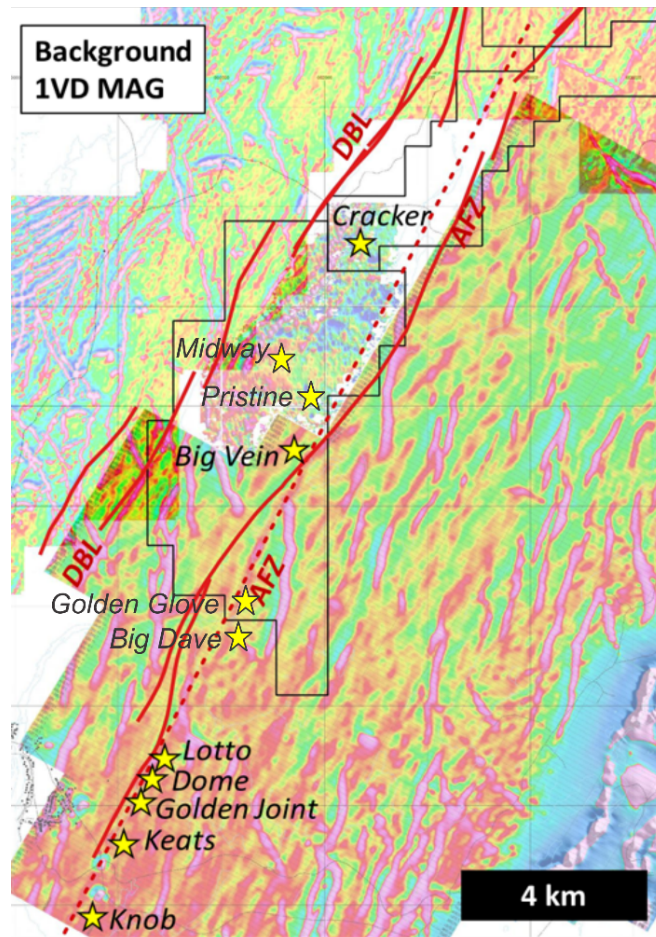




# KINGSWAY STRUCTURES – HIGHWAYS FOR GOLD BEARING FLUIDS

## Primary Structures

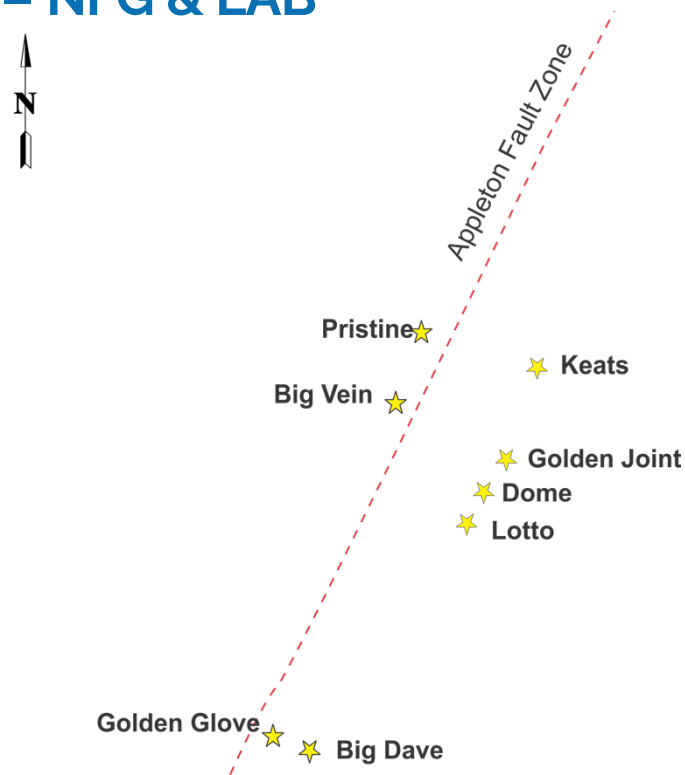
- NE-trending Dog Bay Line (DBL) and Appleton Fault Zone (AFZ)
- Knob, Keats, Lotto and Golden Glove interpreted to be on E side of AFZ with Big Vein and Pristine interpreted to be on the W
- Numerous gold occurrences associated with the Appleton Fault Zone
- Kingsway Licenses cover 12km of the Appleton Fault Zone





# GOLD OCCURRENCE COMPARISON – NFG & LAB

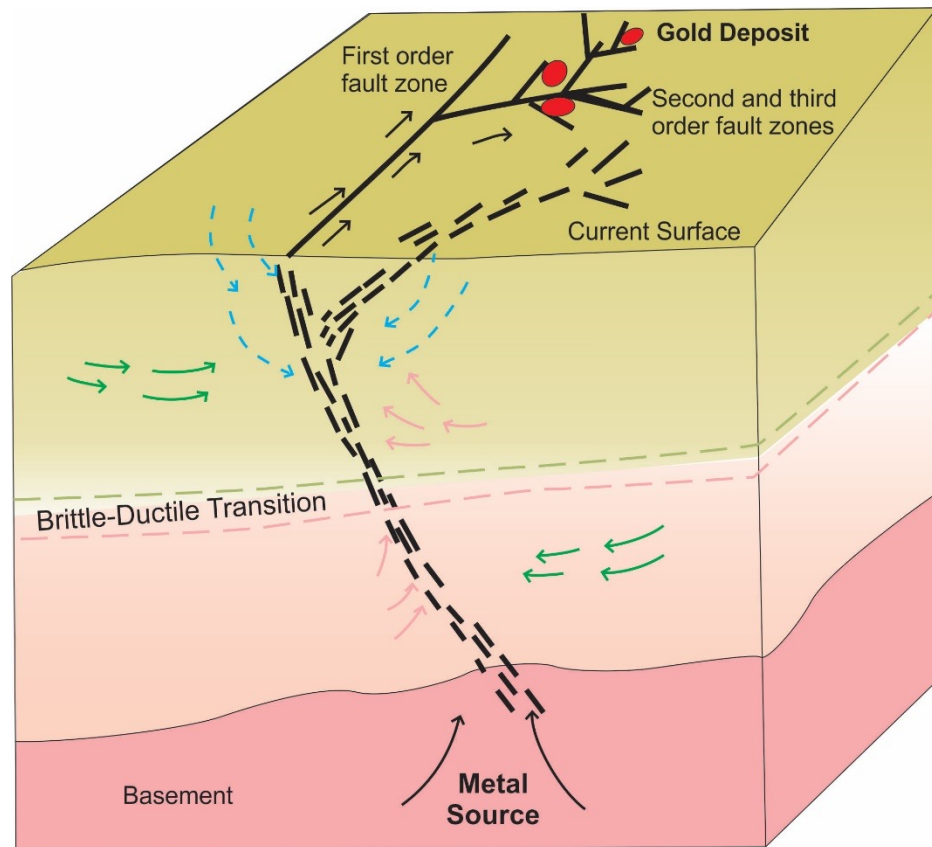
- Strikingly similar 4.6km strike length of occurrences on Queensway North and Kingsway South
- More occurrences defined on Queensway North
- Further Potential between Pristine and Golden Glove





# KINGSWAY STRUCTURES – LOCALIZE GOLD DEPOSITION

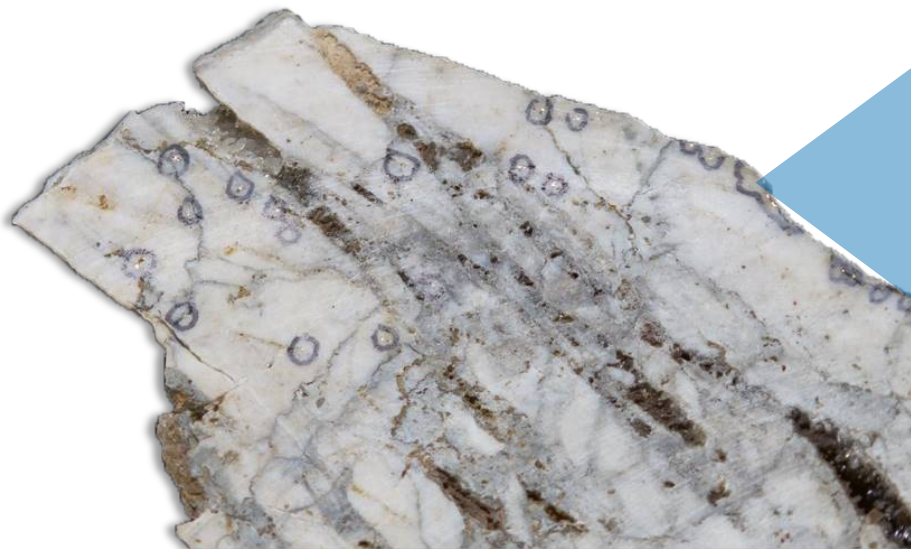
- Major structures are important for localizing gold deposition
- Hot water carries gold in solution up major structures like the Appleton Fault Zone
- This gold in solution migrates out through smaller second and third order structures to the sites of eventual deposition



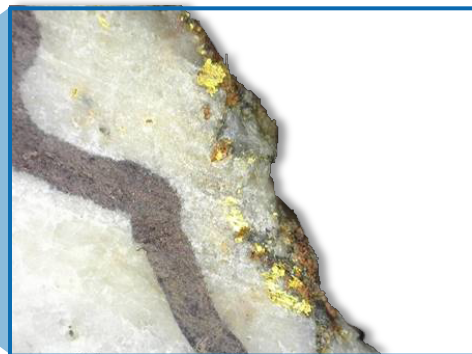




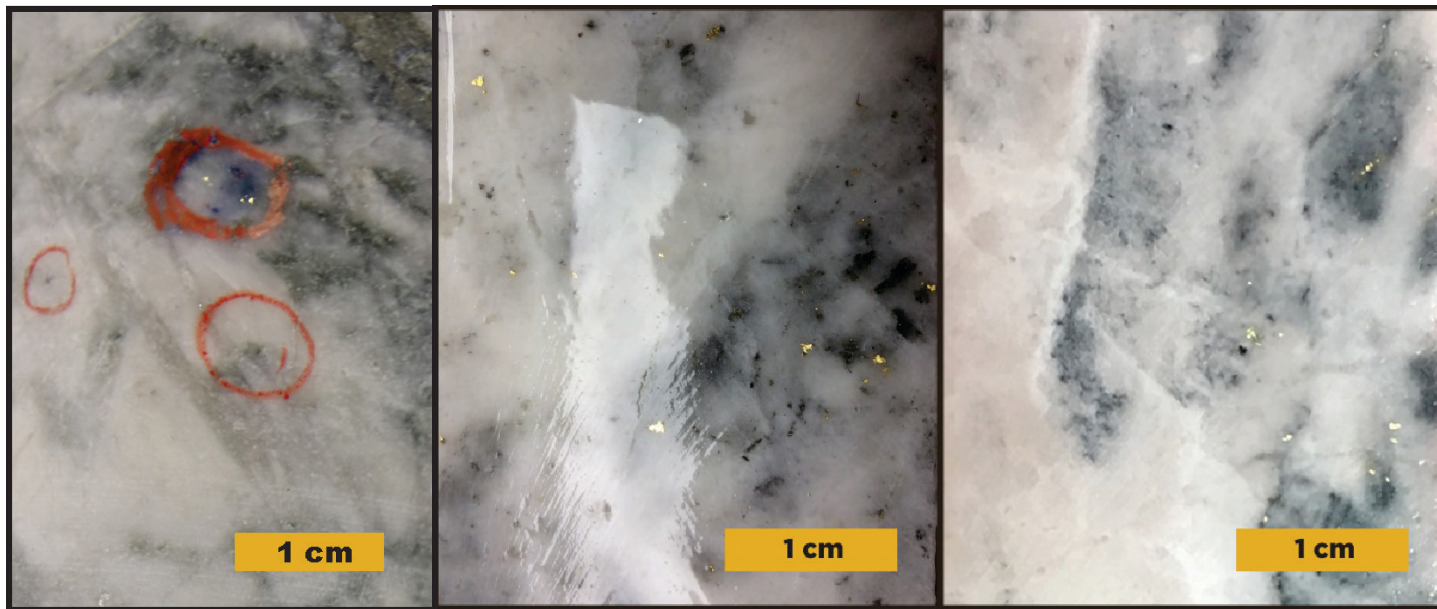
# KINGSWAY – BIG VEIN VISIBLE GOLD DISCOVERY



Assayed 1,065 g/t Au



# APPLETON FAULT – EPIZONAL GOLD MINERALIZATION



Kingsway

Queensway

Fosterville



# INITIAL DRILL RESULTS

## Big Vein

- 44.08g/t Au over 4.28m
- 284.1 g/t Au over 0.58m
- 20.88 g/t Au over 5m
- 6.08 g/t Au over 19m
- 128.51 g/t Au over 1.12m
- 50.52 g/t Au over 2m
- 276.56 g/t Au over 0.5m

## Golden Glove

- 6.22g/t Au over 4m

## Pristine

- 2.03g/t Au over 16.2m
- 3.89g/t Au over 3.0m

## Midway

- 3.53 g/t Au over 6m
- 2.2 g/t over 13m

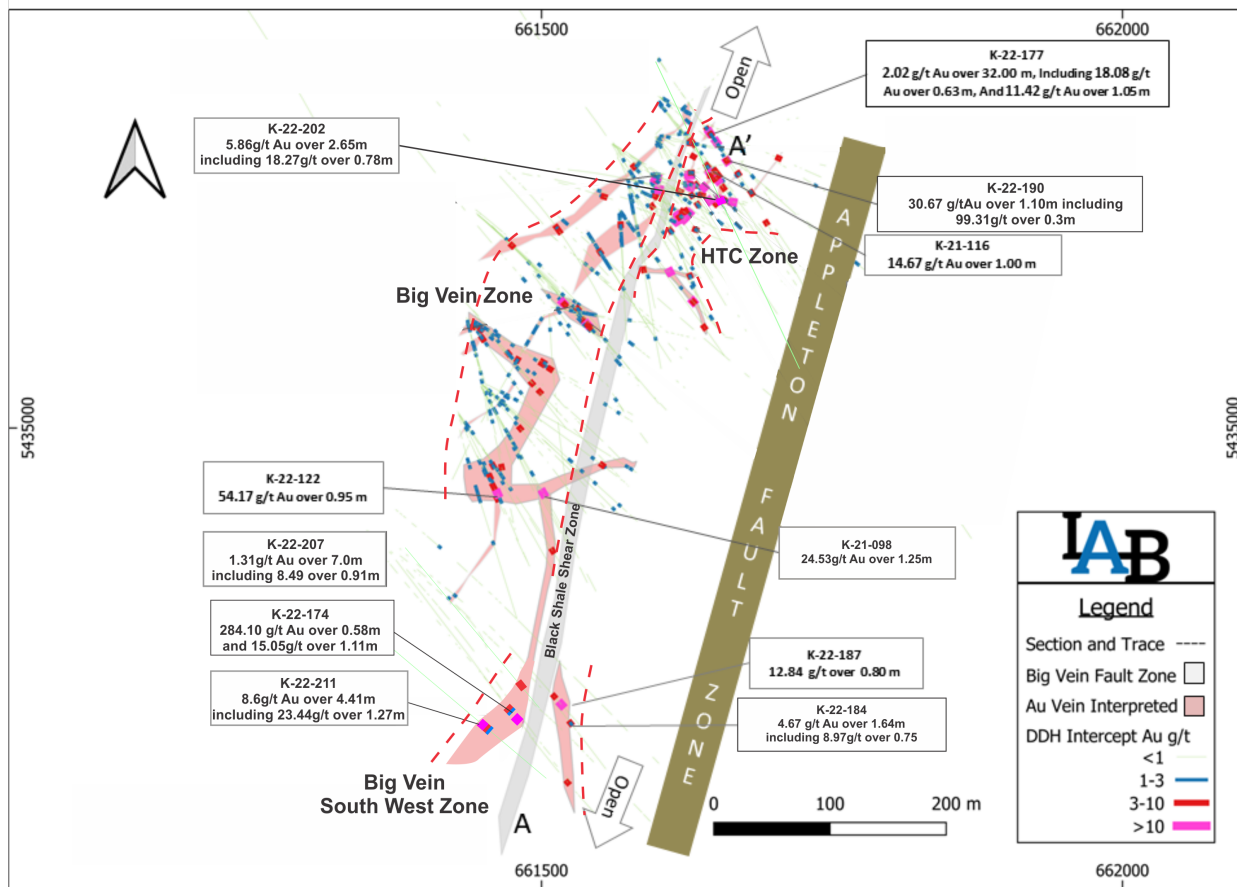


44.08g/t Au over 4.28m at Big Vein



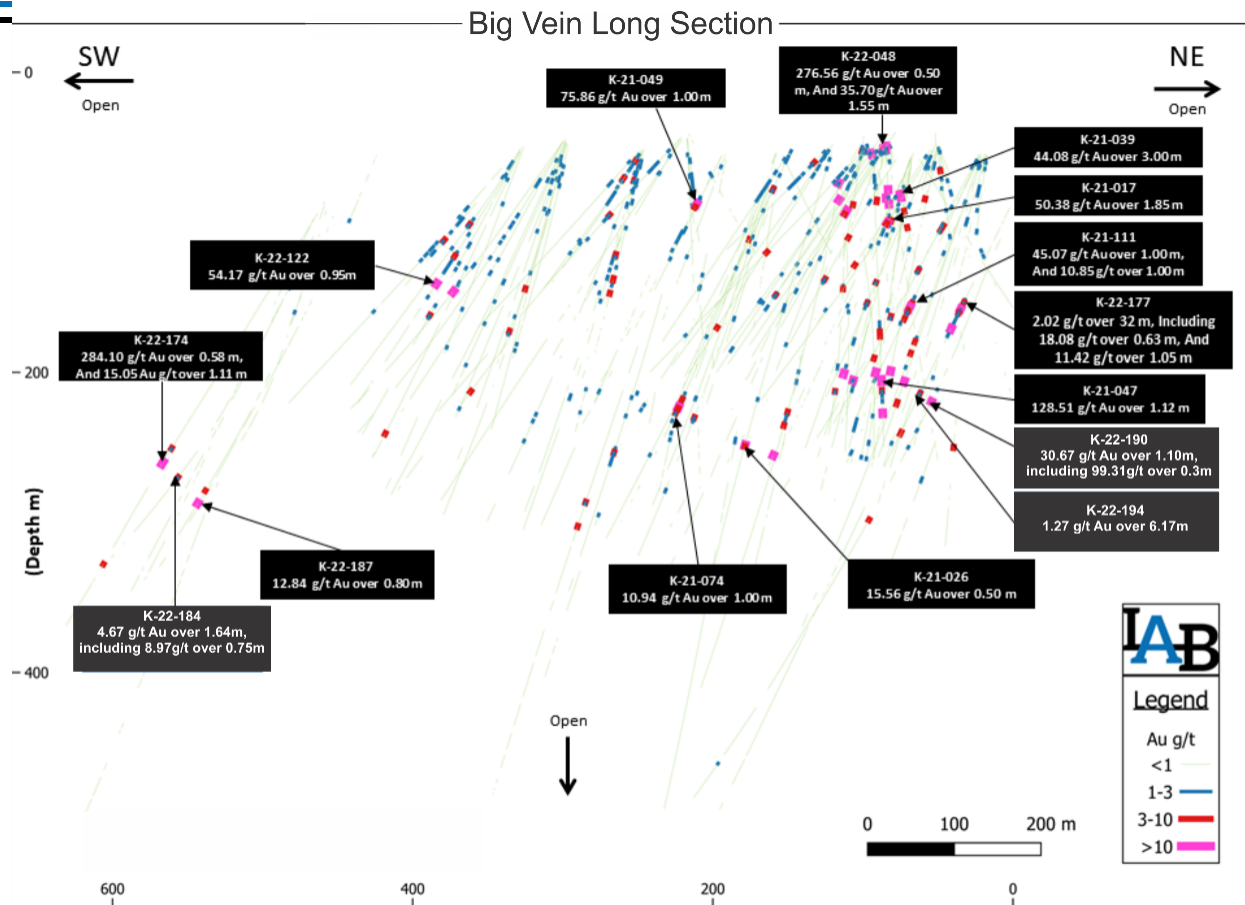


# BIG VEIN – PLAN MAP





# BIG VEIN – LONG SECTION





# GOLDEN GLOVE DISCOVERY

- Discovered by Prospecting
- Visible Gold in Outcrop of Quartz Vein

Sample #	Sample Type	Rock Type	Au (g/t)
853601	Grab	Quartz Vein with visible gold	479.51
709253	Grab	Quartz vein with visible gold	338.08
709252	Grab	Quartz vein with visible gold	194.28
709251	Grab	Quartz vein with visible gold	193.69
853603	Grab	Quartz Vein with visible gold	114.72
709009	Grab	Quartz vein with py, apy and cpy	83.61





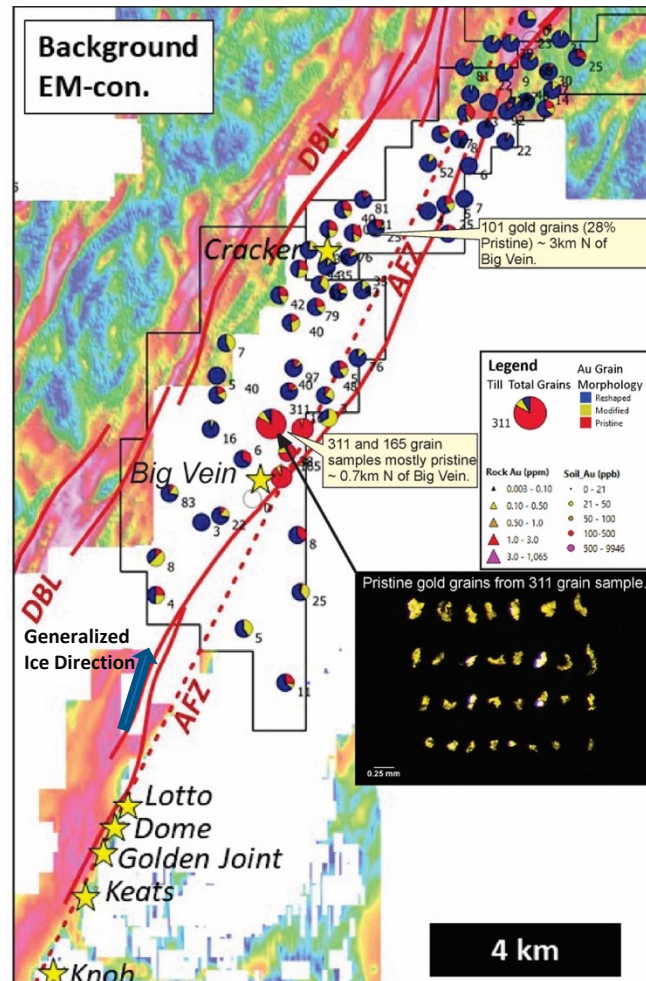
# GOLDEN GLOVE – BIG VEIN COMPARISON

Golden Glove - Grab	Big Vein - Grab	Big Vein - Drill
Au (g/t)	Au (g/t)	Au (g/t)
<b>479</b>	<b>1,065</b>	<b>276 g/t over 0.5m</b>
<b>338</b>	<b>185</b>	<b>160 g/t over 0.55m</b>
<b>194</b>	<b>66</b>	<b>128 g/t over 1.12m</b>
<b>194</b>	<b>38</b>	<b>96 g/t over 1.03m</b>



# PRISTINE DISCOVERY

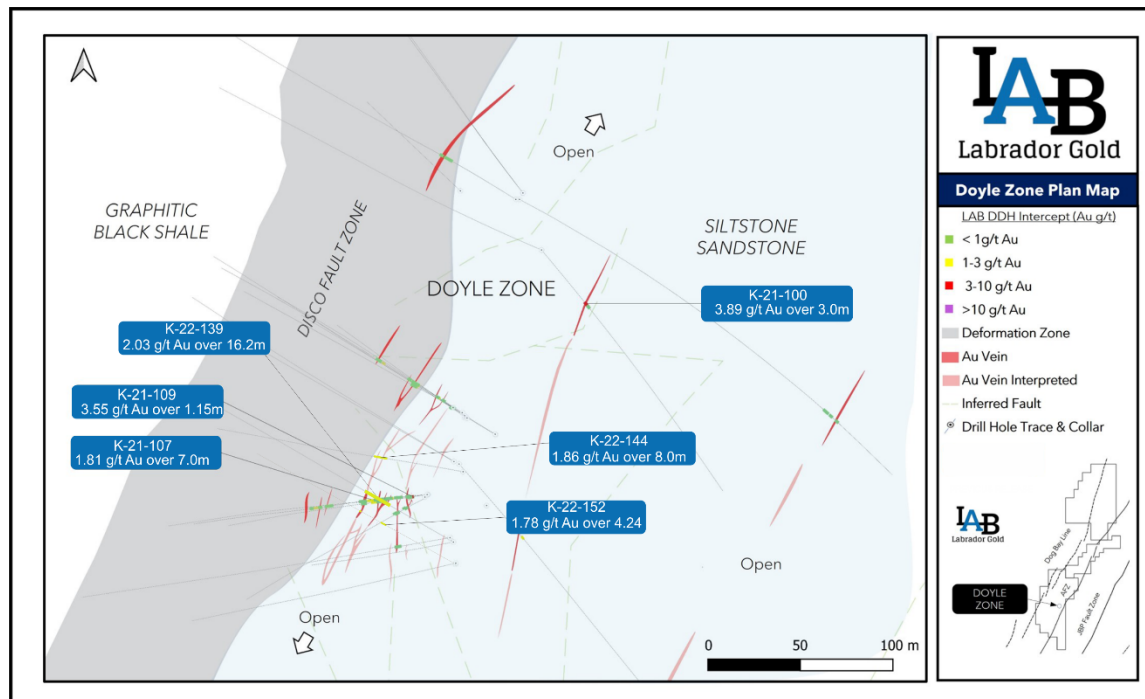
- A blind discovery
- Made by following up results from approximately 90 till samples
- Inset shows pristine gold grains from a 311-grain sample approximately 700m NE (down Ice) of Big Vein
- RAB drilling approximately 100m up ice from a 165-grain sample with 95% pristine grains intersected between 1.4g/t and 2.5g/t Au
- Follow up diamond drilling intersected significant near surface gold





# PRISTINE – DOYLE ZONE

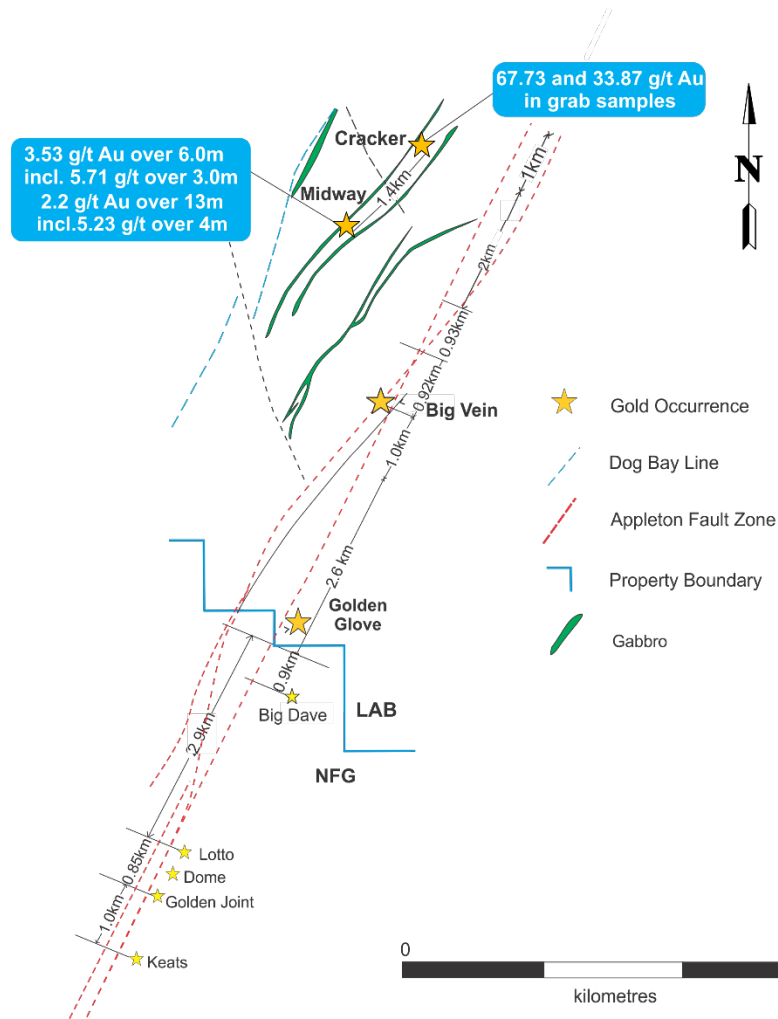
- First six holes all intersected near surface gold mineralization
- Including:
  - K-22-144: 1.67g/t Au over 19.0m
  - K-22-139: 2.03g/t Au over 16.2m
  - K-21-109: 3.55 g/t Au over 1.15m
  - K-21-100 3.89 g/t Au over 3m
- Very similar stratigraphy to Big Vein
- Mineralization stretches over approximately 200m and remains open to NE and SW





# MIDWAY DISCOVERY

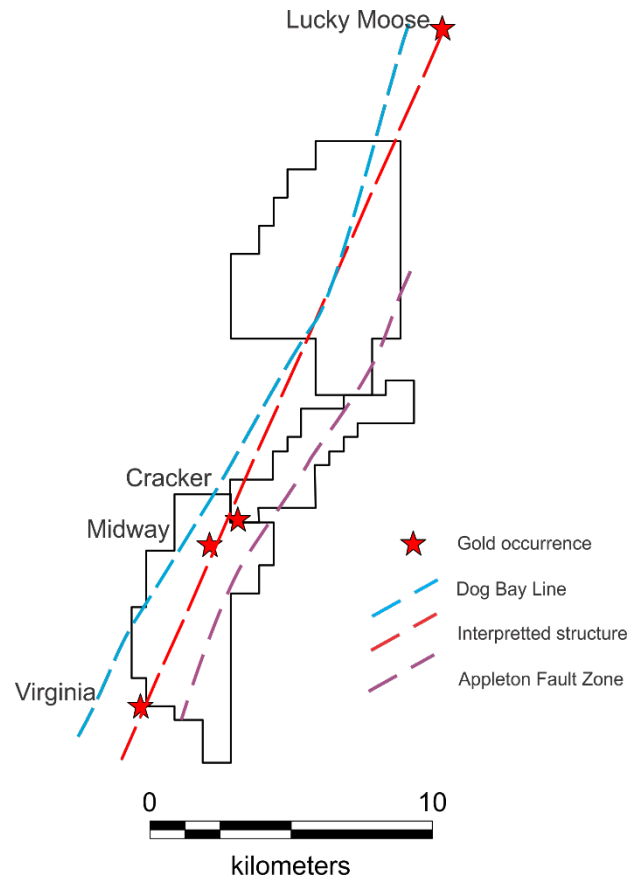
- Near surface intercepts (~ 50m deep)
- 3.53 g/t Au over 6.0m incl. 5.71 g/t over 3.0m  
2.2 g/t Au over 13m incl. 5.23 g/t over 4m in altered gabbro
- Strong quartz-carbonate and potassic alteration
- Mineralization associated with disseminated pyrite and arsenopyrite
- Different mineralized system to Big Vein, Pristine and Golden Glove
- Potential for expansion along strike to the northeast and southwest





# GABBRO TREND POTENTIAL

- Four known occurrences of gold in gabbro over a 25km trend – “Gabbro Trend”
- Likely associated with a major NE-SW trending structure in between the Appleton Fault Zone and the Dog Bay Line
- Approximately 20km of “Gabbro Trend” covered by Kingsway Property

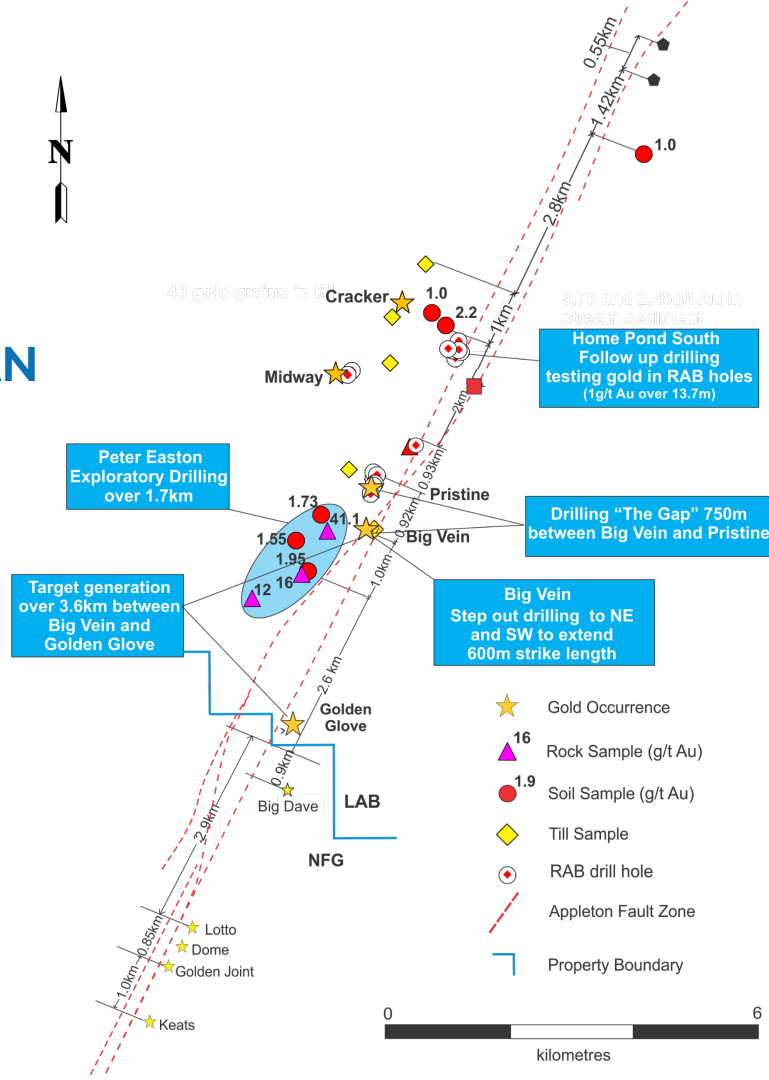






## 2023 EXPLORATION PLAN

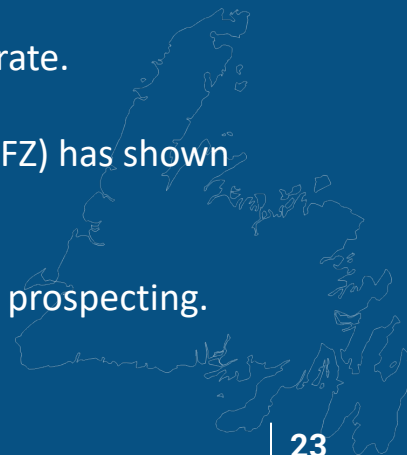
### Targeting 7.4 km of the Appleton Fault Zone





# KEY TAKEAWAYS

- Approximately \$16 million cash, with no debt.
- Fully funded 2023 exploration program including targeting 7.4km of the Appleton Fault Zone.
- Approximately 32,000m of drilling remaining of the 100,000m planned program.
- Key shareholders include Eric Sprott, New Found Gold, Palisades Goldcorp and Crescat Capital.
- 4 of 5 grassroots targets drilled so far have shown gold discoveries – 80% success rate.
- Structures are important for localizing gold mineralization. Appleton Fault Zone (AFZ) has shown numerous gold occurrences.
- Prospecting still works in Newfoundland! Two of the four gold showings found by prospecting.





## ACKNOWLEDGEMENTS

Newfoundland and Labrador Ministry of Natural Resources' Junior Exploration Assistance (JEA) Program for its financial support for exploration of the Kingsway property.





## CONTACT US



**Roger Moss, President and CEO**



**Phone:** +1-416-704-8291



**E-mail:** [rmoss@labradorgold.com](mailto:rmoss@labradorgold.com)



**Website:** [www.labradorgold.com](http://www.labradorgold.com)



**Twitter:** @LabGoldCorp

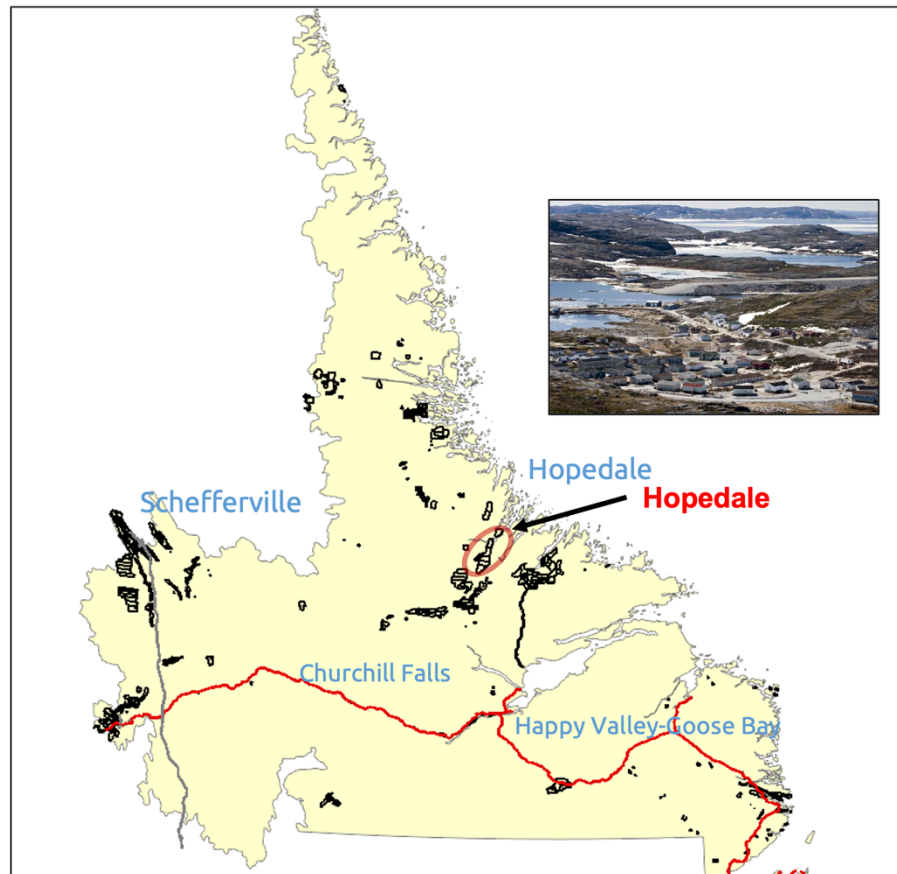
TSX-V: LAB

FNR: 2N6

OTCQX: NKOSF

# HOPEDALE PROJECT

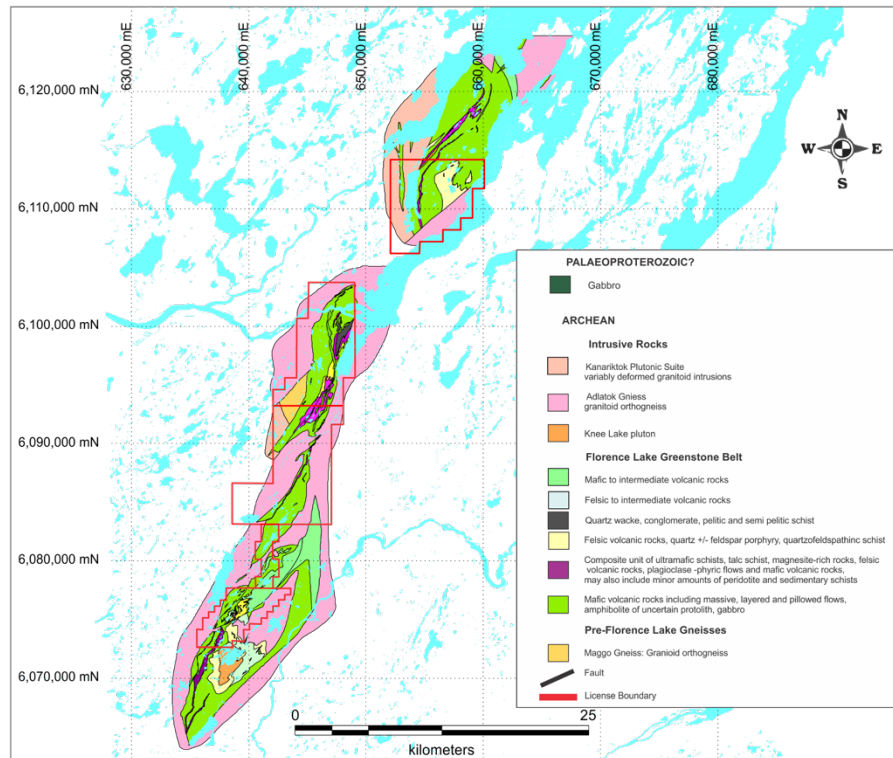
- Covers large portion of underexplored Florence Lake greenstone belt
- 3 years of exploration has outlined a three kilometre long mineralized trend of gold in rock and soil samples
- East end of property on tidewater southeast of Hopedale
- 30km southwest of community of Hopedale
- Daily air service from Happy Valley-Goose Bay
- Target: Greenstone hosted orogenic gold





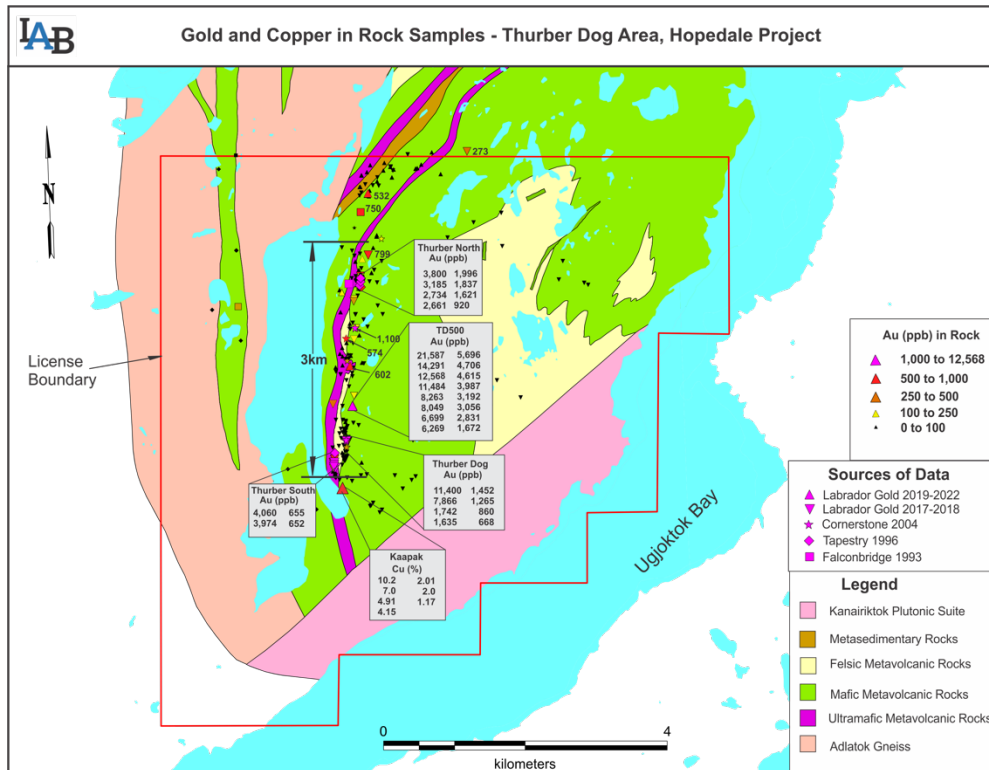
# FLORENCE LAKE GREENSTONE BELT

- Licenses cover 43 kilometres of the Florence Lake Greenstone Belt
- Underexplored for Gold
- Greenstone Belts worldwide known to be prolific hosts of gold
- Copper and Nickel potential in addition to gold



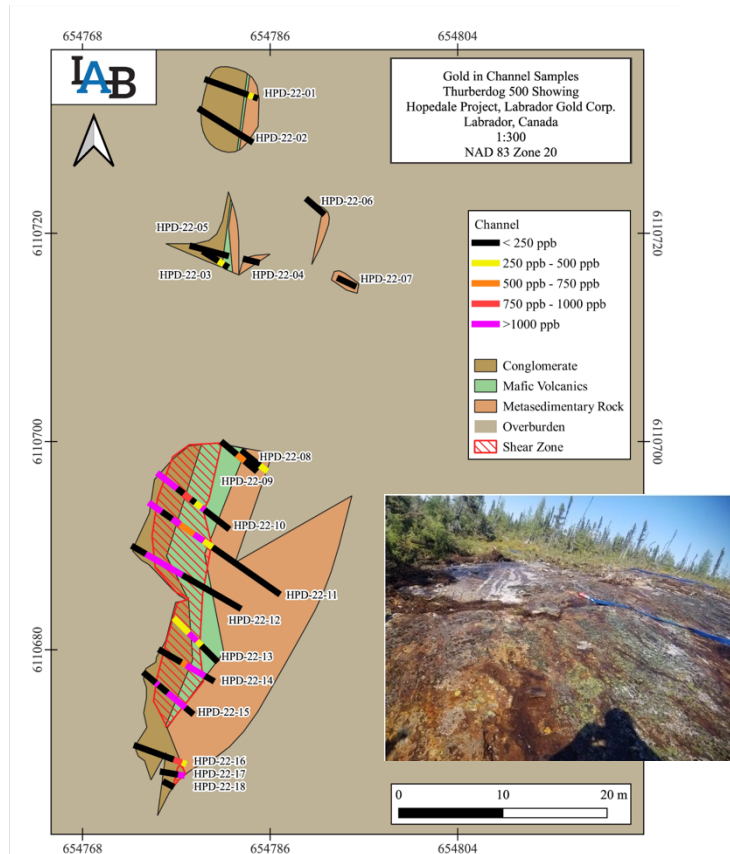
# THURBER DOG

- 3km long strike length of gold mineralization in rock and soil
- 4 significant gold occurrences
  - Thurber North up to 3.8 g/t Au
  - TD500 up to 21.59 g/t Au
  - Thurber Dog up to 11.4 g/t Au
  - Thurber South up to 4.1 g/t Au
- Significant copper- silver occurrence
  - 1.08 to 10.2% Cu
  - 0.2 to 9.2 g/t Ag



# TD 500 CHANNEL SAMPLING

Channel ID	from (m)	to (m)	width (m)	Au(g/t)
HPD-22-10	3.03	8.2	5.17	2.91
including	6.37	8.2	1.83	7.21
HPD-22-11	7.92	14.8	6.88	2.35
including	8.96	10.08	1.12	3.42
and	11.73	12.65	0.92	4.1
and	13.87	14.8	0.93	7.56
HPD-22-12	6.5	11.54	5.04	4.23
including	6.6	9.9	3.3	6.08
including	7.87	8.95	1.08	7.74
HPD-22-13	2.86	3.94	1.08	1.49
HPD-22-14	1.05	3.12	2.07	2.93
HPD-22-15	1.02	5.72	4.7	1.59
including	1.02	3.25	2.23	3.05
including	2.01	3.25	1.24	4.21
HPD-22-17	0	0.65	0.65	8.14



# KAPAAK CHANNEL SAMPLING

Channel ID	from (m)	to (m)	width (m)	Cu (%)
HPD-22-20	0.94	1.70	0.76	3.31
HPD-22-21	0.00	0.60	0.60	2.40
HPD-22-23	0.00	0.60	0.60	1.08
HPD-22-24	0.00	1.50	1.50	1.09
including	0.50	1.50	1.00	1.55
HPD-22-25	0.00	1.19	1.19	1.14
including	0.00	0.81	0.81	1.48
and	0.48	0.81	0.33	1.59

