



GOLDEN OPPORTUNITY IN NEWFOUNDLAND & LABRADOR

March 2022

TSX-V: LAB

FNR: 2N6

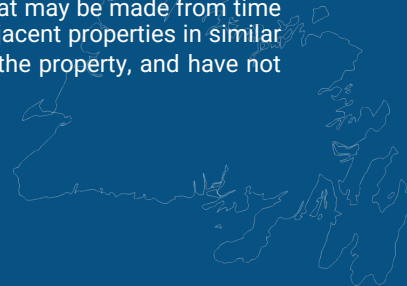
OTCQX: NKOSF



DISCLAIMER

Statements contained in this presentation that are not historical facts may be forward-looking statements within the meaning of the US Private Securities Litigation Reform Act of 1995 and forward looking information under similar Canadian legislation (collectively, "Forward Looking Information"). Forward Looking Information includes, but is not limited to, statements regarding the Company's strategic plans, property search and evaluation plans, estimated levels of mineral reserves, mineral resources and expenditures, success of exploration activities, and acquisition targets and commitments. Forward Looking Information is based on information currently available to the Company and the Company provides no assurance that actual results will meet management's expectations. In certain cases, Forward Looking Information may be identified by such terms as "anticipates", "believes", "could", "estimates", "expects", "may", "shall", "will", or "would", and is based on certain factors and assumptions regarding, among other things, the estimation of mineral resources, the realization of resource estimates, the timing and amount of future exploration and development expenditures, the availability of necessary financing and materials to continue to explore and develop properties, the receipt of necessary regulatory approvals, and assumptions with respect to currency fluctuations, environmental risks, title disputes or claims, and other similar matters. While the Company considers these assumptions to be reasonable based on information currently available to it, they may prove to be incorrect. Forward Looking Information involves known and unknown risks, uncertainties and other factors which may cause the actual results, performance or achievements of the Company to be materially different from any future results, performance or achievements expressed or implied by the Forward Looking Information. Such factors include risks inherent in the exploration and development of mineral deposits, risks relating to variations in mineral resources, grade or recovery rates resulting from current exploration and development activities, risks relating to changes in metal prices and the worldwide demand for and supply of metals, risks related to increased competition in the mining industry generally, risks related to current global financial conditions, uncertainties inherent in the estimation of mineral resources, access and supply risks, reliance on key personnel, operational risks inherent in the conduct of mining activities, risk of delays or increased costs during the development process and relating to the acquisition of licenses and permits, regulatory risks, risks related to disputes concerning property titles and interest, and environmental risks. This list is not exhaustive of the factors that may affect any of the Company's Forward Looking Information. These and other factors should be considered carefully and readers should not place undue reliance on the Company's Forward Looking Information. The Company does not undertake to update any Forward Looking Information or statements that may be made from time to time by the Company or on its behalf, except in accordance with applicable securities laws. Note that mineralization on adjacent properties in similar rocks, and assays based on historical work in surface sampling and drilling, are not representative of the mineralization on the property, and have not been verified and should not be relied upon.

The technical content of this presentation has been prepared by Roger Moss, Ph.D., P.Geo. the company's qualified person.





LABRADOR GOLD – IN THE HEART OF A NEW GOLD CAMP



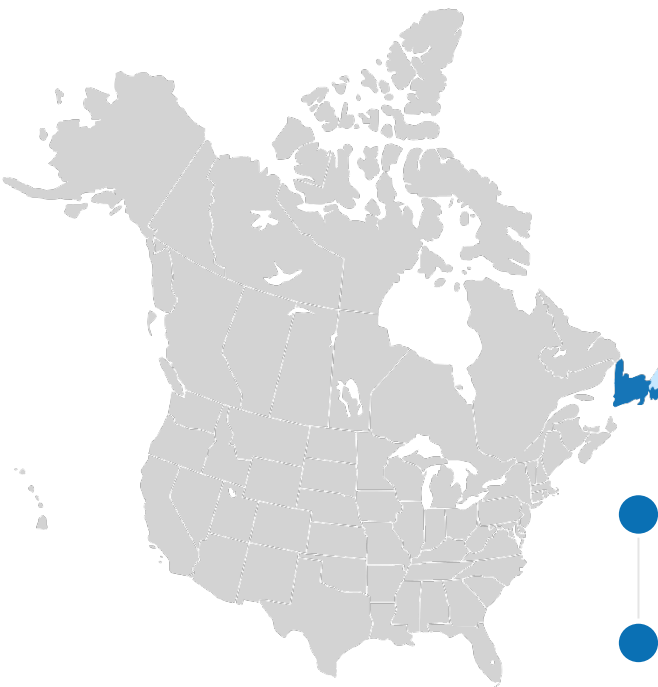
Flagship Kingsway gold project located in the Gander Gold District



Politically stable jurisdiction supportive of mineral exploration



Experienced exploration team with success in finding and advancing gold deposits (>17Moz)



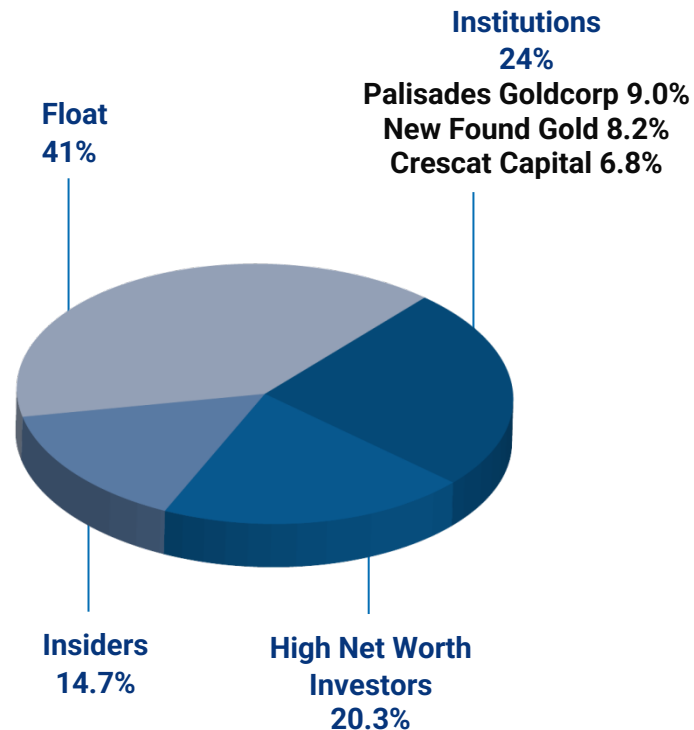
Ongoing 100,000m drill program at the Kingsway Quartz Vein Corridor



Strong cash position –C\$30M (no debt)

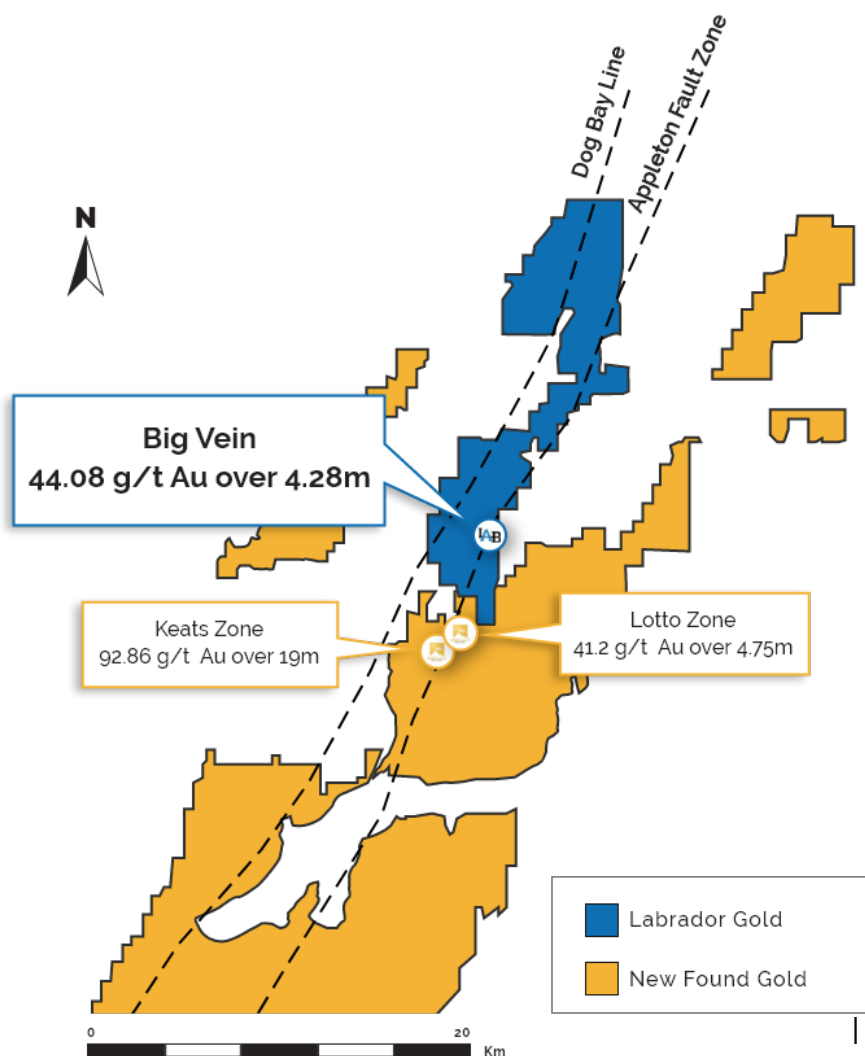
SHARE STRUCTURE

Ticker(s)	TSX-V: LAB FSE: 2N6 OTC: NKOSF
Share Price – March 4th	\$0.87
Market Capitalization	~\$133.9 million
Issued and Outstanding Shares	153.9M
Warrants	40.7M
Options	6.9M
Fully Diluted	201.3M
Cash	~\$30M
Insider Ownership:	14.7%
Eric Sprott	12.1%
Management	2.6%



Kingsway Property

- Consists of three Licenses covering 77 square kilometers
- Claim blocks cover approximately 22 kilometres of strike length of two crustal scale faults, the Dog Bay Line and the Appleton Fault zone
- Excellent infrastructure - 18km from Gander, road accessible, nearby electricity and plentiful water
- **Target:** High grade epizonal gold associated with major crustal structures and associated faults



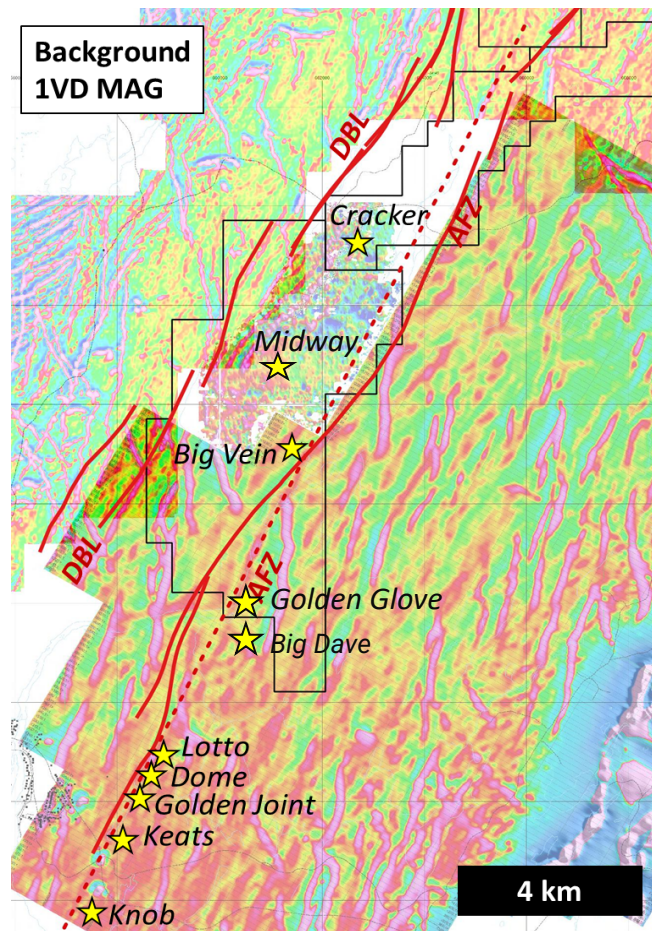
LABRADOR GOLD – A GOLDEN OPPORTUNITY





Primary Structure

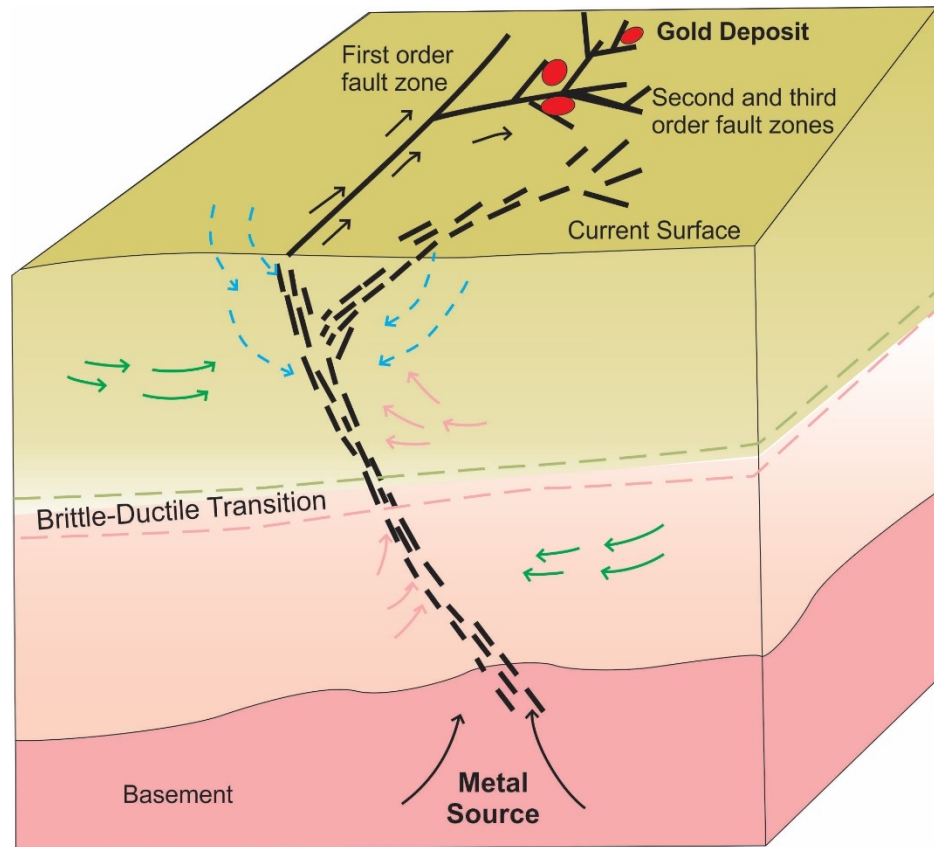
- NE-trending Appleton Fault Zone (AFZ) and Dog Bay Line (DBL)
- Numerous gold occurrences occur along the Appleton fault over more than 9km, with lots more to explore.



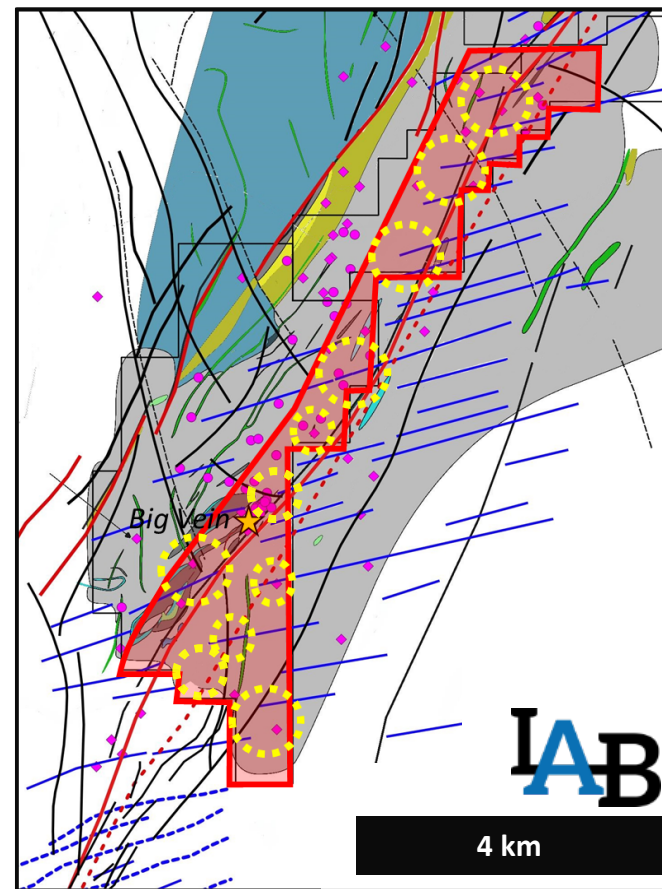
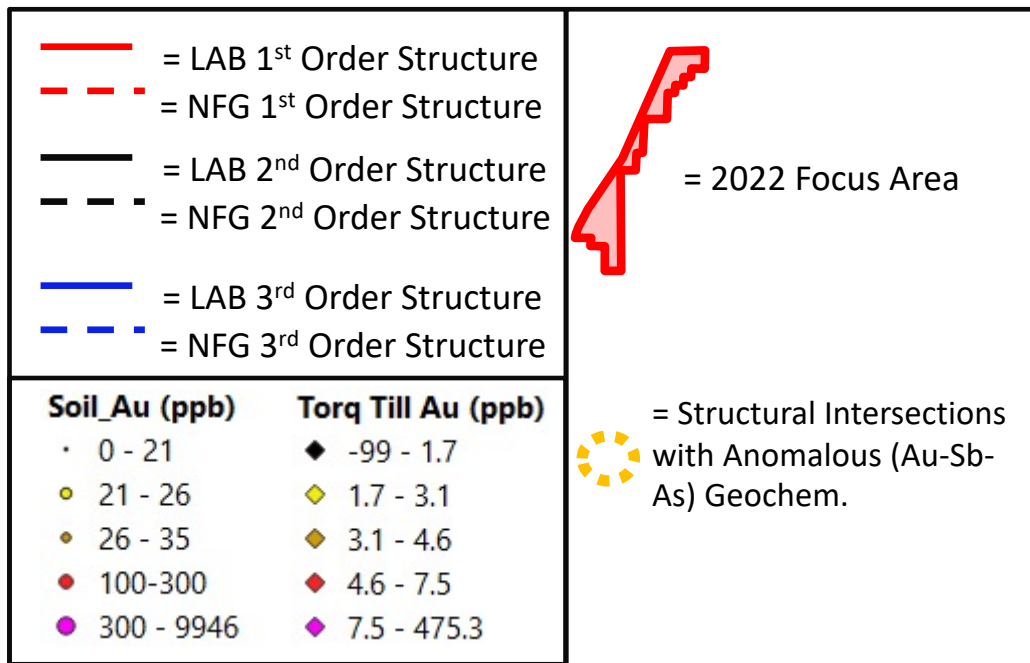


KINGSWAY STRUCTURES – LOCALIZE GOLD DEPOSITION

- Major structures are important for localizing gold deposition
- Hot water carries gold in solution up major structures like the Appleton Fault Zone
- This gold in solution migrates out through smaller second and third order structures to the sites of eventual deposition

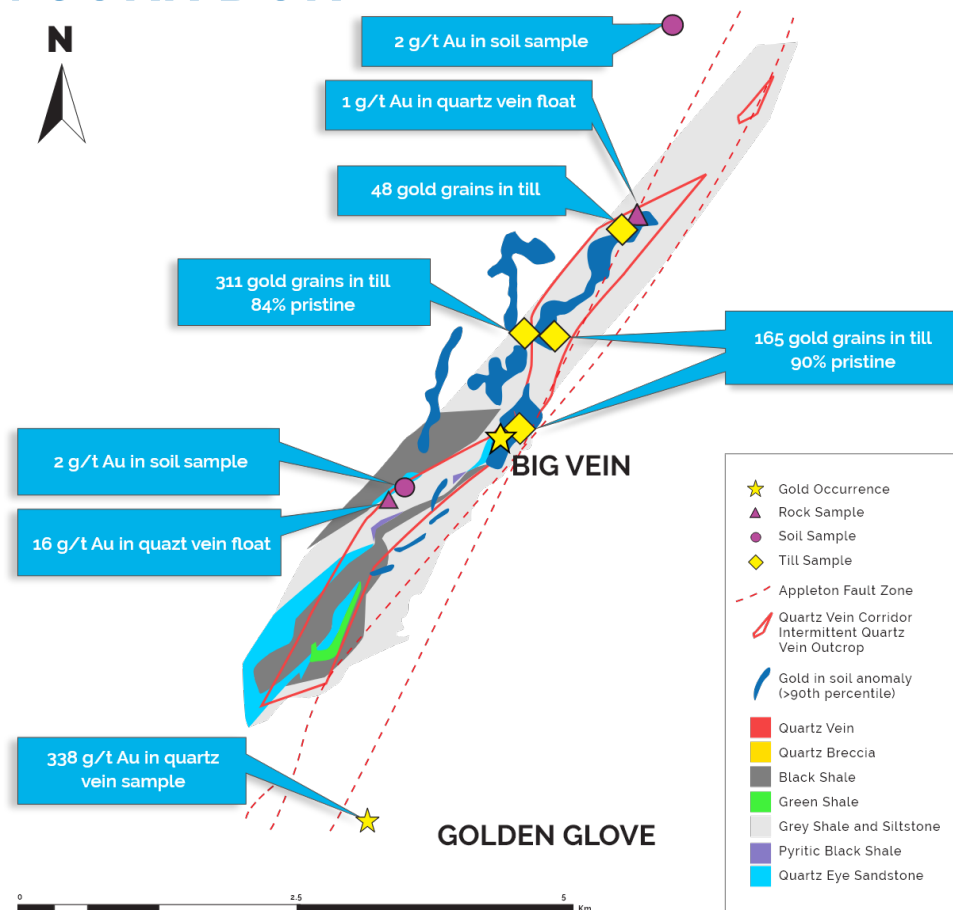


2022 KEY EXPLORATION AREAS



KINGSWAY – QUARTZ VEIN CORRIDOR

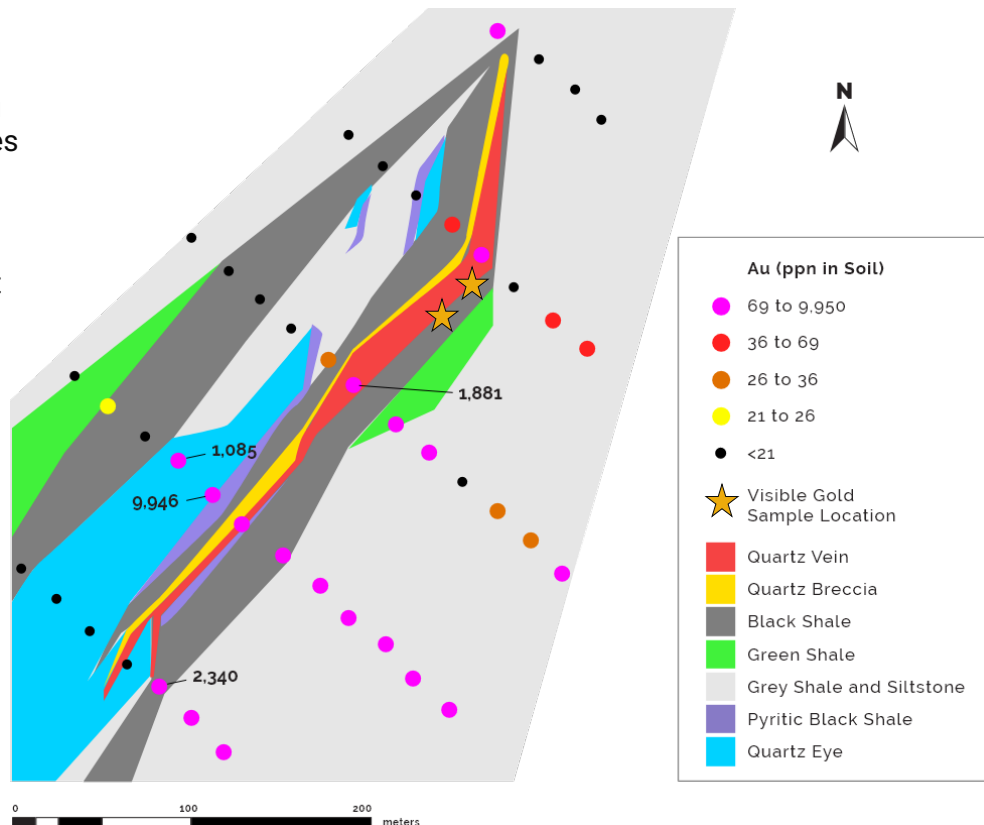
- **7.5 km+ northeast-southwest trending corridor** of intermittent quartz vein outcrop
- Adjacent to the Appleton Fault Zone
- Includes Big Vein and visible gold occurrences
- Coincident gold in soil anomalies to the northeast and southwest of Big Vein
- Till sample with 165 mostly pristine gold grains indicating nearby source found 750m NE of Big Vein
- 16g/t Au quartz vein boulder sample 1.2km SW (up ice) of Big Vein
- Similar geology to gold occurrences elsewhere in the district



KINGSWAY – VISIBLE GOLD DISCOVERY

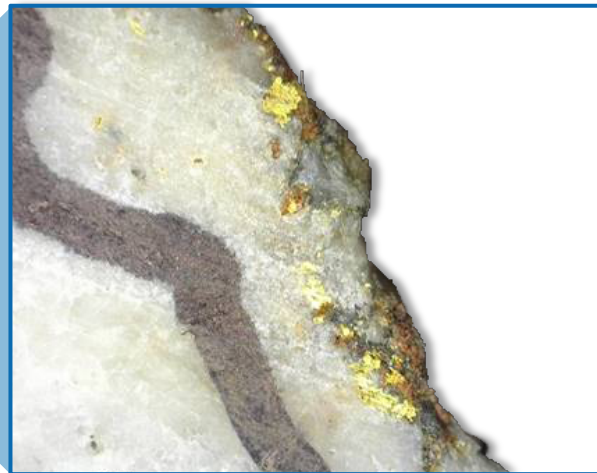
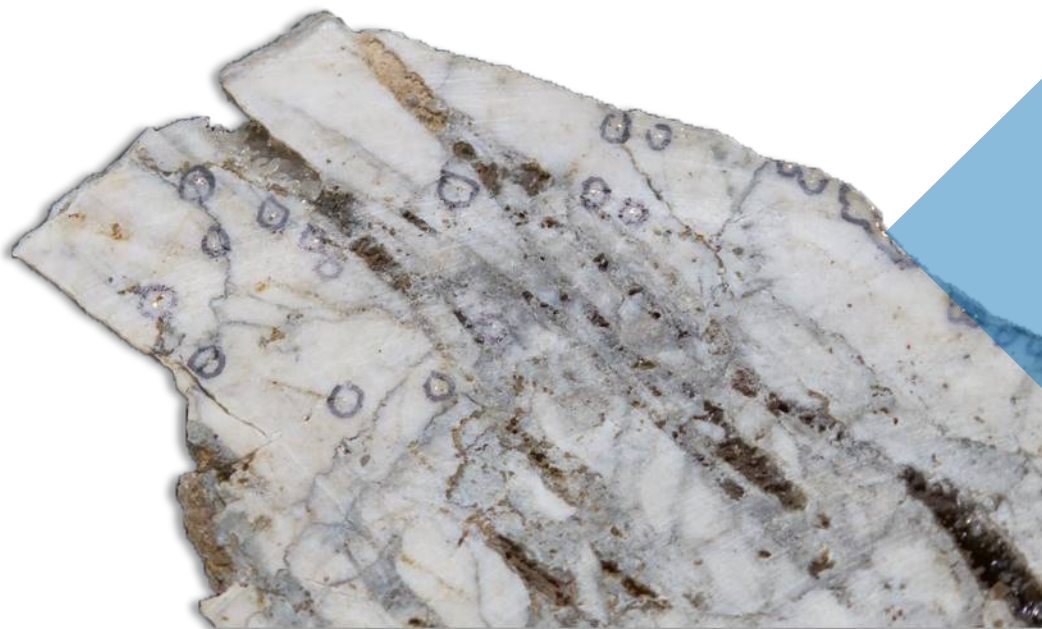
- Five occurrences of visible gold found in quartz vein
- Up to 9,946 ppb gold in soil samples over 300m along strike to southwest (up ice) of visible gold occurrences
- Quartz vein (Big Vein) traced over 400m at surface
- Big Vein occurs within the larger northeast-southwest trending quartz vein corridor

Big Vein
Discovery Outcrop





KINGSWAY – BIG VEIN VISIBLE GOLD DISCOVERY



Assayed 1,065 g/t Au
Many characteristics of epizonal
style gold mineralization

KINGSWAY – GOLDEN GLOVE DISCOVERY

Sample #	Sample Type	Sample Type	Rock Type	Au (g/t)
709307	Outcrop	Float	Quartz vein	2.16
709253	Outcrop	Grab	Quartz vein with visible gold	338.08
709252	Outcrop	Grab	Quartz vein with visible gold	194.28
709251	Outcrop	Grab	Quartz vein with visible gold	193.69
709010	Outcrop	Grab	Quartz vein with py, apy and cpy	6.34
709009	Outcrop	Grab	Quartz vein with py, apy and cpy	83.61
555963	Outcrop	Grab	Quartz Vein with py	2.99



GOLDEN GLOVE – BIG VEIN COMPARISON

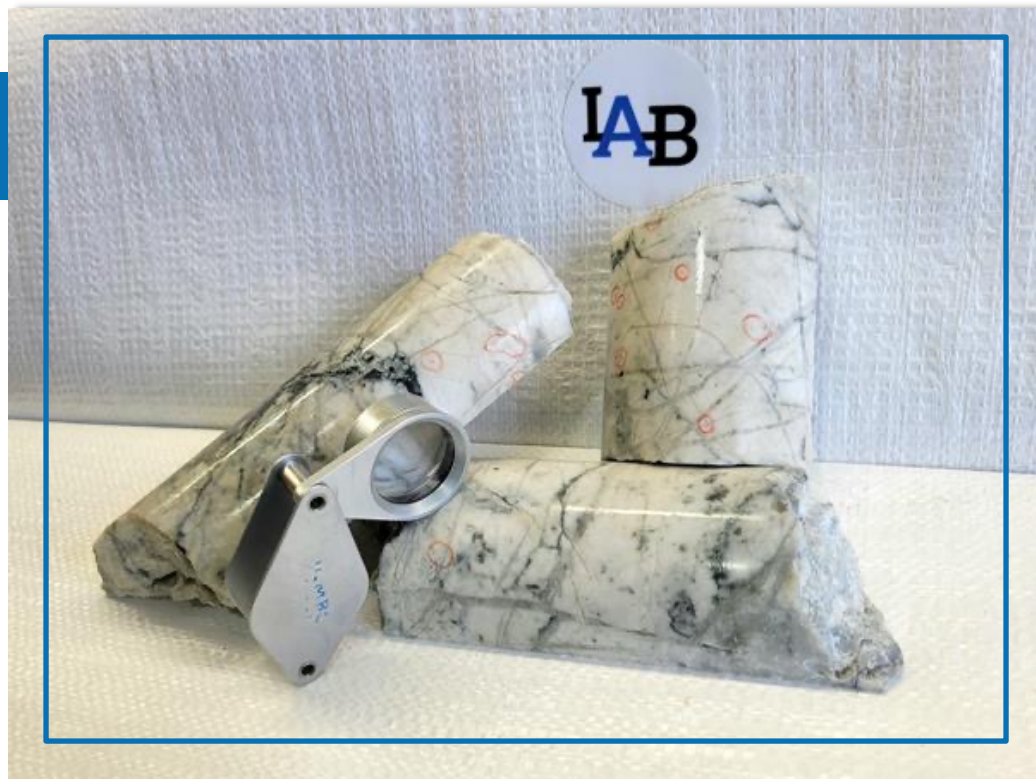
Golden Glove - Grab	Big Vein - Grab	Big Vein - Drill
Au (g/t)	Au (g/t)	Au (g/t)
338	1,065	276 g/t over 0.5m
194	185	160 g/t over 0.55m
194	66	128 g/t over 1.12m
84	38	96 g/t over 1.03m

INITIAL DRILL RESULTS

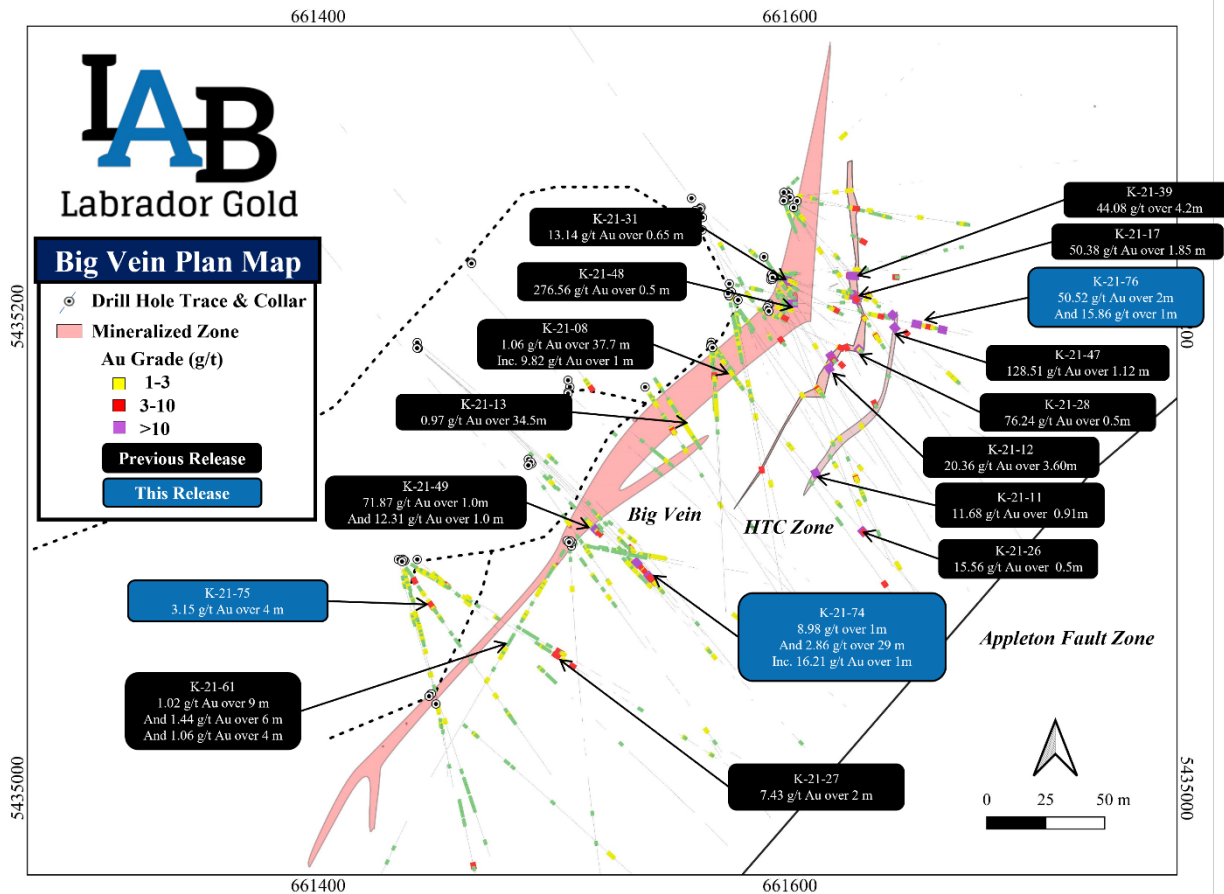
Visible gold grains found in drill holes at both Big Vein and HTC Zones

Assay highlights include:

- **44.08g/t Au over 4.28m(188.7 g x m)**
(shown in images to the right)
- **128.51 g/t Au over 1.12m (143.9 g x m)**
- **50.52 g/t Au over 2m (101.04 g x m)**
- **20.6g/t Au over 3.6m (74.2 g x m)**
- **50.38g/t Au over 1.85m (93.2 g x m)**
- **276.56 g/t Au over 0.5m (138.3 g x m)**

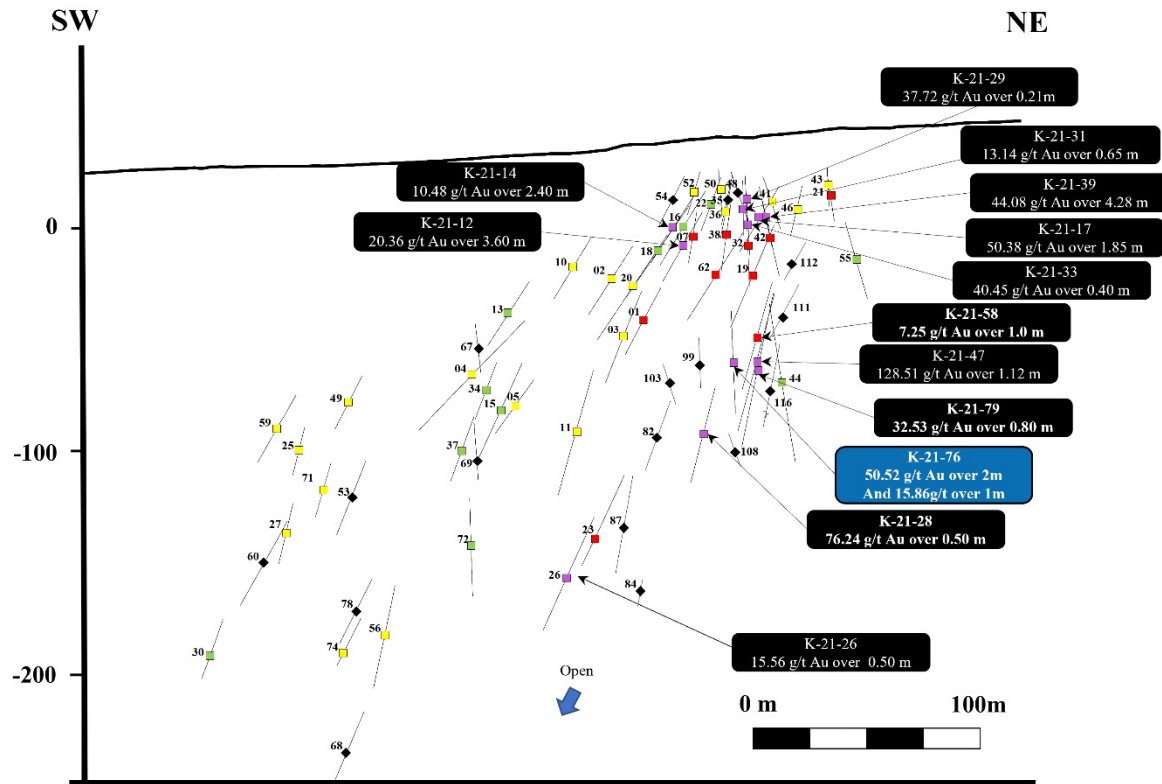


KINGSWAY – BIG VEIN PLAN VIEW MAP



KINGSWAY – LONG SECTION – HTC ZONE

LAB
Labrador Gold



KINGSWAY – GOLD MINERALIZATION INDICATORS

Black Shale Fault: Black shale indicates the proximity to the gold mineralization zone.



Pathfinder Minerals: Indicator minerals such as Antimony (Sb), Arsenopyrite (As), Chalcopyrite and Pyrite seen mostly in quartz vein.



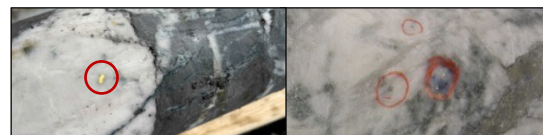
Alteration: Intense sericitic and pervasive chloritic alteration associated with the host rock (shale), leading to the veining.



Structures & Textures: Structures associated with the quartz vein such as stylolites, vugs and the change in bedding.

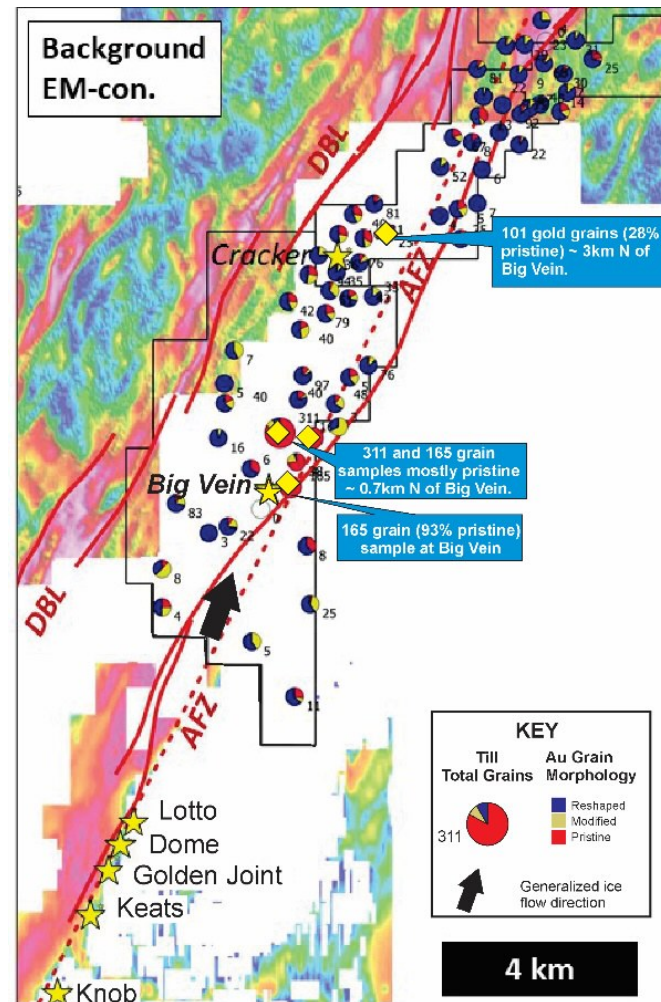
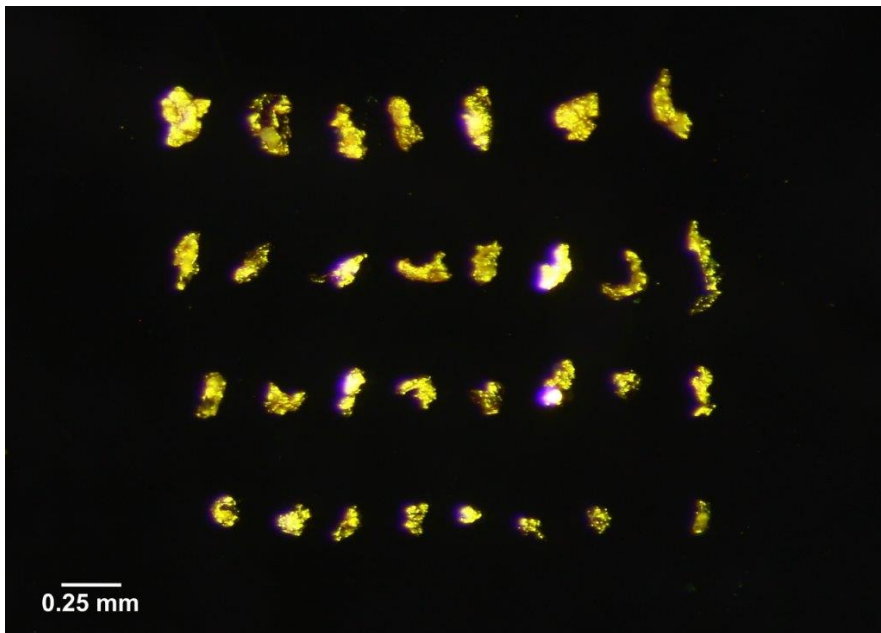


Visible Gold (VG): Mostly associated with quartz veins, may appear fine/coarser grained or in banded form following stylolitic structures.



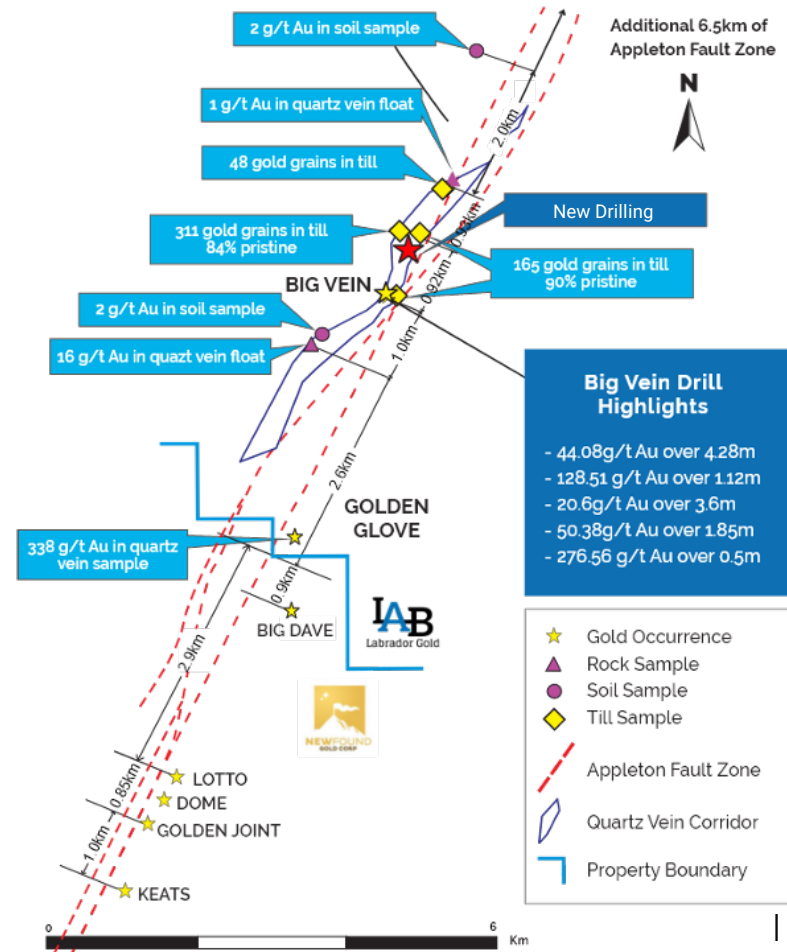


GOLD GRAINS IN TILL



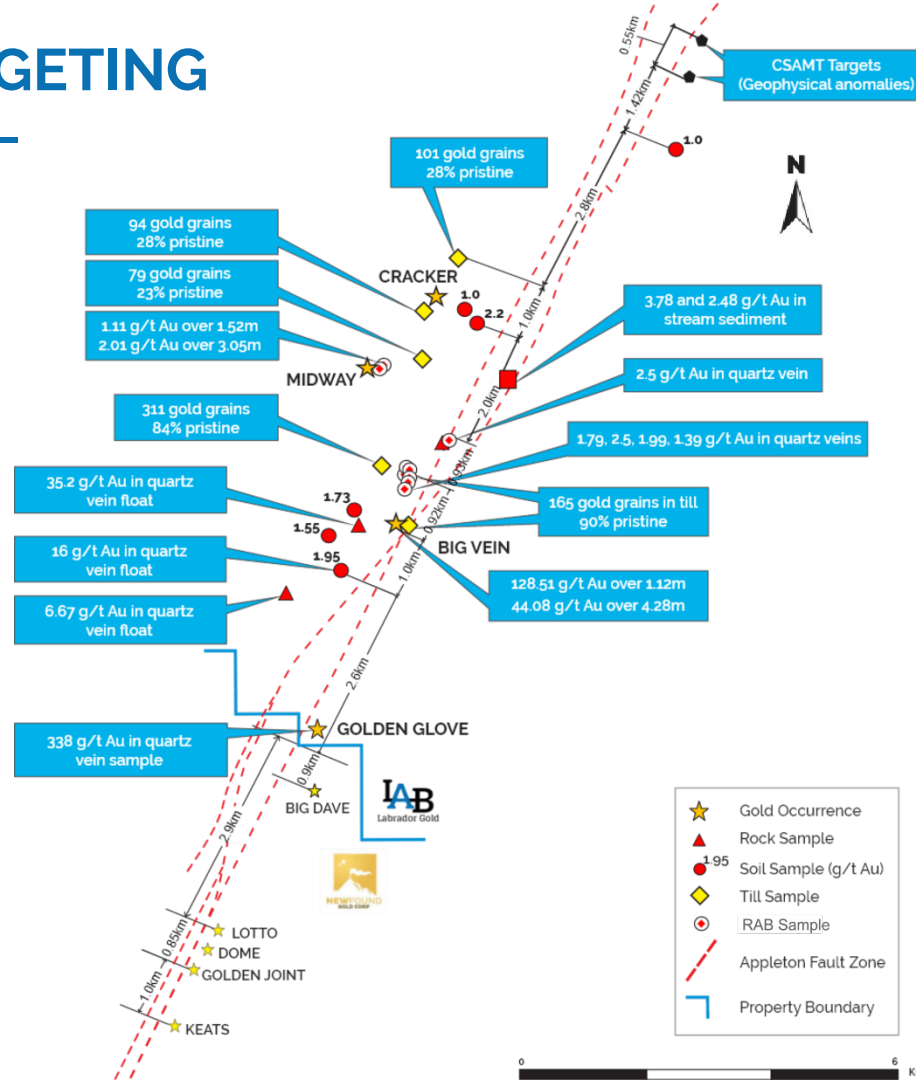
APPLETON FAULT – STRING OF PEARLS

- The northeast – southwest trending Appleton Fault Zone includes over 16km of highly prospective epizonal gold targets between Newfound Gold's Keat's discovery (see southwest corner of map) to the North-eastern limit of Quartz Vein Corridor at Labrador Gold's Kingsway Project.
- Labrador Gold is aggressively exploring the entire 12km length along strike to the southwest and northeast of Big Vein to define further targets.
- Latest Discovery** (September 2021)– Golden Glove: Rock chip assays of **338.08 g/t Au**, **194.28 g/t**, **193.69 g/t** and **83.61 g/t Au** confirm the presence of high-grade epizonal gold in a second location on the Kingsway property.



APPLETON FAULT – TARGETING

- Numerous gold anomalies found along the Appleton Fault Zone.
- Many of these anomalies constitute viable drill targets.
- Ongoing field work continues to generate more drill targets.



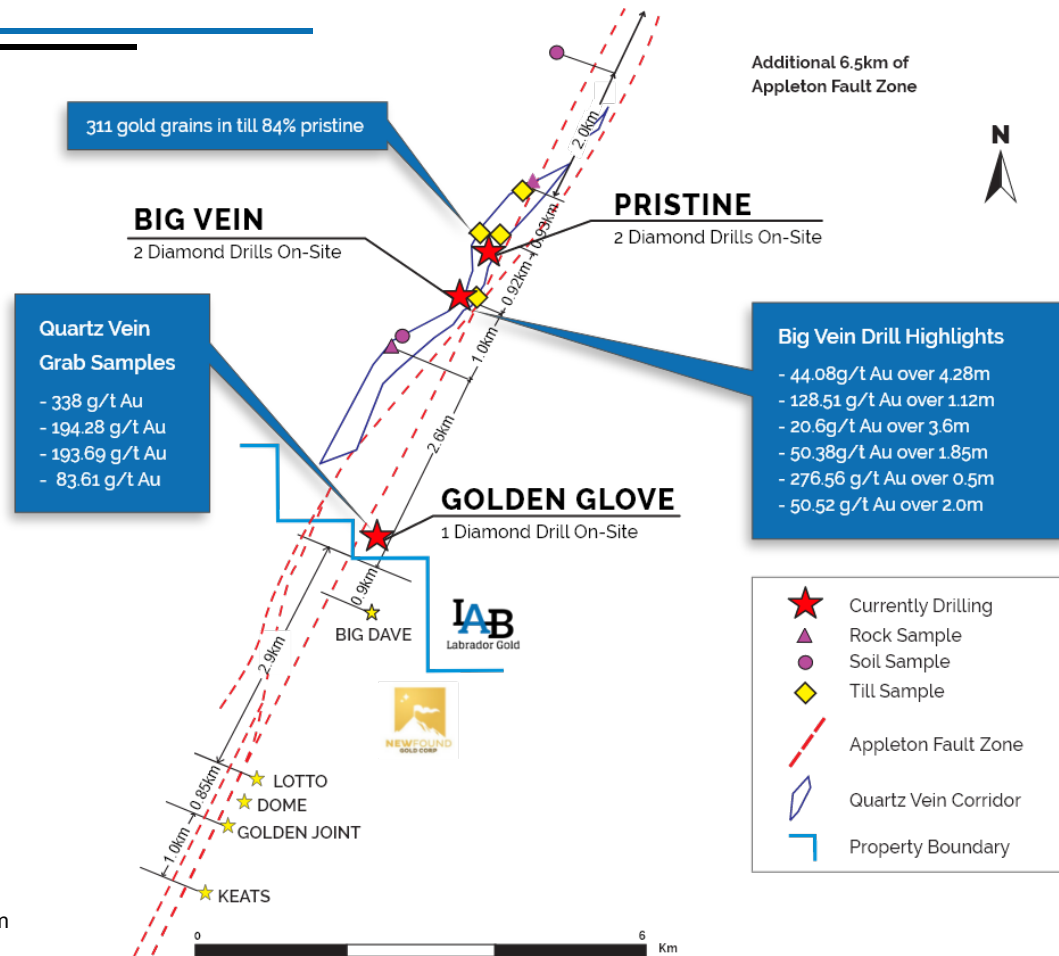
APPLETON FAULT – LABGOLD DRILLING

Labrador Gold is currently drilling 3 high priority targets along the Appleton Fault Zone

Big Vein
- 2 drill rigs

Pristine
- 2 drill rigs

Golden Glove
- 1 drill rigs





KEY TAKEAWAYS

- Tier 1 Jurisdiction
- Fully funded ongoing 100,000 metre drill program
- Two discoveries made and a significant amount of work completed in just 18 months
- Structures like the Appleton Fault Zone are important for localizing gold mineralization
- Many more gold occurrences/anomalies along the Appleton Fault Zone to be followed up to generate drill targets
- Discoveries can still be made by prospecting





ACKNOWLEDGEMENTS

Newfoundland and Labrador Ministry of Natural Resources' Junior Exploration Assistance (JEA) Program for its financial support for exploration of the Kingsway property.



TSX-V: LAB | www.labradorgold.com



CONTACT US



Roger Moss, President and CEO



Phone: +1-416-704-8291



E-mail: rmoss@labradorgold.com



Website: www.labradorgold.com



Twitter: @LabGoldCorp

TSX-V: LAB

FNR: 2N6

OTCQX: NKOSF